

**ABCG1 Antibody**  
Rabbit mAb  
Catalog # AP90410

## Specification

---

### ABCG1 Antibody - Product Information

Application	WB, IHC, ICC
Primary Accession	<a href="#">P45844</a>
Reactivity	Rat
Clonality	Monoclonal
<b>Other Names</b>	
ATP-binding cassette transporter 8; White protein homolog; ABC8; WHT1; ABCG1; ABC transporter 8; WHITE1;	
Isotype	Rabbit IgG
Host	Rabbit
Calculated MW	75592 Da

### ABCG1 Antibody - Additional Information

Purification	<b>Affinity-chromatography</b>
Immunogen	<b>A synthesized peptide derived from human ABCG1</b>
Description	<b>Functions to regulate cholesterol and phospholipid transport in macrophages. ABCG1 is highly expressed in several tissues, including brain, spleen, lung and placenta, and has been localized to the cell surface and intracellular compartments of cholesterol-laden macrophages.</b>
Storage Condition and Buffer	<b>Rabbit IgG in phosphate buffered saline , pH 7.4, 150mM NaCl, 0.02% sodium azide and 50% glycerol. Store at +4°C short term. Store at -20°C long term. Avoid freeze / thaw cycle.</b>

### ABCG1 Antibody - Protein Information

**Name** ABCG1 ([HGNC:73](#))

**Synonyms** ABC8, WHT1

#### Function

Catalyzes the efflux of phospholipids such as sphingomyelin, cholesterol and its oxygenated derivatives like 7beta- hydroxycholesterol and this transport is coupled to hydrolysis of ATP (PubMed: [17408620](http://www.uniprot.org/citations/17408620), PubMed: [24576892](http://www.uniprot.org/citations/24576892)). The lipid efflux is ALB-dependent (PubMed: [16702602](http://www.uniprot.org/citations/16702602)). Is an active component of the macrophage lipid export

complex. Could also be involved in intracellular lipid transport processes. The role in cellular lipid homeostasis may not be limited to macrophages. Prevents cell death by transporting cytotoxic 7beta- hydroxycholesterol (PubMed:<a href="http://www.uniprot.org/citations/17408620" target="\_blank">17408620</a>).

#### Cellular Location

Endoplasmic reticulum membrane; Multi-pass membrane protein. Golgi apparatus membrane; Multi-pass membrane protein. Cell membrane Note=Predominantly localized in the intracellular compartments mainly associated with the endoplasmic reticulum (ER) and Golgi membranes

#### Tissue Location

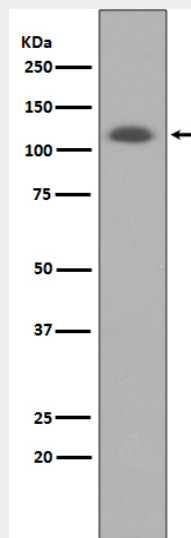
Expressed in several tissues. Expressed in macrophages; expression is increased in macrophages from patients with Tangier disease.

### ABCG1 Antibody - Protocols

Provided below are standard protocols that you may find useful for product applications.

- [Western Blot](#)
- [Blocking Peptides](#)
- [Dot Blot](#)
- [Immunohistochemistry](#)
- [Immunofluorescence](#)
- [Immunoprecipitation](#)
- [Flow Cytometry](#)
- [Cell Culture](#)

### ABCG1 Antibody - Images



Western blot analysis of ABCG1 expression in HUVEC cell lysate.