

Bad Antibody
Rabbit mAb
Catalog # AP90405

Specification

Bad Antibody - Product Information

Application **WB, IHC, FC, ICC, IP**
Primary Accession **[O92934](#)**
Reactivity **Rat**
Clonality **Monoclonal**

Other Names

BAD; BBC6; BCL2L8; Bcl- XL/Bcl-2 associated death promoter; Bcl-2 binding component 6;
Bcl-2-like 8 protein; Bcl-xL/Bcl-2 associated death promoter;

Isotype **Rabbit IgG**
Host **Rabbit**
Calculated MW **18392 Da**

Bad Antibody - Additional Information

Purification **Affinity-chromatography**
Immunogen **A synthesized peptide derived from human Bad**

Description **Promotes cell death. Successfully competes for the binding to Bcl-X(L), Bcl-2 and Bcl-W, thereby affecting the level of heterodimerization of these proteins with BAX. Can reverse the death repressor activity of Bcl-X(L), but not that of Bcl-2 (By similarity). Appears to act as a link between growth factor receptor signaling and the apoptotic pathways.**

Storage Condition and Buffer **Rabbit IgG in phosphate buffered saline , pH 7.4, 150mM NaCl, 0.02% sodium azide and 50% glycerol. Store at +4°C short term. Store at -20°C long term. Avoid freeze / thaw cycle.**

Bad Antibody - Protein Information

Name BAD

Synonyms BBC6, BCL2L8

Function

Promotes cell death. Successfully competes for the binding to Bcl-X(L), Bcl-2 and Bcl-W, thereby affecting the level of heterodimerization of these proteins with BAX. Can reverse the death repressor activity of Bcl-X(L), but not that of Bcl-2 (By similarity). Appears to act as a link between growth factor receptor signaling and the apoptotic pathways.

Cellular Location

Mitochondrion outer membrane. Cytoplasm {ECO:0000250|UniProtKB:Q61337}. Note=Colocalizes with HIF3A in the cytoplasm (By similarity). Upon phosphorylation, locates to the cytoplasm. {ECO:0000250|UniProtKB:Q61337}

Tissue Location

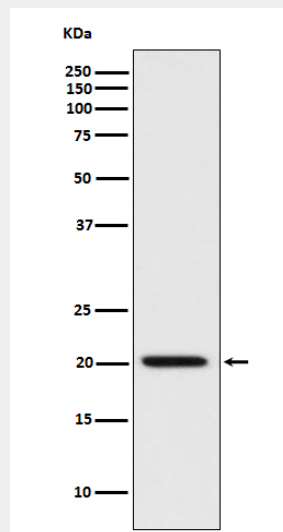
Expressed in a wide variety of tissues.

Bad Antibody - Protocols

Provided below are standard protocols that you may find useful for product applications.

- [Western Blot](#)
- [Blocking Peptides](#)
- [Dot Blot](#)
- [Immunohistochemistry](#)
- [Immunofluorescence](#)
- [Immunoprecipitation](#)
- [Flow Cytometry](#)
- [Cell Culture](#)

Bad Antibody - Images



Western blot analysis of BAD expression in HeLa cell lysate.