

**p16 INK Antibody**  
Rabbit mAb  
Catalog # AP90396

## Specification

---

### p16 INK Antibody - Product Information

Application	WB, IHC, FC, ICC, IP
Primary Accession	<a href="#">P42771</a>
Clonality	Monoclonal
<b>Other Names</b>	
CDKN2A; CDKN2; MTS1; isoforms 1/2/3; Cyclin-dependent kinase 4 inhibitor A; CDK4I; P16INK4; p16INK4a; Multiple tumor suppressor 1;	
Isotype	Rabbit IgG
Host	Rabbit
Calculated MW	16533 Da

### p16 INK Antibody - Additional Information

Purification	Affinity-chromatography
Immunogen	A synthesized peptide derived from human p16 INK
Description	p16-INK4A a cell-cycle regulatory protein that interacts with CDK4 and CDK6, inhibiting their ability to interact with cyclins D. Inhibits the phosphorylation of the retinoblastoma protein by CDK4 or CDK6. Four alternatively spliced isoforms have been reported.
Storage Condition and Buffer	Rabbit IgG in phosphate buffered saline , pH 7.4, 150mM NaCl, 0.02% sodium azide and 50% glycerol. Store at +4°C short term. Store at -20°C long term. Avoid freeze / thaw cycle.

### p16 INK Antibody - Protein Information

**Name** CDKN2A ([HGNC:1787](#))

**Synonyms** CDKN2, MTS1

#### Function

Acts as a negative regulator of the proliferation of normal cells by interacting strongly with CDK4 and CDK6. This inhibits their ability to interact with cyclins D and to phosphorylate the retinoblastoma protein.

#### Cellular Location

Cytoplasm. Nucleus

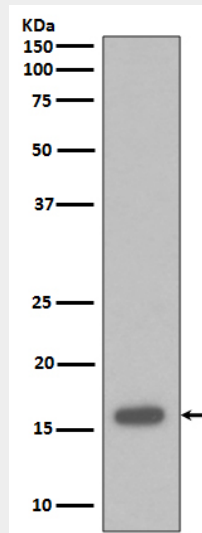
**Tissue Location**

Widely expressed but not detected in brain or skeletal muscle. Isoform 3 is pancreas-specific

**p16 INK Antibody - Protocols**

Provided below are standard protocols that you may find useful for product applications.

- [Western Blot](#)
- [Blocking Peptides](#)
- [Dot Blot](#)
- [Immunohistochemistry](#)
- [Immunofluorescence](#)
- [Immunoprecipitation](#)
- [Flow Cytometry](#)
- [Cell Culture](#)

**p16 INK Antibody - Images**

Western blot analysis of p16 INK expression in 293T cell lysate.