

**C Reactive Protein Antibody**  
Rabbit mAb  
Catalog # AP90391

**Specification**

---

**C Reactive Protein Antibody - Product Information**

Application	WB, IHC, IP
Primary Accession	<a href="#">P02741</a>
Clonality	Monoclonal
<b>Other Names</b>	
CRP; Pentraxin 1; PTX1; C reactive protein pentraxin related;	
Isotype	Rabbit IgG
Host	Rabbit
Calculated MW	25039 Da

**C Reactive Protein Antibody - Additional Information**

Purification	Affinity-chromatography
Immunogen	A synthesized peptide derived from human C Reactive Protein
Description	Serum CRP values are routinely measured to detect or monitor many human diseases and minor elevations of C-reactive protein are predictive of cardiovascular events in patients with coronary heart disease. CRP promotes host defense, is an efficient activator of the classical C cascade, and shown to be opsonic. The opsonic and C activation activities are responsible for the nonspecific host defense activities providing protection in the preimmune stage of acute infections.
Storage Condition and Buffer	Rabbit IgG in phosphate buffered saline , pH 7.4, 150mM NaCl, 0.02% sodium azide and 50% glycerol. Store at +4°C short term. Store at -20°C long term. Avoid freeze / thaw cycle.

**C Reactive Protein Antibody - Protein Information**

**Name** CRP

**Synonyms** PTX1

**Function**

Displays several functions associated with host defense: it promotes agglutination, bacterial capsular swelling, phagocytosis and complement fixation through its calcium-dependent binding to phosphorylcholine. Can interact with DNA and histones and may scavenge nuclear material

released from damaged circulating cells.

**Cellular Location**

Secreted.

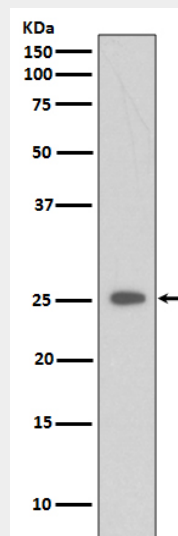
**Tissue Location**

Found in plasma.

**C Reactive Protein Antibody - Protocols**

Provided below are standard protocols that you may find useful for product applications.

- [Western Blot](#)
- [Blocking Peptides](#)
- [Dot Blot](#)
- [Immunohistochemistry](#)
- [Immunofluorescence](#)
- [Immunoprecipitation](#)
- [Flow Cytometry](#)
- [Cell Culture](#)

**C Reactive Protein Antibody - Images**

Western blot analysis of CRP expression in Etoposide treated 293 whole cell lysates.