

**B Raf Antibody**  
Rabbit mAb  
Catalog # AP90359

## Specification

---

### B Raf Antibody - Product Information

Application	WB, IHC, FC, IP
Primary Accession	<a href="#">P15056</a>
Reactivity	Rat
Clonality	Monoclonal
<b>Other Names</b>	
B-RAF; p94; NS7; B-Raf proto-oncogene serine/threonine-protein kinase; BRAF; BRAF1;	
Isotype	Rabbit IgG
Host	Rabbit
Calculated MW	84437 Da

### B Raf Antibody - Additional Information

Purification	Affinity-chromatography
Immunogen	A synthesized peptide derived from human B Raf
Description	Involved in the transduction of mitogenic signals from the cell membrane to the nucleus. May play a role in the postsynaptic responses of hippocampal neuron. Frequently mutated in thyroid cancers, skin melanomas and at lower frequency in a wide range of human cancers. An activating mutation, mimicking phosphorylation of the activation loop, is seen in 60% of malignant melanoma samples. Raf mutations are generally exclusive to Ras activating mutations.
Storage Condition and Buffer	Rabbit IgG in phosphate buffered saline , pH 7.4, 150mM NaCl, 0.02% sodium azide and 50% glycerol. Store at +4°C short term. Store at -20°C long term. Avoid freeze / thaw cycle.

### B Raf Antibody - Protein Information

**Name** BRAF ([HGNC:1097](#))

**Synonyms** BRAF1, RAFB1

#### Function

Protein kinase involved in the transduction of mitogenic signals from the cell membrane to the nucleus (Probable). Phosphorylates MAP2K1, and thereby activates the MAP kinase signal

transduction pathway (PubMed:<a href="http://www.uniprot.org/citations/21441910" target="\_blank">21441910</a>, PubMed:<a href="http://www.uniprot.org/citations/29433126" target="\_blank">29433126</a>). Phosphorylates PFKFB2 (PubMed:<a href="http://www.uniprot.org/citations/36402789" target="\_blank">36402789</a>). May play a role in the postsynaptic responses of hippocampal neurons (PubMed:<a href="http://www.uniprot.org/citations/1508179" target="\_blank">1508179</a>).

#### Cellular Location

Nucleus. Cytoplasm. Cell membrane. Note=Colocalizes with RGS14 and RAF1 in both the cytoplasm and membranes.

#### Tissue Location

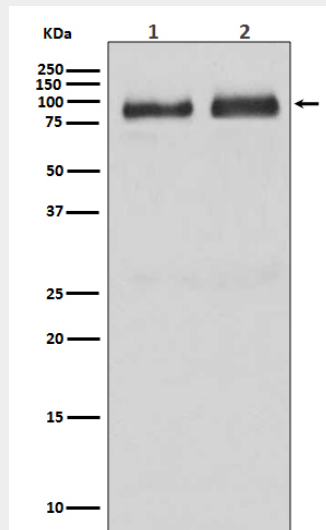
Brain and testis.

### B Raf Antibody - Protocols

Provided below are standard protocols that you may find useful for product applications.

- [Western Blot](#)
- [Blocking Peptides](#)
- [Dot Blot](#)
- [Immunohistochemistry](#)
- [Immunofluorescence](#)
- [Immunoprecipitation](#)
- [Flow Cytometry](#)
- [Cell Culture](#)

### B Raf Antibody - Images



Western blot analysis of B Raf expression in (1)Human brain lysate (2)HepG2 cell lysate.