

p16 ARC Antibody
Rabbit mAb
Catalog # AP90356

Specification

p16 ARC Antibody - Product Information

Application	WB, IHC, FC, ICC, IP
Primary Accession	O15511
Reactivity	Rat
Clonality	Monoclonal
Other Names	
p16 Arc; ARPC5; ARC16; Arp2/3 protein complex subunit p16;	
Isotype	Rabbit IgG
Host	Rabbit
Calculated MW	16320 Da

p16 ARC Antibody - Additional Information

Purification	Affinity-chromatography
Immunogen	A synthesized peptide derived from human p16 ARC
Description	Functions as component of the Arp2/3 complex which is involved in regulation of actin polymerization and together with an activating nucleation-promoting factor (NPF) mediates the formation of branched actin networks.
Storage Condition and Buffer	Rabbit IgG in phosphate buffered saline , pH 7.4, 150mM NaCl, 0.02% sodium azide and 50% glycerol. Store at +4°C short term. Store at -20°C long term. Avoid freeze / thaw cycle.

p16 ARC Antibody - Protein Information

Name ARPC5

Synonyms ARC16

Function

Component of the Arp2/3 complex, a multiprotein complex that mediates actin polymerization upon stimulation by nucleation-promoting factor (NPF) (PubMed:[9230079](http://www.uniprot.org/citations/9230079)). The Arp2/3 complex mediates the formation of branched actin networks in the cytoplasm, providing the force for cell motility (PubMed:[9230079](http://www.uniprot.org/citations/9230079)). In addition to its role in the cytoplasmic cytoskeleton, the Arp2/3 complex also promotes actin polymerization in the nucleus, thereby regulating gene transcription and repair of damaged DNA (PubMed:[29925947](http://www.uniprot.org/citations/29925947))

target="_blank">29925947). The Arp2/3 complex promotes homologous recombination (HR) repair in response to DNA damage by promoting nuclear actin polymerization, leading to drive motility of double-strand breaks (DSBs) (PubMed:29925947).

Cellular Location

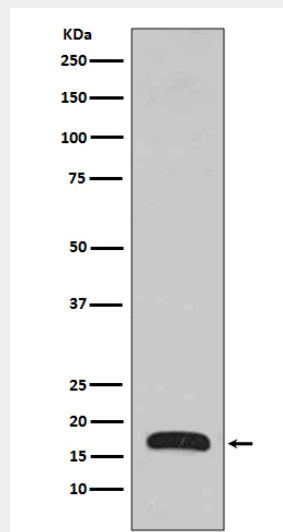
Cytoplasm, cytoskeleton. Cell projection. Nucleus

p16 ARC Antibody - Protocols

Provided below are standard protocols that you may find useful for product applications.

- [Western Blot](#)
- [Blocking Peptides](#)
- [Dot Blot](#)
- [Immunohistochemistry](#)
- [Immunofluorescence](#)
- [Immunoprecipitation](#)
- [Flow Cytometry](#)
- [Cell Culture](#)

p16 ARC Antibody - Images



Western blot analysis of p16 Arc expression in Human fetal brain lysate.