

DNAJC15 Antibody
Rabbit mAb
Catalog # AP90345

Specification

DNAJC15 Antibody - Product Information

Application	WB, IHC
Primary Accession	O9Y5T4
Reactivity	Rat
Clonality	Monoclonal
Other Names	
HSD18; MCJ; Methylation controlled J protein; DNAJC15; DNAJD1; GIG22; DJC1	
Isotype	Rabbit IgG
Host	Rabbit
Calculated MW	16383 Da

DNAJC15 Antibody - Additional Information

Purification	Affinity-chromatography
Immunogen	A synthesized peptide derived from human DNAJC15
Description	Negative regulator of the mitochondrial respiratory chain. Prevents mitochondrial hyperpolarization state and restricts mitochondrial generation of ATP (By similarity). Acts as an import component of the TIM23 translocase complex. Stimulates the ATPase activity of HSPA9.
Storage Condition and Buffer	Rabbit IgG in phosphate buffered saline , pH 7.4, 150mM NaCl, 0.02% sodium azide and 50% glycerol. Store at +4°C short term. Store at -20°C long term. Avoid freeze / thaw cycle.

DNAJC15 Antibody - Protein Information

Name DNAJC15

Synonyms DNAJD1

Function

Negative regulator of the mitochondrial respiratory chain. Prevents mitochondrial hyperpolarization state and restricts mitochondrial generation of ATP (By similarity). Acts as an import component of the TIM23 translocase complex. Stimulates the ATPase activity of HSPA9.

Cellular Location

Mitochondrion inner membrane; Single-pass membrane protein

Tissue Location

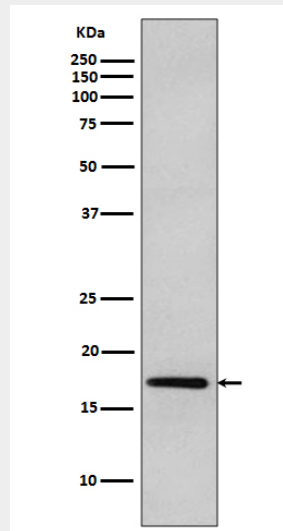
Expressed at highest levels in heart, followed by liver and kidney.

DNAJC15 Antibody - Protocols

Provided below are standard protocols that you may find useful for product applications.

- [Western Blot](#)
- [Blocking Peptides](#)
- [Dot Blot](#)
- [Immunohistochemistry](#)
- [Immunofluorescence](#)
- [Immunoprecipitation](#)
- [Flow Cytometry](#)
- [Cell Culture](#)

DNAJC15 Antibody - Images



Western blot analysis of DNAJC15 expression in MCF-7 cell lysate.