

**OR2H2 Antibody (C-term)**  
**Affinity Purified Rabbit Polyclonal Antibody (Pab)**  
**Catalog # AP9033b**

**Specification**

---

**OR2H2 Antibody (C-term) - Product Information**

Application	<b>WB, FC,E</b>
Primary Accession	<a href="#">O95918</a>
Reactivity	<b>Human</b>
Host	<b>Rabbit</b>
Clonality	<b>Polyclonal</b>
Isotype	<b>Rabbit IgG</b>
Calculated MW	<b>34763</b>
Antigen Region	<b>276-302</b>

**OR2H2 Antibody (C-term) - Additional Information**

**Gene ID** 7932

**Other Names**

Olfactory receptor 2H2, Hs6M1-12, Olfactory receptor 2H3, Olfactory receptor-like protein FAT11, OR2H2, FAT11, OLFR2, OR2H3

**Target/Specificity**

This OR2H2 antibody is generated from rabbits immunized with a KLH conjugated synthetic peptide between 276-302 amino acids from the C-terminal region of human OR2H2.

**Dilution**

WB~~1:2000

FC~~1:10~50

**Format**

Purified polyclonal antibody supplied in PBS with 0.09% (W/V) sodium azide. This antibody is purified through a protein A column, followed by peptide affinity purification.

**Storage**

Maintain refrigerated at 2-8°C for up to 2 weeks. For long term storage store at -20°C in small aliquots to prevent freeze-thaw cycles.

**Precautions**

OR2H2 Antibody (C-term) is for research use only and not for use in diagnostic or therapeutic procedures.

**OR2H2 Antibody (C-term) - Protein Information**

**Name** OR2H2

**Synonyms** FAT11, OLFR2, OR2H3

**Function** Odorant receptor.

**Cellular Location**

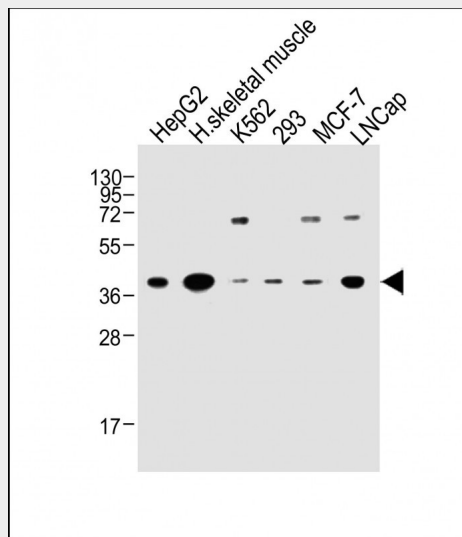
Cell membrane; Multi-pass membrane protein.

**OR2H2 Antibody (C-term) - Protocols**

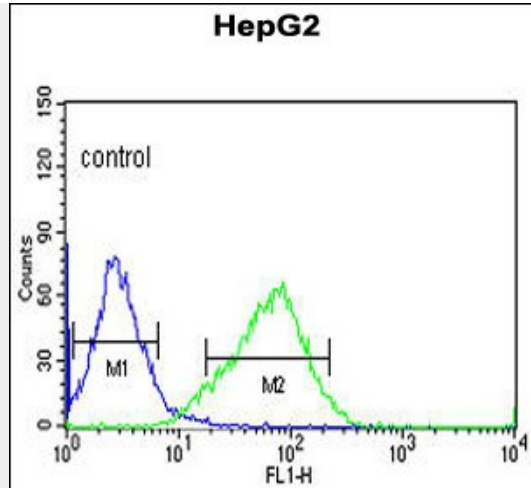
Provided below are standard protocols that you may find useful for product applications.

- [Western Blot](#)
- [Blocking Peptides](#)
- [Dot Blot](#)
- [Immunohistochemistry](#)
- [Immunofluorescence](#)
- [Immunoprecipitation](#)
- [Flow Cytometry](#)
- [Cell Culture](#)

**OR2H2 Antibody (C-term) - Images**



All lanes : Anti-OR2H2 Antibody (C-term) at 1:2000 dilution Lane 1: HepG2 whole cell lysate Lane 2: Human skeletal muscle whole tissue lysate Lane 3: K562 whole cell lysate Lane 4: 293 whole cell lysate Lane 5: MCF-7 whole cell lysate Lane 6: LNCap whole cell lysate Lysates/proteins at 20 µg per lane. Secondary Goat Anti-Rabbit IgG, (H+L), Peroxidase conjugated at 1/10000 dilution. Predicted band size : 35 kDa Blocking/Dilution buffer: 5% NFDN/TBST.



OR2H2 Antibody (C-term) (Cat. #AP9033b) flow cytometric analysis of HepG2 cells (right histogram) compared to a negative control cell (left histogram).FITC-conjugated goat-anti-rabbit secondary antibodies were used for the analysis.

#### **OR2H2 Antibody (C-term) - Background**

OR2H2 is a odorant receptor.

#### **OR2H2 Antibody (C-term) - References**

Malnic B., et.al., Proc. Natl. Acad. Sci. U.S.A. 101:2584-2589(2004).