

**WNT2 Antibody**  
Rabbit mAb  
Catalog # AP90339

## Specification

---

### WNT2 Antibody - Product Information

Application	WB
Primary Accession	<a href="#">P09544</a>
Reactivity	Rat
Clonality	Monoclonal

#### Other Names

Int 1 related protein; INT1L 1; INT1L1; IRP; IRP protein; ONCOGENE INT1 LIKE 1; Protein Wnt-2; Secreted growth factor; Wingless type MMTV integration site family member 2; WNT2;

Isotype	Rabbit IgG
Host	Rabbit
Calculated MW	40418 Da

### WNT2 Antibody - Additional Information

Purification	Affinity-chromatography
Immunogen	A synthesized peptide derived from human WNT2
Description	Products of the highly conserved Wnt gene family, including Wnt-1 through Wnt-10, play key roles in regulating cellular growth and differentiation. Wnt-1 is a cysteine-rich, secreted glycoprotein that associates with cell membranes and likely functions as a key regulator of cellular adhesion. Wnt-1, which is essential for normal development of the embryonic nervous system, contributes to hyperplasia and tumorigenic progression when improperly expressed in mammary tissue. Rabbit IgG in phosphate buffered saline , pH 7.4, 150mM NaCl, 0.02% sodium azide and 50% glycerol. Store at +4°C short term. Store at -20°C long term. Avoid freeze / thaw cycle.
Storage Condition and Buffer	

### WNT2 Antibody - Protein Information

**Name** WNT2

**Synonyms** INT1L1, IRP

#### Function

Ligand for members of the frizzled family of seven transmembrane receptors. Functions in the

canonical Wnt signaling pathway that results in activation of transcription factors of the TCF/LEF family (PubMed:<a href="http://www.uniprot.org/citations/20018874" target="\_blank">20018874</a>). Functions as a upstream regulator of FGF10 expression. Plays an important role in embryonic lung development. May contribute to embryonic brain development by regulating the proliferation of dopaminergic precursors and neurons (By similarity).

#### Cellular Location

Secreted, extracellular space, extracellular matrix. Secreted

#### Tissue Location

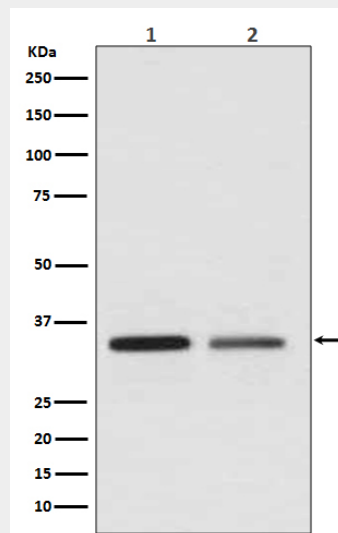
Expressed in brain in the thalamus, in fetal and adult lung and in placenta.

### WNT2 Antibody - Protocols

Provided below are standard protocols that you may find useful for product applications.

- [Western Blot](#)
- [Blocking Peptides](#)
- [Dot Blot](#)
- [Immunohistochemistry](#)
- [Immunofluorescence](#)
- [Immunoprecipitation](#)
- [Flow Cytometry](#)
- [Cell Culture](#)

### WNT2 Antibody - Images



Western blot analysis of WNT2 expression in (1) Jurkat cell lysate; (2) SKBR-3 cell lysate.