

UCLH3 Antibody
Rabbit mAb
Catalog # AP90294**Specification**

UCLH3 Antibody - Product Information

Application	WB
Primary Accession	P15374
Reactivity	Rat
Clonality	Monoclonal
Other Names	
UCH-L3; Ubiquitin thiolesterase L3; Ubiquitin carboxyl-terminal hydrolase isozyme L3;UCLH3;	
Isotype	Rabbit IgG
Host	Rabbit
Calculated MW	26183 Da

UCLH3 Antibody - Additional Information

Purification	Affinity-chromatography
Immunogen	A synthesized peptide derived from human UCLH3
Description	Deubiquitinating enzyme (DUB) that controls levels of cellular ubiquitin through processing of ubiquitin precursors and ubiquitinated proteins. Thiol protease that recognizes and hydrolyzes a peptide bond at the C-terminal glycine of either ubiquitin or NEDD8. Has a 10-fold preference for Arg and Lys at position P3", and exhibits a preference towards 'Lys-48'-linked Ubiquitin chains. Deubiquitinates ENAC in apical compartments, thereby regulating apical membrane recycling.
Storage Condition and Buffer	Rabbit IgG in phosphate buffered saline , pH 7.4, 150mM NaCl, 0.02% sodium azide and 50% glycerol. Store at +4°C short term. Store at -20°C long term. Avoid freeze / thaw cycle.

UCLH3 Antibody - Protein Information**Name** UCLH3**Function**

Deubiquitinating enzyme (DUB) that controls levels of cellular ubiquitin through processing of ubiquitin precursors and ubiquitinated proteins. Thiol protease that recognizes and hydrolyzes a peptide bond at the C-terminal glycine of either ubiquitin or NEDD8. Has a 10-fold preference for Arg and Lys at position P3", and exhibits a preference towards 'Lys-48'-linked ubiquitin chains.

Deubiquitinates ENAC in apical compartments, thereby regulating apical membrane recycling. Indirectly increases the phosphorylation of IGFIR, AKT and FOXO1 and promotes insulin-signaling and insulin-induced adipogenesis. Required for stress-response retinal, skeletal muscle and germ cell maintenance. May be involved in working memory. Can hydrolyze UBB(+1), a mutated form of ubiquitin which is not effectively degraded by the proteasome and is associated with neurodegenerative disorders.

Cellular Location

Cytoplasm.

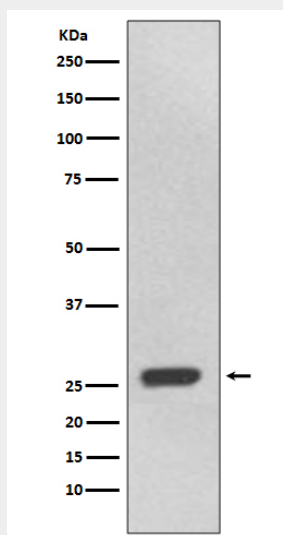
Tissue Location

Highly expressed in heart, skeletal muscle, and testis.

UCHL3 Antibody - Protocols

Provided below are standard protocols that you may find useful for product applications.

- [Western Blot](#)
- [Blocking Peptides](#)
- [Dot Blot](#)
- [Immunohistochemistry](#)
- [Immunofluorescence](#)
- [Immunoprecipitation](#)
- [Flow Cytometry](#)
- [Cell Culture](#)

UCHL3 Antibody - Images

Western blot analysis of UCHL3 expression in 293T cell lysate.