

**Synaptophysin Antibody**  
Rabbit mAb  
Catalog # AP90291

**Specification**

---

**Synaptophysin Antibody - Product Information**

Application	WB, IHC, ICC
Primary Accession	<a href="#">P08247</a>
Reactivity	Rat
Clonality	Monoclonal
<b>Other Names</b>	
Major synaptic vesicle protein p38; MRXSYP; Synaptophysin; SYP; SYPH	
Isotype	Rabbit IgG
Host	Rabbit
Calculated MW	33845 Da

**Synaptophysin Antibody - Additional Information**

Purification	<b>Affinity-chromatography</b>
Immunogen	<b>A synthesized peptide derived from human Synaptophysin</b>
Description	<b>SYP Possibly involved in structural functions as organizing other membrane components or in targeting the vesicles to the plasma membrane. Involved in the regulation of short-term and long-term synaptic plasticity. Belongs to the synaptophysin/synaptobrevin family. Homohexamer or homotetramer. Note: This description may include information from UniProtKB.</b>
Storage Condition and Buffer	<b>Rabbit IgG in phosphate buffered saline , pH 7.4, 150mM NaCl, 0.02% sodium azide and 50% glycerol. Store at +4°C short term. Store at -20°C long term. Avoid freeze / thaw cycle.</b>

**Synaptophysin Antibody - Protein Information**

**Name** SYP

**Function**

Possibly involved in structural functions as organizing other membrane components or in targeting the vesicles to the plasma membrane. Involved in the regulation of short-term and long-term synaptic plasticity (By similarity).

**Cellular Location**

Cytoplasmic vesicle, secretory vesicle, synaptic vesicle membrane; Multi-pass membrane protein.

Synapse, synaptosome

#### Tissue Location

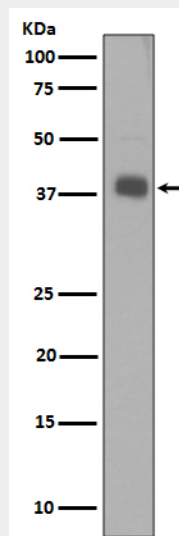
Expressed in the brain, with expression in the hippocampus, the neuropil in the dentate gyrus, where expression is higher in the outer half of the molecular layer than in the inner half, and in the neuropil of CA4 and CA3 (PubMed:8838578). Expressed in the putamen (at protein level) (PubMed:17296554)

#### Synaptophysin Antibody - Protocols

Provided below are standard protocols that you may find useful for product applications.

- [Western Blot](#)
- [Blocking Peptides](#)
- [Dot Blot](#)
- [Immunohistochemistry](#)
- [Immunofluorescence](#)
- [Immunoprecipitation](#)
- [Flow Cytometry](#)
- [Cell Culture](#)

#### Synaptophysin Antibody - Images



Western blot analysis of Synaptophysin expression in SH-SY5Y cell lysate.