

Phospho-alpha Tubulin (Y272) Antibody
Rabbit mAb
Catalog # AP90275**Specification**

Phospho-alpha Tubulin (Y272) Antibody - Product Information

Application	WB, ICC
Primary Accession	P68363
Reactivity	Human
Clonality	Monoclonal

Other Names

Alpha-tubulin 3; B-ALPHA-1; FLJ25113; hum-a-tub1; hum-a-tub2; LIS3; TBA1A; TUBA1A; TUBA3; Tubulin alpha-1A chain; Tubulin alpha-3 chain; Tubulin B-alpha-1; tubulin, alpha 1a; tubulin, alpha 3; tubulin, alpha, brain-specific

Isotype	Rabbit IgG
Host	Rabbit
Calculated MW	50152 Da

Phospho-alpha Tubulin (Y272) Antibody - Additional Information

Purification	Affinity-chromatography
Immunogen	A synthesized peptide derived from human Phospho-alpha Tubulin (Y272)
Description	TUBA1A Tubulin is the major constituent of microtubules. It binds two moles of GTP, one at an exchangeable site on the beta chain and one at a non-exchangeable site on the alpha-chain.
Storage Condition and Buffer	Rabbit IgG in phosphate buffered saline , pH 7.4, 150mM NaCl, 0.02% sodium azide and 50% glycerol. Store at +4°C short term. Store at -20°C long term. Avoid freeze / thaw cycle.

Phospho-alpha Tubulin (Y272) Antibody - Protein Information**Name** TUBA1B**Function**

Tubulin is the major constituent of microtubules, a cylinder consisting of laterally associated linear protofilaments composed of alpha- and beta-tubulin heterodimers (PubMed:34996871). Microtubules grow by the addition of GTP-tubulin dimers to the microtubule end, where a stabilizing cap forms (PubMed:34996871). Below the cap, tubulin dimers are in GDP-bound state, owing to GTPase activity of alpha- tubulin (PubMed:34996871).

Cellular Location

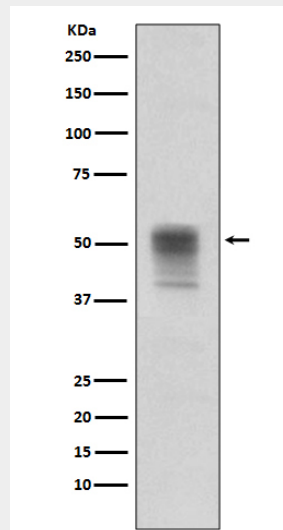
Cytoplasm, cytoskeleton

Phospho-alpha Tubulin (Y272) Antibody - Protocols

Provided below are standard protocols that you may find useful for product applications.

- [Western Blot](#)
- [Blocking Peptides](#)
- [Dot Blot](#)
- [Immunohistochemistry](#)
- [Immunofluorescence](#)
- [Immunoprecipitation](#)
- [Flow Cytometry](#)
- [Cell Culture](#)

Phospho-alpha Tubulin (Y272) Antibody - Images



Western blot analysis on Jurkat cell lysates treated with pervanadate using alpha Tubulin (phospho Y272) Antibody.