

GTPase HRAS Antibody
Rabbit mAb
Catalog # AP90270

Specification

GTPase HRAS Antibody - Product Information

Application	WB, FC, ICC, IP
Primary Accession	P01112
Reactivity	Rat
Clonality	Monoclonal

Other Names

GTPase HRas; H-Ras-1; Ha-Ras; Transforming protein p21; c-H-ras; p21ras; HRAS; HRAS1; GTPase NRas; Transforming protein N-Ras; NRAS; HRAS1; GTPase KRas; K-Ras 2; Ki-Ras; c-K-ras; c-Ki-ras; GTPase KRas; KRAS; KRAS2, RASK2

Isotype	Rabbit IgG
Host	Rabbit
Calculated MW	21298 Da

GTPase HRAS Antibody - Additional Information

Purification	Affinity-chromatography
Immunogen	A synthesized peptide derived from human GTPase HRAS
Description	The KRAS gene encodes the human cellular homolog of a transforming gene isolated from the Kirsten rat sarcoma virus. The RAS proteins are GDP/GTP-binding proteins that act as intracellular signal transducers. The most well-studied members of the RAS (derived from 'Rat Sarcoma' virus) gene family include KRAS, HRAS, and NRAS. These genes encode immunologically related proteins with a molecular mass of 21 kD and are homologs of rodent sarcoma virus genes that have transforming abilities.
Storage Condition and Buffer	Rabbit IgG in phosphate buffered saline , pH 7.4, 150mM NaCl, 0.02% sodium azide and 50% glycerol. Store at +4°C short term. Store at -20°C long term. Avoid freeze / thaw cycle.

GTPase HRAS Antibody - Protein Information

Name HRAS

Synonyms HRAS1

Function

Involved in the activation of Ras protein signal transduction (PubMed:22821884). Ras proteins bind GDP/GTP and possess intrinsic GTPase activity (PubMed:12740440, PubMed:14500341, PubMed:9020151).

Cellular Location

Cell membrane; Lipid-anchor; Cytoplasmic side. Golgi apparatus. Golgi apparatus membrane; Lipid-anchor. Note=The active GTP-bound form is localized most strongly to membranes than the inactive GDP-bound form (By similarity). Shuttles between the plasma membrane and the Golgi apparatus.

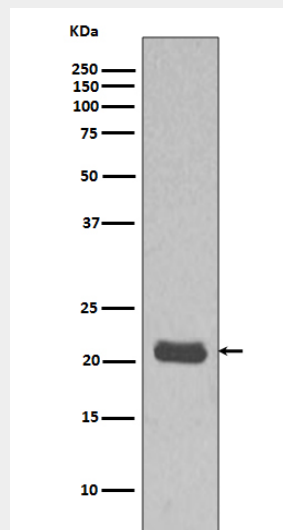
Tissue Location

Widely expressed..

GTPase HRAS Antibody - Protocols

Provided below are standard protocols that you may find useful for product applications.

- [Western Blot](#)
- [Blocking Peptides](#)
- [Dot Blot](#)
- [Immunohistochemistry](#)
- [Immunofluorescence](#)
- [Immunoprecipitation](#)
- [Flow Cytometry](#)
- [Cell Culture](#)

GTPase HRAS Antibody - Images

Western blot analysis MCF7 cell lysate using HRAS Antibody.