

**CD11c Antibody**  
Rabbit mAb  
Catalog # AP90254

## Specification

---

### CD11c Antibody - Product Information

Application	WB, IHC, ICC, IP
Primary Accession	<a href="#">P20702</a>
Clonality	Monoclonal
<b>Other Names</b>	
p150/95 integrin alpha chain; Leu M5; SLEB6; ITGAX; CD11c; p150; Myeloid membrane antigen alpha subunit; Leukocyte surface antigen p150 95 alpha subunit; Integrin alpha-X;	
Isotype	Rabbit IgG
Host	Rabbit
Calculated MW	127829 Da

### CD11c Antibody - Additional Information

Purification	Affinity-chromatography
Immunogen	A synthesized peptide derived from human CD11c
Description	Integrin alpha-X/beta-2 is a receptor for fibrinogen. It recognizes the sequence G-P-R in fibrinogen. It mediates cell-cell interaction during inflammatory responses. It is especially important in monocyte adhesion and chemotaxis.
Storage Condition and Buffer	Rabbit IgG in phosphate buffered saline , pH 7.4, 150mM NaCl, 0.02% sodium azide and 50% glycerol. Store at +4°C short term. Store at -20°C long term. Avoid freeze / thaw cycle.

### CD11c Antibody - Protein Information

**Name** ITGAX

**Synonyms** CD11C

#### Function

Integrin alpha-X/beta-2 is a receptor for fibrinogen. It recognizes the sequence G-P-R in fibrinogen. It mediates cell-cell interaction during inflammatory responses. It is especially important in monocyte adhesion and chemotaxis.

#### Cellular Location

Membrane; Single-pass type I membrane protein.

#### Tissue Location

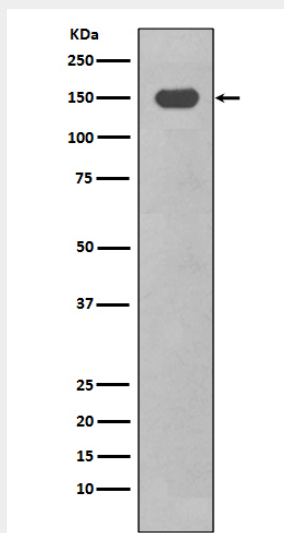
Predominantly expressed in monocytes and granulocytes

### CD11c Antibody - Protocols

Provided below are standard protocols that you may find useful for product applications.

- [Western Blot](#)
- [Blocking Peptides](#)
- [Dot Blot](#)
- [Immunohistochemistry](#)
- [Immunofluorescence](#)
- [Immunoprecipitation](#)
- [Flow Cytometry](#)
- [Cell Culture](#)

### CD11c Antibody - Images



Western blot analysis of CD11c expression in THP-1 cell lysate treated with TPA.