

SOS1 Antibody (Center)
Affinity Purified Rabbit Polyclonal Antibody (Pab)
Catalog # AP9024c

Specification

SOS1 Antibody (Center) - Product Information

Application	WB,E
Primary Accession	Q07889
Reactivity	Human
Host	Rabbit
Clonality	Polyclonal
Isotype	Rabbit IgG
Antigen Region	934-962

SOS1 Antibody (Center) - Additional Information

Gene ID 6654

Other Names

Son of sevenless homolog 1, SOS-1, SOS1

Target/Specificity

This SOS1 antibody is generated from rabbits immunized with a KLH conjugated synthetic peptide between 934-962 amino acids from the Central region of human SOS1.

Dilution

WB~~1:2000

Format

Purified polyclonal antibody supplied in PBS with 0.09% (W/V) sodium azide. This antibody is purified through a protein A column, followed by peptide affinity purification.

Storage

Maintain refrigerated at 2-8°C for up to 2 weeks. For long term storage store at -20°C in small aliquots to prevent freeze-thaw cycles.

Precautions

SOS1 Antibody (Center) is for research use only and not for use in diagnostic or therapeutic procedures.

SOS1 Antibody (Center) - Protein Information

Name SOS1

Function Promotes the exchange of Ras-bound GDP by GTP (PubMed:[8493579](#)). Probably by promoting Ras activation, regulates phosphorylation of MAP kinase MAPK3 in response to EGF (PubMed:[17339331](#)). Catalytic component of a trimeric complex that participates in transduction of signals from Ras to Rac by promoting the Rac-specific guanine nucleotide exchange factor (GEF)

activity (By similarity).

Tissue Location

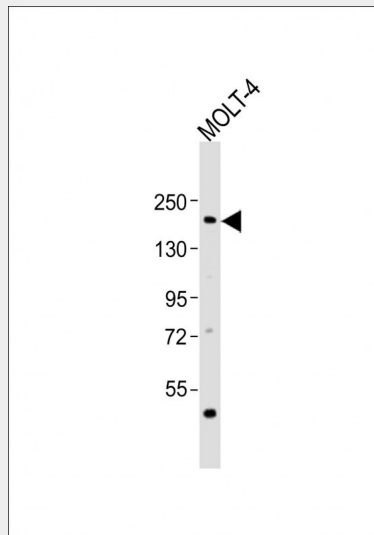
Expressed in gingival tissues.

SOS1 Antibody (Center) - Protocols

Provided below are standard protocols that you may find useful for product applications.

- [Western Blot](#)
- [Blocking Peptides](#)
- [Dot Blot](#)
- [Immunohistochemistry](#)
- [Immunofluorescence](#)
- [Immunoprecipitation](#)
- [Flow Cytometry](#)
- [Cell Culture](#)

SOS1 Antibody (Center) - Images



Anti-SOS1 Antibody (Center) at 1:2000 dilution + MOLT-4 whole cell lysates Lysates/proteins at 20 μ g per lane. Secondary Goat Anti-Rabbit IgG, (H+L), Peroxidase conjugated at 1/10000 dilution Predicted band size : 152.5 kDa Blocking/Dilution buffer: 5% NFDm/TBST.

SOS1 Antibody (Center) - Background

Son of Sevenless 1 protein is an activator of ras proteins by stimulating the exchange of GDP for GTP on ras. Murine Son of Sevenless proteins have been shown to form a complex with activated EGF receptor, coupling tyrosine kinases to ras proteins. The SOS gene was originally isolated in *Drosophila*. Two mammalian homologues (mSOS1 and mSOS2) have been isolated from a mouse cDNA library and are expressed in a variety of mouse embryo and adult tissues. Human SOS1 and SOS2 homologs have also been isolated. The two mouse homologs are approximately 70% identical in composition. The mammalian SOS1 protein has a highly specific guanine nucleotide exchange activity towards p21ras. In epidermal growth factor stimulated cells, SOS1 interacts with SH3 domains of GRB2 and binds via SH2 domain to tyrosine 1068 of activated Epidermal Growth Factor receptor.

SOS1 Antibody (Center) - References

Roberts A.E., et.al., Nat. Genet. 39:70-74(2007).