

Phospho-alpha Synuclein (S129) Antibody
Rabbit mAb
Catalog # AP90244

Specification

Phospho-alpha Synuclein (S129) Antibody - Product Information

Application	WB, IHC, ICC
Primary Accession	P37840
Clonality	Monoclonal
Other Names	
Alpha-synuclein; NACP; non A-beta component of AD amyloid; PARK1; PARK4; PD1; SNCA;	
Isotype	Rabbit IgG
Host	Rabbit
Calculated MW	14460 Da

Phospho-alpha Synuclein (S129) Antibody - Additional Information

Purification	Affinity-chromatography
Immunogen	A synthesized peptide derived from human Phospho-alpha Synuclein (S129)
Description	SNCA a member of the synuclein family. Abundantly expressed in the brain. Inhibits phospholipase D2 selectively. May integrate presynaptic signaling and membrane trafficking. Implicated in the pathogenesis of Parkinson's disease. A major component of amyloid plaques in the brains of patients with Alzheimer's disease. Two alternatively spliced isoforms transcripts have been identified.
Storage Condition and Buffer	Rabbit IgG in phosphate buffered saline , pH 7.4, 150mM NaCl, 0.02% sodium azide and 50% glycerol. Store at +4°C short term. Store at -20°C long term. Avoid freeze / thaw cycle.

Phospho-alpha Synuclein (S129) Antibody - Protein Information

Name SNCA

Synonyms NACP, PARK1

Function

Neuronal protein that plays several roles in synaptic activity such as regulation of synaptic vesicle trafficking and subsequent neurotransmitter release (PubMed: [20798282](http://www.uniprot.org/citations/20798282), PubMed: [26442590](http://www.uniprot.org/citations/26442590), PubMed: [28288128](http://www.uniprot.org/citations/28288128), PubMed: [28288128](http://www.uniprot.org/citations/28288128))

[30404828](http://www.uniprot.org/citations/30404828)). Participates as a monomer in synaptic vesicle exocytosis by enhancing vesicle priming, fusion and dilation of exocytotic fusion pores (PubMed:[28288128](http://www.uniprot.org/citations/28288128), PubMed:[30404828](http://www.uniprot.org/citations/30404828)). Mechanistically, acts by increasing local Ca(2+) release from microdomains which is essential for the enhancement of ATP-induced exocytosis (PubMed:[30404828](http://www.uniprot.org/citations/30404828)). Acts also as a molecular chaperone in its multimeric membrane-bound state, assisting in the folding of synaptic fusion components called SNAREs (Soluble NSF Attachment Protein REceptors) at presynaptic plasma membrane in conjunction with cysteine string protein-alpha/DNAJC5 (PubMed:[20798282](http://www.uniprot.org/citations/20798282)). This chaperone activity is important to sustain normal SNARE-complex assembly during aging (PubMed:[20798282](http://www.uniprot.org/citations/20798282)). Also plays a role in the regulation of the dopamine neurotransmission by associating with the dopamine transporter (DAT1) and thereby modulating its activity (PubMed:[26442590](http://www.uniprot.org/citations/26442590)).

Cellular Location

Cytoplasm. Membrane. Nucleus. Synapse Secreted. Cell projection, axon {ECO:0000250|UniProtKB:O55042}. Note=Membrane-bound in dopaminergic neurons (PubMed:15282274). Expressed and colocalized with SEPTIN4 in dopaminergic axon terminals, especially at the varicosities (By similarity). {ECO:0000250|UniProtKB:O55042, ECO:0000269|PubMed:15282274}

Tissue Location

Highly expressed in presynaptic terminals in the central nervous system. Expressed principally in brain

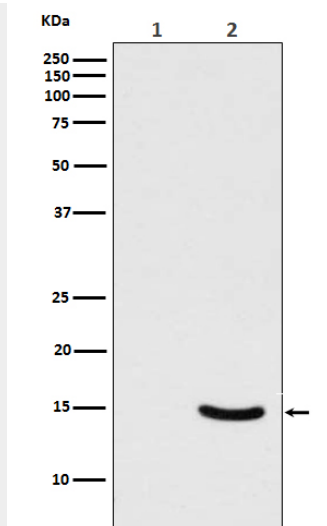
Phospho-alpha Synuclein (S129) Antibody - Protocols

Provided below are standard protocols that you may find useful for product applications.

- [Western Blot](#)
- [Blocking Peptides](#)
- [Dot Blot](#)
- [Immunohistochemistry](#)
- [Immunofluorescence](#)
- [Immunoprecipitation](#)
- [Flow Cytometry](#)
- [Cell Culture](#)

Phospho-alpha Synuclein (S129) Antibody - Images





Western blot analysis of Phospho-alpha Synuclein (Ser129) expression in (1) 293T cell lysate; (2) 293T cell lysate transfected with Polo-Like Kinase 2 and alpha Synuclein.