

**MMP3 Antibody**  
Rabbit mAb  
Catalog # AP90238

## Specification

---

### MMP3 Antibody - Product Information

Application	WB, IHC, ICC
Primary Accession	<a href="#">P08254</a>
Reactivity	Rat
Clonality	Monoclonal
<b>Other Names</b>	
CHDS6; Matrix metalloproteinase-3 MMP3; MMP3; proteoglycanase; SL-1; STMY; STMY1; STR1; Stromelysin-1;	
Isotype	Rabbit IgG
Host	Rabbit
Calculated MW	53977 Da

### MMP3 Antibody - Additional Information

Purification	<b>Affinity-chromatography</b>
Immunogen	<b>A synthesized peptide derived from human MMP3</b>
Description	<b>MMP3 Can degrade fibronectin, laminin, gelatins of type I, III, IV, and V; collagens III, IV, X, and IX, and cartilage proteoglycans. Activates procollagenase. Belongs to the peptidase M10A family.</b>
Storage Condition and Buffer	<b>Rabbit IgG in phosphate buffered saline , pH 7.4, 150mM NaCl, 0.02% sodium azide and 50% glycerol. Store at +4°C short term. Store at -20°C long term. Avoid freeze / thaw cycle.</b>

### MMP3 Antibody - Protein Information

**Name** MMP3

**Synonyms** STMY1

#### Function

Metalloproteinase with a rather broad substrate specificity that can degrade fibronectin, laminin, gelatins of type I, III, IV, and V; collagens III, IV, X, and IX, and cartilage proteoglycans. Activates different molecules including growth factors, plasminogen or other matrix metalloproteinases such as MMP9 (PubMed: [11029580](http://www.uniprot.org/citations/11029580)), PubMed: [1371271](http://www.uniprot.org/citations/1371271)). Once released into the extracellular matrix (ECM), the inactive pro-enzyme is activated by the plasmin cascade signaling pathway (PubMed: [2383557](http://www.uniprot.org/citations/2383557)). Acts also

intracellularly (PubMed:<a href="http://www.uniprot.org/citations/22265821" target="\_blank">22265821</a>). For example, in dopaminergic neurons, gets activated by the serine protease HTRA2 upon stress and plays a pivotal role in DA neuronal degeneration by mediating microglial activation and alpha- synuclein/SNCA cleavage (PubMed:<a href="http://www.uniprot.org/citations/21330369" target="\_blank">21330369</a>). In addition, plays a role in immune response and possesses antiviral activity against various viruses such as vesicular stomatitis virus, influenza A virus (H1N1) and human herpes virus 1 (PubMed:<a href="http://www.uniprot.org/citations/35940311" target="\_blank">35940311</a>). Mechanistically, translocates from the cytoplasm into the cell nucleus upon virus infection to influence NF-kappa-B activities (PubMed:<a href="http://www.uniprot.org/citations/35940311" target="\_blank">35940311</a>).

### Cellular Location

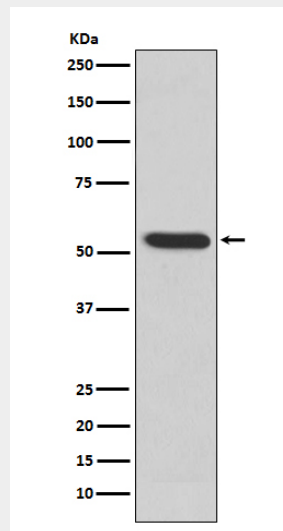
Secreted, extracellular space, extracellular matrix. Nucleus. Cytoplasm

### MMP3 Antibody - Protocols

Provided below are standard protocols that you may find useful for product applications.

- [Western Blot](#)
- [Blocking Peptides](#)
- [Dot Blot](#)
- [Immunohistochemistry](#)
- [Immunofluorescence](#)
- [Immunoprecipitation](#)
- [Flow Cytometry](#)
- [Cell Culture](#)

### MMP3 Antibody - Images



Western blot analysis of MMP3 expression in MMP3 recombinant protein.