

**STAT6 Antibody**  
**Rabbit mAb**  
**Catalog # AP90221**

**Specification**

---

**STAT6 Antibody - Product Information**

Application	<b>WB, FC, ICC</b>
Primary Accession	<a href="#">P42226</a>
Clonality	<b>Monoclonal</b>
<b>Other Names</b>	
IL-4 Stat; IL-4-STAT; interleukin-4 induced; STAT, interleukin4-induced; STAT6; STAT6B; STAT6C;	
Isotype	<b>Rabbit IgG</b>
Host	<b>Rabbit</b>
Calculated MW	<b>94135 Da</b>

**STAT6 Antibody - Additional Information**

Purification	<b>Affinity-chromatography</b>
Immunogen	<b>A synthesized peptide derived from human STAT6</b>
Description	<b>STAT6 transcription factor of the STAT family. Plays a central role in IL4-mediated biological responses. Induces the expression of BCL2L1/BCL-X(L), which is responsible for the anti-apoptotic activity of IL4.</b>
Storage Condition and Buffer	<b>Rabbit IgG in phosphate buffered saline , pH 7.4, 150mM NaCl, 0.02% sodium azide and 50% glycerol. Store at +4°C short term. Store at -20°C long term. Avoid freeze / thaw cycle.</b>

**STAT6 Antibody - Protein Information**

**Name** STAT6

**Function**

Carries out a dual function: signal transduction and activation of transcription. Involved in IL4/interleukin-4- and IL3/interleukin-3-mediated signaling.

**Cellular Location**

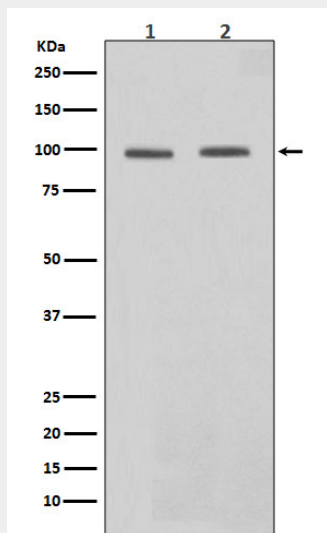
Cytoplasm. Nucleus. Note=Translocated into the nucleus in response to phosphorylation

**STAT6 Antibody - Protocols**

Provided below are standard protocols that you may find useful for product applications.

- [Western Blot](#)
- [Blocking Peptides](#)
- [Dot Blot](#)
- [Immunohistochemistry](#)
- [Immunofluorescence](#)
- [Immunoprecipitation](#)
- [Flow Cytometry](#)
- [Cell Culture](#)

### STAT6 Antibody - Images



Western blot analysis of STAT6 in expression (1)Daudi cell lysate;(2)HeLa cell lysate.