

**CDX2 Antibody**  
Rabbit mAb  
Catalog # AP90176

## Specification

---

### CDX2 Antibody - Product Information

Application	WB, IHC, FC, ICC
Primary Accession	<a href="#">O99626</a>
Reactivity	Rat
Clonality	Monoclonal

#### Other Names

caudal type homeo box transcription factor 2; Homeobox protein CDX-2; Caudal-type homeobox protein 2; CDX3

Isotype	Rabbit IgG
Host	Rabbit
Calculated MW	33520 Da

### CDX2 Antibody - Additional Information

Purification	<b>Affinity-chromatography</b>
Immunogen	<b>A synthesized peptide derived from human CDX2</b>
Description	<b>Involved in the transcriptional regulation of multiple genes expressed in the intestinal epithelium. Important in broad range of functions from early differentiation to maintenance of the intestinal epithelial lining of both the small and large intestine.</b>
Storage Condition and Buffer	<b>Rabbit IgG in phosphate buffered saline , pH 7.4, 150mM NaCl, 0.02% sodium azide and 50% glycerol. Store at +4°C short term. Store at -20°C long term. Avoid freeze / thaw cycle.</b>

### CDX2 Antibody - Protein Information

**Name** CDX2

**Synonyms** CDX3

#### Function

Transcription factor which regulates the transcription of multiple genes expressed in the intestinal epithelium (By similarity). Binds to the promoter of the intestinal sucrase-isomaltase SI and activates SI transcription (By similarity). Binds to the DNA sequence 5'-ATAAAAATTAT-3' in the promoter region of VDR and activates VDR transcription (By similarity). Binds to and activates transcription of LPH (By similarity). Activates transcription of CLDN2 and intestinal mucin MUC2 (By similarity). Binds to the 5'-AATTTTTTACAACACCT-3' DNA sequence in the promoter region of

CA1 and activates CA1 transcription (By similarity). Important in broad range of functions from early differentiation to maintenance of the intestinal epithelial lining of both the small and large intestine. Binds preferentially to methylated DNA (PubMed:<a href="http://www.uniprot.org/citations/28473536" target="\_blank">28473536</a>).

#### Cellular Location

Nucleus {ECO:0000250|UniProtKB:P43241}.

#### Tissue Location

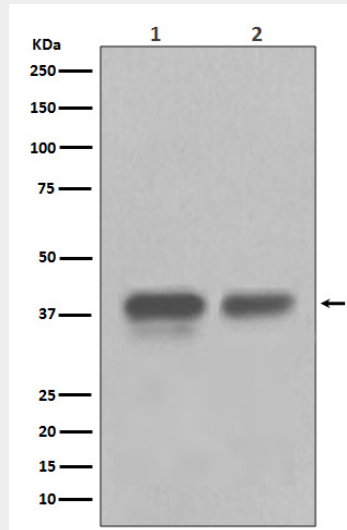
Detected in small intestine, colon and pancreas.

### CDX2 Antibody - Protocols

Provided below are standard protocols that you may find useful for product applications.

- [Western Blot](#)
- [Blocking Peptides](#)
- [Dot Blot](#)
- [Immunohistochemistry](#)
- [Immunofluorescence](#)
- [Immunoprecipitation](#)
- [Flow Cytometry](#)
- [Cell Culture](#)

### CDX2 Antibody - Images



Western blot analysis of CDX2 in (1) HEK293 cell lysate; (2) Colon cancer lysate.