

**ENO1 Antibody**  
**Rabbit mAb**  
**Catalog # AP90166**

## Specification

---

### ENO1 Antibody - Product Information

Application	WB, ICC, IP
Primary Accession	<a href="#">P06733</a>
Reactivity	Rat
Clonality	Monoclonal
<b>Other Names</b>	
ENO1;ENO1L1;MBP-1;MPB1;NNE;PPH;	
Isotype	Rabbit IgG
Host	Rabbit
Calculated MW	47169 Da

### ENO1 Antibody - Additional Information

Purification	Affinity-chromatography
Immunogen	A synthesized peptide derived from human ENO1
Description	Enolase is an important glycolytic enzyme involved in the interconversion of 2-phosphoglycerate to phosphoenolpyruvate. Mammalian enolase exists as three subunits: enolase-1 ( $\alpha$ -enolase), enolase-2 ( $\gamma$ -enolase) and enolase-3 ( $\beta$ -enolase) that can form both homo- and heterodimers. Expression of the enolase isoforms differs in a tissue specific manner.
Storage Condition and Buffer	Rabbit IgG in phosphate buffered saline , pH 7.4, 150mM NaCl, 0.02% sodium azide and 50% glycerol. Store at +4°C short term. Store at -20°C long term. Avoid freeze / thaw cycle.

### ENO1 Antibody - Protein Information

**Name** ENO1

**Synonyms** ENO1L1, MBPB1, MPB1

#### Function

Glycolytic enzyme that catalyzes the conversion of 2-phosphoglycerate to phosphoenolpyruvate (PubMed: [1369209](http://www.uniprot.org/citations/1369209), PubMed: [29775581](http://www.uniprot.org/citations/29775581)). In addition to glycolysis, involved in various processes such as growth control, hypoxia tolerance

and allergic responses (PubMed:<a href="http://www.uniprot.org/citations/10802057" target="\_blank">10802057</a>, PubMed:<a href="http://www.uniprot.org/citations/12666133" target="\_blank">12666133</a>, PubMed:<a href="http://www.uniprot.org/citations/2005901" target="\_blank">2005901</a>, PubMed:<a href="http://www.uniprot.org/citations/29775581" target="\_blank">29775581</a>). May also function in the intravascular and pericellular fibrinolytic system due to its ability to serve as a receptor and activator of plasminogen on the cell surface of several cell-types such as leukocytes and neurons (PubMed:<a href="http://www.uniprot.org/citations/12666133" target="\_blank">12666133</a>). Stimulates immunoglobulin production (PubMed:<a href="http://www.uniprot.org/citations/1369209" target="\_blank">1369209</a>).

### Cellular Location

Cytoplasm. Cell membrane. Cytoplasm, myofibril, sarcomere, M line. Note=Can translocate to the plasma membrane in either the homodimeric (alpha/alpha) or heterodimeric (alpha/gamma) form. ENO1 is localized to the M line

### Tissue Location

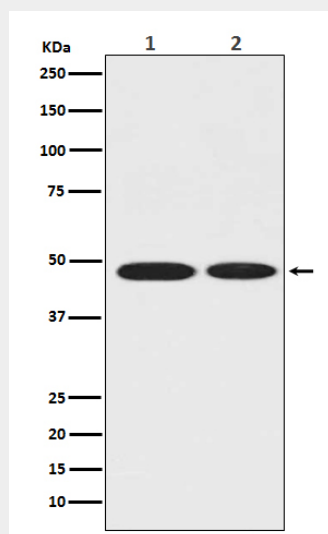
The alpha/alpha homodimer is expressed in embryo and in most adult tissues. The alpha/beta heterodimer and the beta/beta homodimer are found in striated muscle, and the alpha/gamma heterodimer and the gamma/gamma homodimer in neurons

### ENO1 Antibody - Protocols

Provided below are standard protocols that you may find useful for product applications.

- [Western Blot](#)
- [Blocking Peptides](#)
- [Dot Blot](#)
- [Immunohistochemistry](#)
- [Immunofluorescence](#)
- [Immunoprecipitation](#)
- [Flow Cytometry](#)
- [Cell Culture](#)

### ENO1 Antibody - Images



Western blot analysis of ENO1 in (1) MCF-7 whole cell lysate; (2) Rat brain tissue lysate.