

Beclin 1 Antibody
Rabbit mAb
Catalog # AP90155**Specification**

Beclin 1 Antibody - Product Information

Application	WB, IHC, ICC, IP
Primary Accession	Q14457
Reactivity	Rat
Clonality	Monoclonal

Other Names

ATG6; ATG6 autophagy related 6 homolog; Bcl-2-interacting protein beclin; Beclin 1 autophagy related;Beclin-1;Beclin1; BECN1; Protein GT197; VPS30;

Isotype	Rabbit IgG
Host	Rabbit
Calculated MW	51896 Da

Beclin 1 Antibody - Additional Information

Purification	Affinity-chromatography
Immunogen	A synthesized peptide derived from human Beclin 1
Description	Plays a central role in autophagy. Required for the abscission step in cytokinesis. May play a role in antiviral host defense. Protects against infection by a neurovirulent strain of Sindbis virus.
Storage Condition and Buffer	Rabbit IgG in phosphate buffered saline , pH 7.4, 150mM NaCl, 0.02% sodium azide and 50% glycerol. Store at +4°C short term. Store at -20°C long term. Avoid freeze / thaw cycle.

Beclin 1 Antibody - Protein Information**Name** BECN1**Synonyms** GT197**Function**

Plays a central role in autophagy (PubMed: 18570871, PubMed: 21358617, PubMed: 23184933, PubMed: 23974797, PubMed: 25484083, PubMed: 28445460, PubMed: 37776275). Acts as a core subunit of the PI3K complex that mediates

formation of phosphatidylinositol 3-phosphate; different complex forms are believed to play a role in multiple membrane trafficking pathways: PI3KC3-C1 is involved in initiation of autophagosomes and PI3KC3-C2 in maturation of autophagosomes and endocytosis. Involved in regulation of degradative endocytic trafficking and required for the abscission step in cytokinesis, probably in the context of PI3KC3-C2 (PubMed:20208530, PubMed:20643123, PubMed:23974797, PubMed:26783301). Essential for the formation of PI3KC3-C2 but not PI3KC3-C1 PI3K complex forms. Involved in endocytosis (PubMed:25275521). May play a role in antiviral host defense.

Cellular Location

Cytoplasm. Golgi apparatus, trans-Golgi network membrane; Peripheral membrane protein. Endosome membrane; Peripheral membrane protein. Endoplasmic reticulum membrane; Peripheral membrane protein. Mitochondrion membrane; Peripheral membrane protein. Endosome {ECO:0000250|UniProtKB:O88597} Cytoplasmic vesicle, autophagosome. Note=Interaction with ATG14 promotes translocation to autophagosomes. Expressed in dendrites and cell bodies of cerebellar Purkinje cells (By similarity) {ECO:0000250|UniProtKB:O88597, ECO:0000269|PubMed:19050071} [Beclin-1-C 37 kDa]: Mitochondrion {ECO:0000250|UniProtKB:O88597}

Tissue Location

Ubiquitous.

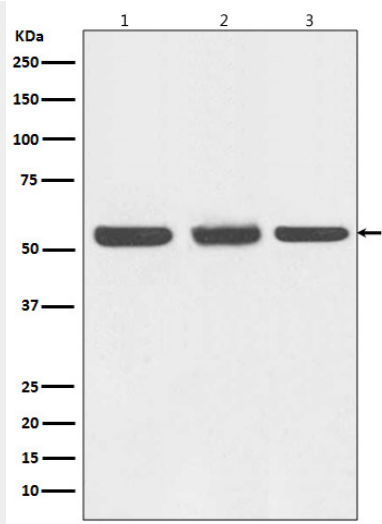
Beclin 1 Antibody - Protocols

Provided below are standard protocols that you may find useful for product applications.

- [Western Blot](#)
- [Blocking Peptides](#)
- [Dot Blot](#)
- [Immunohistochemistry](#)
- [Immunofluorescence](#)
- [Immunoprecipitation](#)
- [Flow Cytometry](#)
- [Cell Culture](#)

Beclin 1 Antibody - Images





Western blot analysis of Beclin 1 expression in (1) HEK293 cell lysate; (2) NIH/3T3 cell lysate; (3) C6 cell lysate.