

Rab4A Antibody
Rabbit mAb
Catalog # AP90150

Specification

Rab4A Antibody - Product Information

Application	WB, ICC, IP
Primary Accession	P20338
Reactivity	Rat
Clonality	Monoclonal

Other Names

Rab4; RAB4A; HRES 1; RAB4; Ras related protein Rab 4A;

Isotype	Rabbit IgG
Host	Rabbit
Calculated MW	24390 Da

Rab4A Antibody - Additional Information

Purification	Affinity-chromatography
Immunogen	A synthesized peptide derived from human Rab4A
Description	The protein encoded by this gene belongs to the rab family. Rab4A protein is involved in the regulation of procathepsin L secretion, it was either inhibited by expression of a Rab4A dominant-negative mutant or increased by overexpression of the wild-type Rab4A in human melanoma cells.
Storage Condition and Buffer	Rabbit IgG in phosphate buffered saline , pH 7.4, 150mM NaCl, 0.02% sodium azide and 50% glycerol. Store at +4°C short term. Store at -20°C long term. Avoid freeze / thaw cycle.

Rab4A Antibody - Protein Information

Name RAB4A

Synonyms RAB4

Function

Small GTPase which cycles between an active GTP-bound and an inactive GDP-bound state (PubMed: [15907487](http://www.uniprot.org/citations/15907487), PubMed: [16034420](http://www.uniprot.org/citations/16034420)). Involved in protein transport (PubMed: [29425100](http://www.uniprot.org/citations/29425100)). Plays a role in vesicular traffic. Mediates VEGFR2 endosomal trafficking to enhance VEGFR2 signaling (PubMed:

<http://www.uniprot.org/citations/29425100>). Acts as a regulator of platelet alpha- granule release during activation and aggregation of platelets (By similarity).

Cellular Location

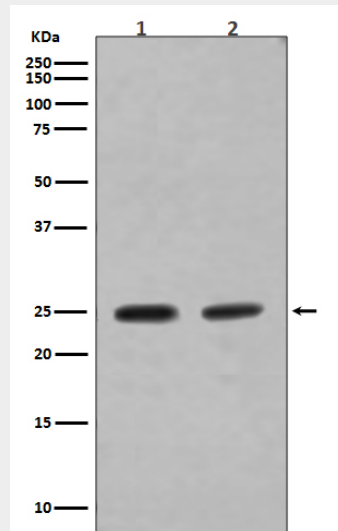
Membrane; Peripheral membrane protein. Cytoplasm Early endosome membrane {ECO:0000250|UniProtKB:P05714}; Peripheral membrane protein {ECO:0000250|UniProtKB:P05714}; Recycling endosome membrane {ECO:0000250|UniProtKB:P05714}; Peripheral membrane protein {ECO:0000250|UniProtKB:P05714}. Note=Generally associated with membranes. Cytoplasmic when phosphorylated by CDK1

Rab4A Antibody - Protocols

Provided below are standard protocols that you may find useful for product applications.

- [Western Blot](#)
- [Blocking Peptides](#)
- [Dot Blot](#)
- [Immunohistochemistry](#)
- [Immunofluorescence](#)
- [Immunoprecipitation](#)
- [Flow Cytometry](#)
- [Cell Culture](#)

Rab4A Antibody - Images



Western blot analysis of Rab4A expression in (1) SH-SY5Y cell lysate; (2) MCF-7 cell lysate.