

**Sonic Hedgehog Antibody**  
Rabbit mAb  
Catalog # AP90139

**Specification**

---

**Sonic Hedgehog Antibody - Product Information**

Application	WB, IHC, FC, ICC
Primary Accession	<a href="#">Q15465</a>
Clonality	Monoclonal
<b>Other Names</b>	
TPT; HHG1; HLP3; HPE3; SMMCI; TPTPS; MCOPCB5; Sonic Hedgehog;	
Isotype	Rabbit IgG
Host	Rabbit
Calculated MW	49607 Da

**Sonic Hedgehog Antibody - Additional Information**

Purification	<b>Affinity-chromatography</b>
Immunogen	<b>A synthesized peptide derived from human Sonic Hedgehog</b>
Description	<b>This gene encodes a protein that is instrumental in patterning the early embryo. It has been implicated as the key inductive signal in patterning of the ventral neural tube, the anterior-posterior limb axis, and the ventral somites. Of three human proteins showing sequence and functional similarity to the sonic hedgehog protein of Drosophila, this protein is the most similar.</b>
Storage Condition and Buffer	<b>Rabbit IgG in phosphate buffered saline , pH 7.4, 150mM NaCl, 0.02% sodium azide and 50% glycerol. Store at +4°C short term. Store at -20°C long term. Avoid freeze / thaw cycle.</b>

**Sonic Hedgehog Antibody - Protein Information**

**Name** SHH ([HGNC:10848](#))

**Function**

[Sonic hedgehog protein]: The C-terminal part of the sonic hedgehog protein precursor displays an autoproteolysis and a cholesterol transferase activity (By similarity). Both activities result in the cleavage of the full-length protein into two parts (ShhN and ShhC) followed by the covalent attachment of a cholesterol moiety to the C-terminal of the newly generated ShhN (By similarity). Both activities occur in the reticulum endoplasmic (By similarity). Once cleaved, ShhC is degraded in the endoplasmic reticulum (By similarity).

### Cellular Location

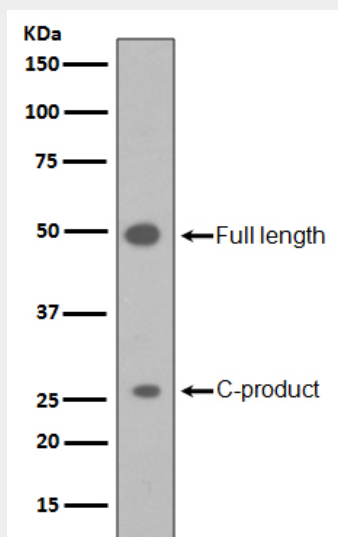
[Sonic hedgehog protein]: Endoplasmic reticulum membrane. Golgi apparatus membrane.  
Secreted Note=Co-localizes with HHAT in the ER and Golgi membrane

### Sonic Hedgehog Antibody - Protocols

Provided below are standard protocols that you may find useful for product applications.

- [Western Blot](#)
- [Blocking Peptides](#)
- [Dot Blot](#)
- [Immunohistochemistry](#)
- [Immunofluorescence](#)
- [Immunoprecipitation](#)
- [Flow Cytometry](#)
- [Cell Culture](#)

### Sonic Hedgehog Antibody - Images



Western blot analysis of Sonic Hedgehog in HepG2 cell lysate.