

CCR9 Antibody
Rabbit mAb
Catalog # AP90123

Specification

CCR9 Antibody - Product Information

| | |
|---|------------------------|
| Application | WB, FC, ICC |
| Primary Accession | P51686 |
| Reactivity | Rat |
| Clonality | Monoclonal |
| Other Names | |
| G-protein coupled receptor 28; GPR-9-6; CDw199;CCR9 | |
| Isotype | Rabbit IgG |
| Host | Rabbit |
| Calculated MW | 42016 Da |

CCR9 Antibody - Additional Information

| | |
|------------------------------|---|
| Purification | Affinity-chromatography |
| Immunogen | A synthesized peptide derived from human CCR9 |
| Description | Receptor for chemokine SCYA25/TECK. Subsequently transduces a signal by increasing the intracellular calcium ions level. Alternative coreceptor with CD4 for HIV-1 infection. |
| Storage Condition and Buffer | Rabbit IgG in phosphate buffered saline , pH 7.4, 150mM NaCl, 0.02% sodium azide and 50% glycerol. Store at +4°C short term. Store at -20°C long term. Avoid freeze / thaw cycle. |

CCR9 Antibody - Protein Information

Name CCR9

Synonyms GPR28

Function

Receptor for chemokine SCYA25/TECK. Subsequently transduces a signal by increasing the intracellular calcium ions level.

Cellular Location

Cell membrane; Multi-pass membrane protein

Tissue Location

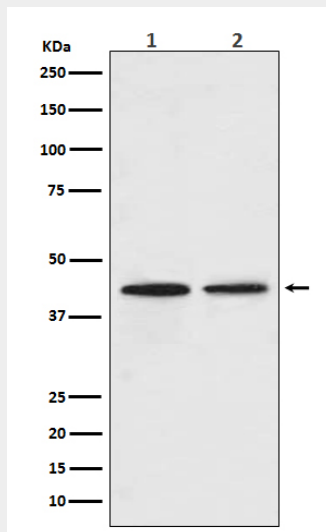
Highly expressed in the thymus and low in lymph nodes and spleen.

CCR9 Antibody - Protocols

Provided below are standard protocols that you may find useful for product applications.

- [Western Blot](#)
- [Blocking Peptides](#)
- [Dot Blot](#)
- [Immunohistochemistry](#)
- [Immunofluorescence](#)
- [Immunoprecipitation](#)
- [Flow Cytometry](#)
- [Cell Culture](#)

CCR9 Antibody - Images



Western blot analysis of CCR9 in (1) A549 cell lysate; (2) Daudi cell lysate.