

**NAMPT Antibody (Center)**  
**Affinity Purified Rabbit Polyclonal Antibody (Pab)**  
**Catalog # AP9010c**

## Specification

---

### NAMPT Antibody (Center) - Product Information

Application	<b>WB, IHC-P,E</b>
Primary Accession	<a href="#">P43490</a>
Other Accession	<a href="#">Q80Z29</a> , <a href="#">Q52I78</a> , <a href="#">Q99KQ4</a>
Reactivity	<b>Human</b>
Predicted	<b>Mouse, Pig, Rat</b>
Host	<b>Rabbit</b>
Clonality	<b>Polyclonal</b>
Isotype	<b>Rabbit IgG</b>
Antigen Region	<b>400-426</b>

### NAMPT Antibody (Center) - Additional Information

**Gene ID** 10135

#### Other Names

Nicotinamide phosphoribosyltransferase, NAMpRTase, Nampt, Pre-B-cell colony-enhancing factor 1, Pre-B cell-enhancing factor, Visfatin, NAMPT, PBEF, PBEF1

#### Target/Specificity

This NAMPT antibody is generated from rabbits immunized with a KLH conjugated synthetic peptide between 400-426 amino acids from the Central region of human NAMPT.

#### Dilution

WB~~1:1000  
IHC-P~~1:10~50

#### Format

Purified polyclonal antibody supplied in PBS with 0.09% (W/V) sodium azide. This antibody is purified through a protein A column, followed by peptide affinity purification.

#### Storage

Maintain refrigerated at 2-8°C for up to 2 weeks. For long term storage store at -20°C in small aliquots to prevent freeze-thaw cycles.

#### Precautions

NAMPT Antibody (Center) is for research use only and not for use in diagnostic or therapeutic procedures.

### NAMPT Antibody (Center) - Protein Information

**Name** NAMPT

### Synonyms PBEF, PBEF1

**Function** Catalyzes the condensation of nicotinamide with 5-phosphoribosyl-1-pyrophosphate to yield nicotinamide mononucleotide, an intermediate in the biosynthesis of NAD. It is the rate limiting component in the mammalian NAD biosynthesis pathway. The secreted form behaves both as a cytokine with immunomodulating properties and an adipokine with anti-diabetic properties, it has no enzymatic activity, partly because of lack of activation by ATP, which has a low level in extracellular space and plasma. Plays a role in the modulation of circadian clock function. NAMPT-dependent oscillatory production of NAD regulates oscillation of clock target gene expression by releasing the core clock component: CLOCK-BMAL1 heterodimer from NAD-dependent SIRT1-mediated suppression (By similarity).

### Cellular Location

Nucleus. Cytoplasm {ECO:0000250|UniProtKB:Q99KQ4}. Secreted Note=Under non-inflammatory conditions, visfatin predominantly exhibits a granular pattern within the nucleus. Secreted by endothelial cells upon IL-1beta stimulation. Abundantly secreted in milk, reaching 100-fold higher concentrations compared to maternal serum

### Tissue Location

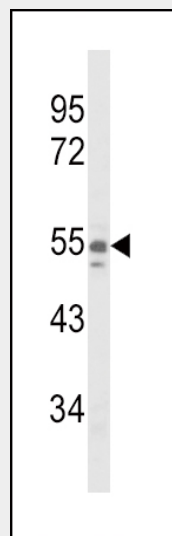
Expressed in large amounts in bone marrow, liver tissue, and muscle. Also present in heart, placenta, lung, and kidney tissues

### NAMPT Antibody (Center) - Protocols

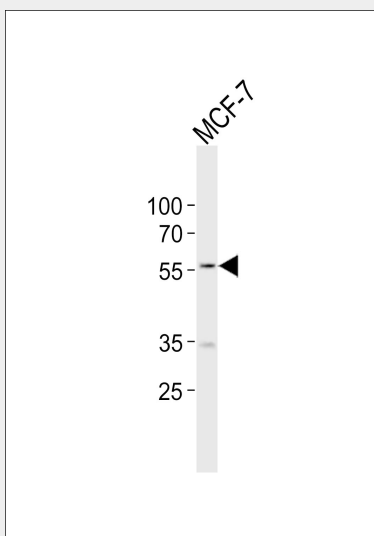
Provided below are standard protocols that you may find useful for product applications.

- [Western Blot](#)
- [Blocking Peptides](#)
- [Dot Blot](#)
- [Immunohistochemistry](#)
- [Immunofluorescence](#)
- [Immunoprecipitation](#)
- [Flow Cytometry](#)
- [Cell Culture](#)

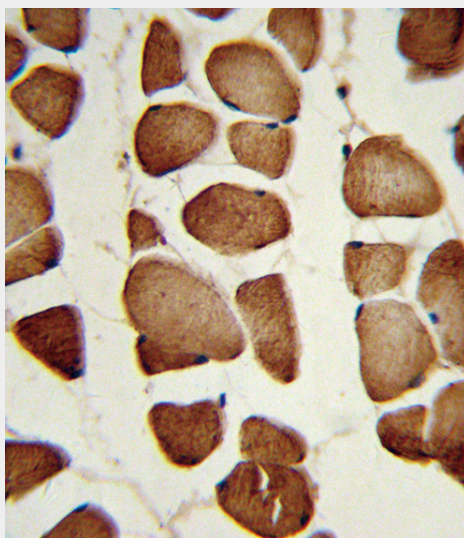
### NAMPT Antibody (Center) - Images



Western blot analysis of NAMPT Antibody (Center) (Cat. #AP9010c) in A375 cell line lysates (35ug/lane). NAMPT (arrow) was detected using the purified Pab.



Western blot analysis of lysate from MCF-7 cell line, using NAMPT Antibody (Center)(Cat. #AP9010c). AP9010c was diluted at 1:1000. A goat anti-rabbit IgG H&L(HRP) at 1:10000 dilution was used as the secondary antibody. Lysate at 20ug.



Formalin-fixed and paraffin-embedded human skeletal muscle reacted with NAMPT Antibody (Center), which was peroxidase-conjugated to the secondary antibody, followed by DAB staining. This data demonstrates the use of this antibody for immunohistochemistry; clinical relevance has not been evaluated.

### **NAMPT Antibody (Center) - Background**

NAMPT catalyzes the condensation of nicotinamide with 5-phosphoribosyl-1-pyrophosphate to yield nicotinamide mononucleotide, one step in the biosynthesis of nicotinamide adenine dinucleotide. The protein is an adipokine that is localized to the bloodstream and has various functions, including the promotion of vascular smooth muscle cell maturation and inhibition of neutrophil apoptosis. It also activates insulin receptor and has insulin-mimetic effects, lowering blood glucose and improving insulin sensitivity. The protein is highly expressed in visceral fat and serum levels of the protein correlate with obesity.

### **NAMPT Antibody (Center) - References**

Samal,B., et.al., Mol. Cell. Biol. 14 (2), 1431-1437 (1994)

**NAMPT Antibody (Center) - Citations**

- [Effect of Phosphoribosyltransferase Down-regulation on Malignant Glioma Cell Characteristics](#)
- [Nicotinamide phosphoribosyl transferase \(Nampt\) is a target of microRNA-26b in colorectal cancer cells.](#)
- [Inhibition of nicotinamide phosphoribosyltransferase: cellular bioenergetics reveals a mitochondrial insensitive NAD pool.](#)