

Topoisomerase II alpha Antibody
Rabbit mAb
Catalog # AP90075**Specification**

Topoisomerase II alpha Antibody - Product Information

Application	WB, IHC, IP
Primary Accession	P11388
Reactivity	Rat
Clonality	Monoclonal
Other Names	
DNA topoisomerase II; DNA topoisomerase II-alpha; TOP2; TOP2A; TP2A; alpha isozyme;	
Isotype	Rabbit IgG
Host	Rabbit
Calculated MW	174385 Da

Topoisomerase II alpha Antibody - Additional Information

Purification	Affinity-chromatography
Immunogen	A synthesized peptide derived from human Topoisomerase II alpha
Description	DNA topoisomerase 2-alpha; DNA topoisomerase II, 170 kD; DNA topoisomerase II, alpha isozyme; TOP2; TOP2A; topoisomerase (DNA) II alpha 170kDa; TP2A.
Storage Condition and Buffer	Rabbit IgG in phosphate buffered saline , pH 7.4, 150mM NaCl, 0.02% sodium azide and 50% glycerol. Store at +4°C short term. Store at -20°C long term. Avoid freeze / thaw cycle.

Topoisomerase II alpha Antibody - Protein Information**Name** TOP2A**Synonyms** TOP2**Function**

Key decatenating enzyme that alters DNA topology by binding to two double-stranded DNA molecules, generating a double-stranded break in one of the strands, passing the intact strand through the broken strand, and religating the broken strand (PubMed:17567603, PubMed:18790802, PubMed:22013166, PubMed:22323612). May play a role in regulating the period length of BMAL1 transcriptional oscillation (By similarity).

Cellular Location

Cytoplasm. Nucleus, nucleoplasm. Nucleus. Nucleus, nucleolus

Tissue Location

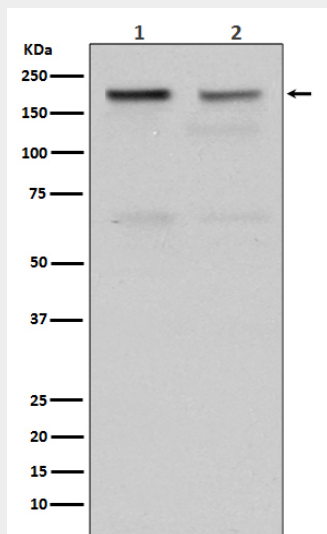
Expressed in the tonsil, spleen, lymph node, thymus, skin, pancreas, testis, colon, kidney, liver, brain and lung (PubMed:9155056). Also found in high-grade lymphomas, squamous cell lung tumors and seminomas (PubMed:9155056)

Topoisomerase II alpha Antibody - Protocols

Provided below are standard protocols that you may find useful for product applications.

- [Western Blot](#)
- [Blocking Peptides](#)
- [Dot Blot](#)
- [Immunohistochemistry](#)
- [Immunofluorescence](#)
- [Immunoprecipitation](#)
- [Flow Cytometry](#)
- [Cell Culture](#)

Topoisomerase II alpha Antibody - Images



Western blot analysis of Topoisomerase II alpha expression in (1) HeLa cell lysate; (2) Jurkat cell lysate.