

**Cubilin Antibody**  
Rabbit mAb  
Catalog # AP90069

## Specification

---

### Cubilin Antibody - Product Information

Application	WB
Primary Accession	<a href="#">O60494</a>
Reactivity	Rat, Human, Mouse
Clonality	Monoclonal
<b>Other Names</b>	
Cubilin; Cubn; IFCR; MGA1; Cubilin precursor; megaloblastic anemia 1;	
Isotype	Rabbit IgG
Host	Rabbit
Calculated MW	398736 Da

### Cubilin Antibody - Additional Information

Purification	Affinity-chromatography
Immunogen	A synthesized peptide derived from human Cubilin
Description	Cotransporter which plays a role in lipoprotein, vitamin and iron metabolism, by facilitating their uptake. Binds to ALB, MB, Kappa and lambda-light chains, TF, hemoglobin, GC, SCGB1A1, APOA1, high density lipoprotein, and the GIF-cobalamin complex. The binding of all ligands requires calcium. Serves as important transporter in several absorptive epithelia, including intestine, renal proximal tubules and embryonic yolk sac.
Storage Condition and Buffer	Rabbit IgG in phosphate buffered saline , pH 7.4, 150mM NaCl, 0.02% sodium azide and 50% glycerol. Store at +4°C short term. Store at -20°C long term. Avoid freeze / thaw cycle.

### Cubilin Antibody - Protein Information

**Name** CUBN

**Synonyms** IFCR

#### Function

Endocytic receptor which plays a role in lipoprotein, vitamin and iron metabolism by facilitating their uptake (PubMed: <http://www.uniprot.org/citations/10371504> target="\_blank">10371504</a>, PubMed: <http://www.uniprot.org/citations/11606717>)

target="\_blank">11606717</a>, PubMed:<a href="http://www.uniprot.org/citations/11717447" target="\_blank">11717447</a>, PubMed:<a href="http://www.uniprot.org/citations/14576052" target="\_blank">14576052</a>, PubMed:<a href="http://www.uniprot.org/citations/9572993" target="\_blank">9572993</a>). Acts together with LRP2 to mediate endocytosis of high-density lipoproteins, GC, hemoglobin, ALB, TF and SCGB1A1. Acts together with AMN to mediate endocytosis of the CBLIF-cobalamin complex (PubMed:<a href="http://www.uniprot.org/citations/14576052" target="\_blank">14576052</a>, PubMed:<a href="http://www.uniprot.org/citations/9572993" target="\_blank">9572993</a>). Binds to ALB, MB, Kappa and lambda- light chains, TF, hemoglobin, GC, SCGB1A1, APOA1, high density lipoprotein, and the CBLIF-cobalamin complex. Ligand binding requires calcium (PubMed:<a href="http://www.uniprot.org/citations/9572993" target="\_blank">9572993</a>). Serves as important transporter in several absorptive epithelia, including intestine, renal proximal tubules and embryonic yolk sac. May play an important role in the development of the peri-implantation embryo through internalization of APOA1 and cholesterol. Binds to LGALS3 at the maternal-fetal interface.

### Cellular Location

Apical cell membrane {ECO:0000250|UniProtKB:Q9JLB4}; Peripheral membrane protein. Cell membrane; Peripheral membrane protein {ECO:0000305, ECO:0000305|PubMed:30523278}. Membrane, coated pit. Endosome. Lysosome membrane {ECO:0000250|UniProtKB:O70244}; Peripheral membrane protein. Note=Lacks a transmembrane domain and depends on interaction with AMN for location at the plasma membrane (PubMed:29402915, PubMed:30523278). Colocalizes with AMN and LRP2 in the endocytotic apparatus of epithelial cells (By similarity) {ECO:0000250|UniProtKB:O70244, ECO:0000269|PubMed:29402915, ECO:0000269|PubMed:30523278}

### Tissue Location

Detected in kidney cortex (at protein level) (PubMed:9572993). Expressed in kidney proximal tubule cells, placenta, visceral yolk-sac cells and in absorptive intestinal cells. Expressed in the epithelium of intestine and kidney

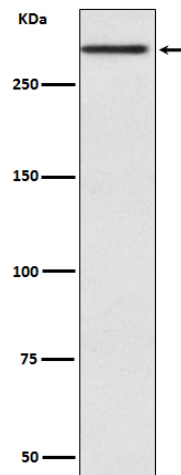
### Cubilin Antibody - Protocols

Provided below are standard protocols that you may find useful for product applications.

- [Western Blot](#)
- [Blocking Peptides](#)
- [Dot Blot](#)
- [Immunohistochemistry](#)
- [Immunofluorescence](#)
- [Immunoprecipitation](#)
- [Flow Cytometry](#)
- [Cell Culture](#)

### Cubilin Antibody - Images





Western blot analysis of Cubilin expression in Human fetal kidney lysate.