

beta Tubulin Antibody (HRP conjugated)
Rabbit mAb
Catalog # AP90057**Specification**

beta Tubulin Antibody (HRP conjugated) - Product Information

Application	WB
Primary Accession	Q13509
Reactivity	Rat
Clonality	Monoclonal

Other Names

beta-4; CFEOM3A; MC1R; TBB3; TUBB3; TUBB4; Tubulin beta-3 chain; tubulin beta-4; Tubulin beta-4 chain; Tubulin beta-III; tubulin, beta 3; tubulin, beta, 4, beta tubulin;

Isotype	Rabbit IgG
Host	Rabbit
Calculated MW	50433 Da

beta Tubulin Antibody (HRP conjugated) - Additional Information

Purification	Affinity-chromatography
Immunogen	A synthesized peptide derived from human beta Tubulin
Description	Microtubules are constituent parts of the mitotic apparatus, cilia, flagella, and elements of the cytoskeleton. They consist principally of 2 soluble proteins, alpha- and beta-tubulin, each of about 55,000 kDa. Antibodies against beta Tubulin are useful as loading controls for Western Blotting. However it should be noted that levels of beta-Tubulin may not be stable in certain cells. For example, expression of beta-Tubulin in adipose tissue is very low and therefore beta-Tubulin should not be used as loading control for these tissues.
Storage Condition and Buffer	Rabbit IgG in phosphate buffered saline , pH 7.4, 150mM NaCl, 0.02% sodium azide and 50% glycerol. Store at +4°C short term. Store at -20°C long term. Avoid freeze / thaw cycle.

beta Tubulin Antibody (HRP conjugated) - Protein Information**Name** TUBB3**Synonyms** TUBB4**Function**

Tubulin is the major constituent of microtubules, a cylinder consisting of laterally associated linear protofilaments composed of alpha- and beta-tubulin heterodimers (PubMed:34996871). Microtubules grow by the addition of GTP-tubulin dimers to the microtubule end, where a stabilizing cap forms (PubMed:34996871). Below the cap, tubulin dimers are in GDP-bound state, owing to GTPase activity of alpha- tubulin (PubMed:34996871). TUBB3 plays a critical role in proper axon guidance and maintenance (PubMed:20074521). Binding of NTN1/Netrin-1 to its receptor UNC5C might cause dissociation of UNC5C from polymerized TUBB3 in microtubules and thereby lead to increased microtubule dynamics and axon repulsion (PubMed:28483977). Plays a role in dorsal root ganglion axon projection towards the spinal cord (PubMed:28483977).

Cellular Location

Cytoplasm, cytoskeleton. Cell projection, growth cone {ECO:0000250|UniProtKB:Q9ERD7}. Cell projection, lamellipodium {ECO:0000250|UniProtKB:Q9ERD7}. Cell projection, filopodium {ECO:0000250|UniProtKB:Q9ERD7}

Tissue Location

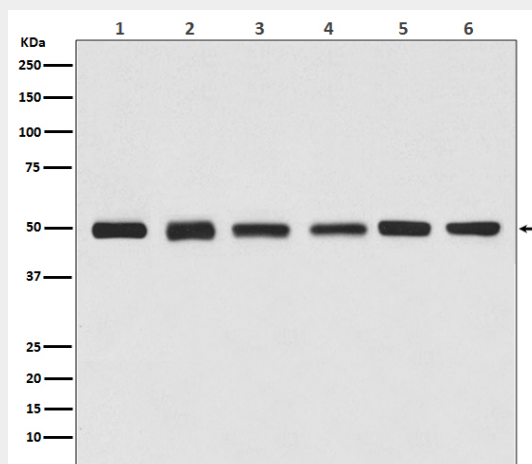
Expression is primarily restricted to central and peripheral nervous system. Greatly increased expression in most cancerous tissues.

beta Tubulin Antibody (HRP conjugated) - Protocols

Provided below are standard protocols that you may find useful for product applications.

- [Western Blot](#)
- [Blocking Peptides](#)
- [Dot Blot](#)
- [Immunohistochemistry](#)
- [Immunofluorescence](#)
- [Immunoprecipitation](#)
- [Flow Cytometry](#)
- [Cell Culture](#)

beta Tubulin Antibody (HRP conjugated) - Images



Western blot analysis of beta Tubulin expression in (1) Jurkat cell lysate, (2) Human kidney lysate, (3) 3T3 cell lysate, (4) Mouse brain lysate, (5) C6 cell lysate, (6) Rat heart lysate.