

EBP Antibody (N-term)
Affinity Purified Rabbit Polyclonal Antibody (Pab)
Catalog # AP9004a**Specification**

EBP Antibody (N-term) - Product Information

Application	WB, IHC-P, FC,E
Primary Accession	Q15125
Reactivity	Human, Mouse
Host	Rabbit
Clonality	Polyclonal
Isotype	Rabbit IgG
Calculated MW	26353
Antigen Region	1-30

EBP Antibody (N-term) - Additional Information**Gene ID** 10682**Other Names**

3-beta-hydroxysteroid-Delta(8), Delta(7)-isomerase, Cholestenol Delta-isomerase, Delta(8)-Delta(7) sterol isomerase, D8-D7 sterol isomerase, Emopamil-binding protein, EBP

Target/Specificity

This EBP antibody is generated from rabbits immunized with a KLH conjugated synthetic peptide between 1-30 amino acids from the N-terminal region of human EBP.

DilutionWB~~1:1000
IHC-P~~1:50~100
FC~~1:10~50**Format**

Purified polyclonal antibody supplied in PBS with 0.09% (W/V) sodium azide. This antibody is purified through a protein A column, followed by peptide affinity purification.

Storage

Maintain refrigerated at 2-8°C for up to 2 weeks. For long term storage store at -20°C in small aliquots to prevent freeze-thaw cycles.

Precautions

EBP Antibody (N-term) is for research use only and not for use in diagnostic or therapeutic procedures.

EBP Antibody (N-term) - Protein Information**Name** EBP ([HGNC:3133](#))

Function Catalyzes the conversion of Delta(8)-sterols to their corresponding Delta(7)-isomers.

Cellular Location

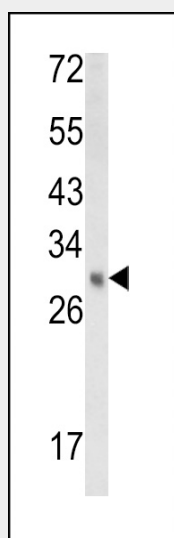
Endoplasmic reticulum membrane; Multi-pass membrane protein. Nucleus envelope Cytoplasmic vesicle. Note=During interphase, detected on the endoplasmic reticulum and the nuclear envelope. During mitosis, detected on cytoplasmic vesicles

EBP Antibody (N-term) - Protocols

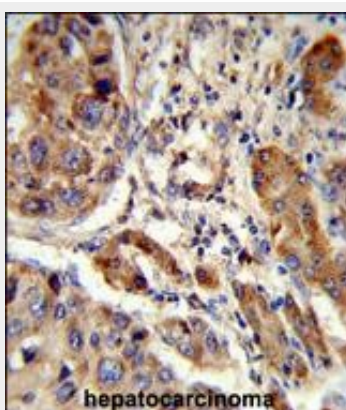
Provided below are standard protocols that you may find useful for product applications.

- [Western Blot](#)
- [Blocking Peptides](#)
- [Dot Blot](#)
- [Immunohistochemistry](#)
- [Immunofluorescence](#)
- [Immunoprecipitation](#)
- [Flow Cytometry](#)
- [Cell Culture](#)

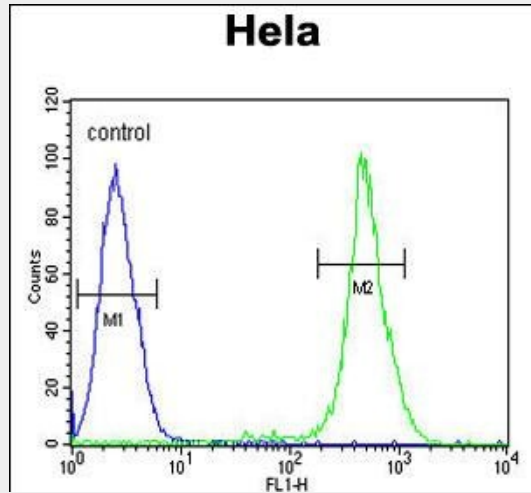
EBP Antibody (N-term) - Images



Western blot analysis of EBP Antibody (N-term) (Cat. #AP9004a) in mouse kidney tissue lysates (35ug/lane). EBP (arrow) was detected using the purified Pab.



Formalin-fixed and paraffin-embedded human hepatocarcinoma reacted with EBP Antibody (N-term), which was peroxidase-conjugated to the secondary antibody, followed by DAB staining. This data demonstrates the use of this antibody for immunohistochemistry; clinical relevance has not been evaluated.



EBP Antibody (N-term) (Cat. #AP9004a) flow cytometric analysis of HeLa cells (right histogram) compared to a negative control cell (left histogram). FITC-conjugated goat-anti-rabbit secondary antibodies were used for the analysis.

EBP Antibody (N-term) - Background

EBP catalyzes the conversion of Delta(8)-sterols to their corresponding Delta(7)-isomers.

EBP Antibody (N-term) - References

Rakheja, D., et al., *Pediatr. Dev. Pathol.* 10 (2), 142-148 (2007)