

GAPDH Antibody
Rabbit mAb
Catalog # AP90018

Specification

GAPDH Antibody - Product Information

Application	WB, IHC, FC, ICC, IP
Primary Accession	P04406
Reactivity	Rat
Clonality	Monoclonal
Other Names	
aging-associated gene 9 protein; G3P; G3PD; GAPD; GAPDH; glyceraldehyde 3-phosphate dehydrogenase; Glyceraldehyde-3-phosphate dehydrogenase; MGC88685;	
Isotype	Rabbit IgG
Host	Rabbit
Calculated MW	36053 Da

GAPDH Antibody - Additional Information

Purification	Affinity-chromatography
Immunogen	A synthesized peptide derived from human GAPDH
Description	Glyceraldehyde 3 phosphate dehydrogenase (GAPDH) is well known as one of the key enzymes involved in glycolysis. GAPDH is constitutively abundant expressed in almost cell types at high levels, therefore antibodies against GAPDH are useful as loading controls for Western Blotting. Some pathology factors, such as hypoxia and diabetes, increased or decreased GAPDH expression in certain cell types.
Storage Condition and Buffer	Rabbit IgG in phosphate buffered saline , pH 7.4, 150mM NaCl, 0.02% sodium azide and 50% glycerol. Store at +4°C short term. Store at -20°C long term. Avoid freeze / thaw cycle.

GAPDH Antibody - Protein Information

Name GAPDH {ECO:0000303|PubMed:2987855, ECO:0000312|HGNC:HGNC:4141}

Function

Has both glyceraldehyde-3-phosphate dehydrogenase and nitrosylase activities, thereby playing a role in glycolysis and nuclear functions, respectively (PubMed:11724794, PubMed:3170585).

Glyceraldehyde-3-phosphate dehydrogenase is a key enzyme in glycolysis that catalyzes the first step of the pathway by converting D- glyceraldehyde 3-phosphate (G3P) into 3-phospho-D-glyceroyl phosphate (PubMed:11724794, PubMed:3170585). Modulates the organization and assembly of the cytoskeleton (By similarity). Facilitates the CHP1- dependent microtubule and membrane associations through its ability to stimulate the binding of CHP1 to microtubules (By similarity). Component of the GAIT (gamma interferon-activated inhibitor of translation) complex which mediates interferon-gamma-induced transcript-selective translation inhibition in inflammation processes (PubMed:23071094). Upon interferon-gamma treatment assembles into the GAIT complex which binds to stem loop-containing GAIT elements in the 3'-UTR of diverse inflammatory mRNAs (such as ceruplasmin) and suppresses their translation (PubMed:23071094). Also plays a role in innate immunity by promoting TNF-induced NF-kappa-B activation and type I interferon production, via interaction with TRAF2 and TRAF3, respectively (PubMed:23332158, PubMed:27387501). Participates in nuclear events including transcription, RNA transport, DNA replication and apoptosis (By similarity). Nuclear functions are probably due to the nitrosylase activity that mediates cysteine S-nitrosylation of nuclear target proteins such as SIRT1, HDAC2 and PRKDC (By similarity).

Cellular Location

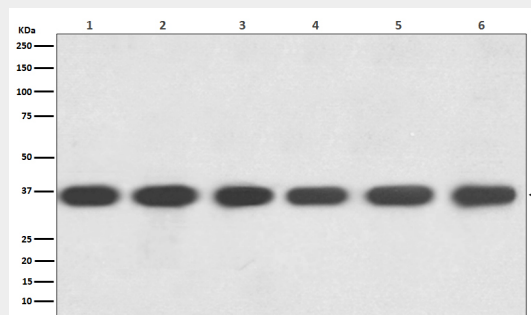
Cytoplasm, cytosol. Nucleus {ECO:0000250|UniProtKB:P04797}. Cytoplasm, perinuclear region. Membrane Cytoplasm, cytoskeleton {ECO:0000250|UniProtKB:P04797} Note=Translocates to the nucleus following S-nitrosylation and interaction with SIAH1, which contains a nuclear localization signal (By similarity). Postnuclear and Perinuclear regions (PubMed:12829261) {ECO:0000250|UniProtKB:P04797, ECO:0000269|PubMed:12829261}

GAPDH Antibody - Protocols

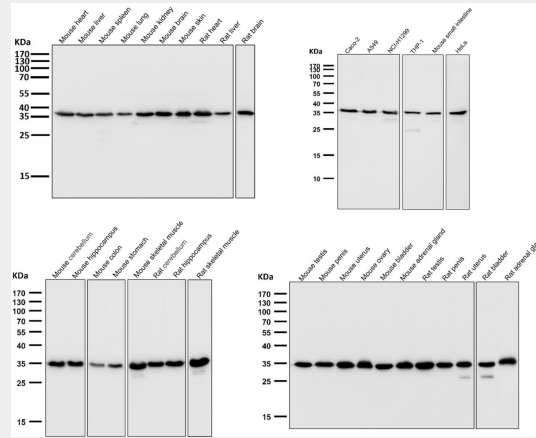
Provided below are standard protocols that you may find useful for product applications.

- [Western Blot](#)
- [Blocking Peptides](#)
- [Dot Blot](#)
- [Immunohistochemistry](#)
- [Immunofluorescence](#)
- [Immunoprecipitation](#)
- [Flow Cytometry](#)
- [Cell Culture](#)

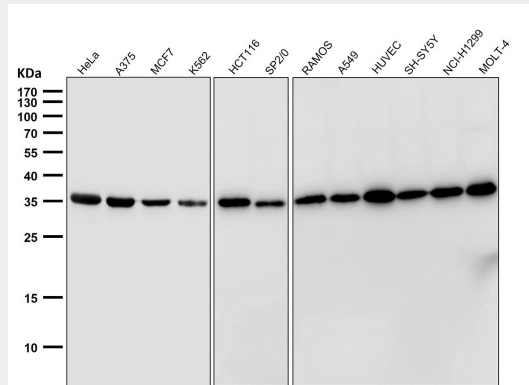
GAPDH Antibody - Images



Western blot analysis of GAPDH expression in (1) Hela cell lysate; (2) Jurkat cell lysate; (3) Mouse kidney lysate; (4) Mouse spleen lysate; (5) RAW 264.7 cell lysate; (6) Rat brain lysate with GAPDH Antibody.



All lanes use GAPDH Antibody at 1:50000 dilution for 1 hour at room temperature.



All lanes use GAPDH Antibody at 1:50000 dilution for 1 hour at room temperature.