

**beta Tubulin Mouse Monoclonal Antibody**  
**Mouse mAb**  
**Catalog # AP90009****Specification**

---

**beta Tubulin Mouse Monoclonal Antibody - Product Information**

Application	WB, IHC, ICC
Primary Accession	<a href="#">P07437</a>
Reactivity	Rat, Dog
Clonality	Monoclonal
<b>Other Names</b>	
Beta 4 tubulin; Beta 5 tubulin; Beta1 tubulin; Tubulin beta chain; Tubulin beta class I;	
Isotype	Mouse IgG1
Host	Mouse
Calculated MW	49671 Da

**beta Tubulin Mouse Monoclonal Antibody - Additional Information**

Purification	<b>Affinity-chromatography</b>
Immunogen	<b>A synthesized peptide derived from human beta Tubulin</b>
Description	<b>Tubulin is the major constituent of microtubules. It binds two moles of GTP, one at an exchangeable site on the beta chain and one at a non-exchangeable site on the alpha-chain.</b>
Storage Condition and Buffer	<b>Mouse IgG in phosphate buffered saline , pH 7.4, 150mM NaCl, 0.02% sodium azide and 50% glycerol. Store at +4°C short term. Store at -20°C long term. Avoid freeze / thaw cycle.</b>

**beta Tubulin Mouse Monoclonal Antibody - Protein Information****Name** TUBB**Synonyms** TUBB5**Function**

Tubulin is the major constituent of microtubules, a cylinder consisting of laterally associated linear protofilaments composed of alpha- and beta-tubulin heterodimers. Microtubules grow by the addition of GTP-tubulin dimers to the microtubule end, where a stabilizing cap forms. Below the cap, tubulin dimers are in GDP-bound state, owing to GTPase activity of alpha-tubulin.

**Cellular Location**

Cytoplasm, cytoskeleton

**Tissue Location**

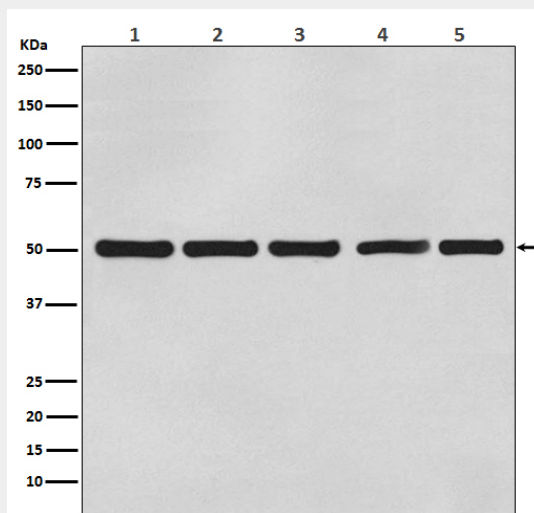
Ubiquitously expressed with highest levels in spleen, thymus and immature brain.

### beta Tubulin Mouse Monoclonal Antibody - Protocols

Provided below are standard protocols that you may find useful for product applications.

- [Western Blot](#)
- [Blocking Peptides](#)
- [Dot Blot](#)
- [Immunohistochemistry](#)
- [Immunofluorescence](#)
- [Immunoprecipitation](#)
- [Flow Cytometry](#)
- [Cell Culture](#)

### beta Tubulin Mouse Monoclonal Antibody - Images



Western blot analysis of beta Actin expression in (1) A431 cell lysate; (2) Rat brain lysate; (3) Mouse kidney lysate; (4) Chicken lung lysate; (5) Hamster spleen lysate with beta Tubulin Mouse Monoclonal Antibody.