

**FCGR2C Antibody (C-term)**  
**Affinity Purified Rabbit Polyclonal Antibody (Pab)**  
**Catalog # AP8992b**

**Specification**

---

**FCGR2C Antibody (C-term) - Product Information**

Application	<b>WB, IHC-P,E</b>
Primary Accession	<a href="#">P31995</a>
Other Accession	<a href="#">P12318</a>
Reactivity	<b>Human</b>
Host	<b>Rabbit</b>
Clonality	<b>Polyclonal</b>
Isotype	<b>Rabbit IgG</b>
Antigen Region	<b>281-307</b>

**FCGR2C Antibody (C-term) - Additional Information**

**Gene ID** 9103

**Other Names**

Low affinity immunoglobulin gamma Fc region receptor II-c, IgG Fc receptor II-c, CDw32, Fc-gamma RII-c, Fc-gamma-RIIc, FcRII-c, CD32, FCGR2C, CD32, FCG2, IGFR2

**Target/Specificity**

This FCGR2C antibody is generated from rabbits immunized with a KLH conjugated synthetic peptide between 281-307 amino acids from the C-terminal region of human FCGR2C.

**Dilution**

WB~~1:1000  
IHC-P~~1:50~100

**Format**

Purified polyclonal antibody supplied in PBS with 0.09% (W/V) sodium azide. This antibody is purified through a protein A column, followed by peptide affinity purification.

**Storage**

Maintain refrigerated at 2-8°C for up to 2 weeks. For long term storage store at -20°C in small aliquots to prevent freeze-thaw cycles.

**Precautions**

FCGR2C Antibody (C-term) is for research use only and not for use in diagnostic or therapeutic procedures.

**FCGR2C Antibody (C-term) - Protein Information**

**Name** FCGR2C

**Synonyms** CD32, FCG2, IGFR2

**Function** Receptor for the Fc region of complexed immunoglobulins gamma. Low affinity receptor. Involved in a variety of effector and regulatory functions such as phagocytosis of immune complexes and modulation of antibody production by B-cells.

**Cellular Location**

[Isoform IIC4]: Cytoplasm. [Isoform IIC2]: Cell membrane; Single-pass type I membrane protein

**Tissue Location**

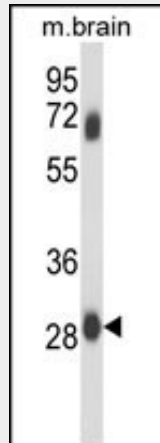
Isoform IIC1 is detected in monocytes, macrophages, polymorphonuclear cells and natural killer cells

**FCGR2C Antibody (C-term) - Protocols**

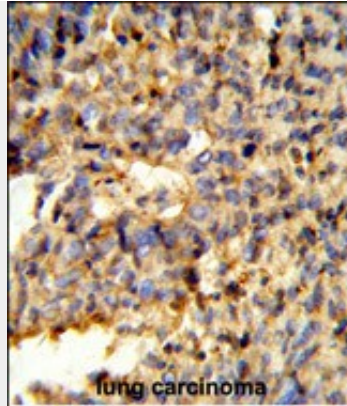
Provided below are standard protocols that you may find useful for product applications.

- [Western Blot](#)
- [Blocking Peptides](#)
- [Dot Blot](#)
- [Immunohistochemistry](#)
- [Immunofluorescence](#)
- [Immunoprecipitation](#)
- [Flow Cytometry](#)
- [Cell Culture](#)

**FCGR2C Antibody (C-term) - Images**



Western blot analysis of FCGR2C Antibody (C-term) (Cat. #AP8992b) in mouse brain tissue lysates (35ug/lane).FCGR2C (arrow) was detected using the purified Pab.



Formalin-fixed and paraffin-embedded human lung carcinoma reacted with FCGR2C Antibody (C-term), which was peroxidase-conjugated to the secondary antibody, followed by DAB staining. This data demonstrates the use of this antibody for immunohistochemistry; clinical relevance has not been evaluated.

#### **FCGR2C Antibody (C-term) - Background**

FCGR2C is the receptor for the Fc region of complexed immunoglobulins gamma. Low affinity receptor. It is involved in a variety of effector and regulatory functions such as phagocytosis of immune complexes and modulation of antibody production by B-cells.

#### **FCGR2C Antibody (C-term) - References**

Metes D., et.al., Blood 91:2369-2380(1998).  
Stuart S.G.,et.al., EMBO J. 8:3657-3666(1989).

#### **FCGR2C Antibody (C-term) - Citations**

- [Live simian immunodeficiency virus vaccine correlate of protection: immune complex-inhibitory Fc receptor interactions that reduce target cell availability.](#)