

**CDC5L Antibody (Center)**  
**Affinity Purified Rabbit Polyclonal Antibody (Pab)**  
**Catalog # AP8949c**

**Specification**

---

**CDC5L Antibody (Center) - Product Information**

Application	WB, FC,E
Primary Accession	<a href="#">Q99459</a>
Reactivity	Human
Host	Rabbit
Clonality	Polyclonal
Isotype	Rabbit IgG
Antigen Region	187-213

**CDC5L Antibody (Center) - Additional Information**

**Gene ID** 988

**Other Names**

Cell division cycle 5-like protein, Cdc5-like protein, Pombe cdc5-related protein, CDC5L, KIAA0432, PCDC5RP

**Target/Specificity**

This CDC5L antibody is generated from rabbits immunized with a KLH conjugated synthetic peptide between 187-213 amino acids from the Central region of human CDC5L.

**Dilution**

WB~~1:1000  
FC~~1:10~50

**Format**

Purified polyclonal antibody supplied in PBS with 0.09% (W/V) sodium azide. This antibody is purified through a protein A column, followed by peptide affinity purification.

**Storage**

Maintain refrigerated at 2-8°C for up to 2 weeks. For long term storage store at -20°C in small aliquots to prevent freeze-thaw cycles.

**Precautions**

CDC5L Antibody (Center) is for research use only and not for use in diagnostic or therapeutic procedures.

**CDC5L Antibody (Center) - Protein Information**

**Name** CDC5L

**Synonyms** KIAA0432, PCDC5RP

**Function** DNA-binding protein involved in cell cycle control. May act as a transcription activator. Plays a role in pre-mRNA splicing as core component of precatalytic, catalytic and postcatalytic spliceosomal complexes (PubMed:[11991638](#), PubMed:[20176811](#), PubMed:[28076346](#), PubMed:[28502770](#), PubMed:[29301961](#), PubMed:[29360106](#), PubMed:[29361316](#), PubMed:[30705154](#), PubMed:[30728453](#)). Component of the PRP19-CDC5L complex that forms an integral part of the spliceosome and is required for activating pre-mRNA splicing. The PRP19-CDC5L complex may also play a role in the response to DNA damage (DDR) (PubMed:[20176811](#)). As a component of the minor spliceosome, involved in the splicing of U12-type introns in pre-mRNAs (Probable).

#### Cellular Location

Nucleus. Nucleus speckle. Cytoplasm Note=May shuttle between cytoplasm and nucleus

#### Tissue Location

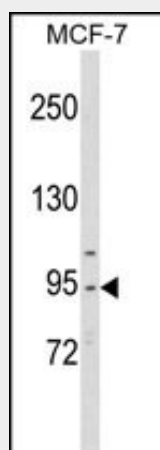
Ubiquitously expressed in both fetal and adult tissues.

### CDC5L Antibody (Center) - Protocols

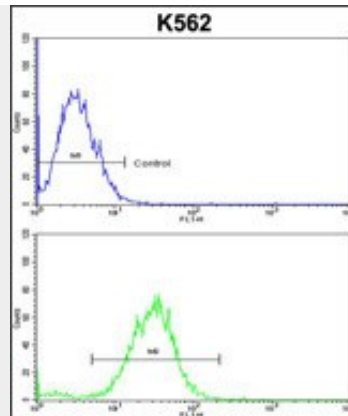
Provided below are standard protocols that you may find useful for product applications.

- [Western Blot](#)
- [Blocking Peptides](#)
- [Dot Blot](#)
- [Immunohistochemistry](#)
- [Immunofluorescence](#)
- [Immunoprecipitation](#)
- [Flow Cytometry](#)
- [Cell Culture](#)

### CDC5L Antibody (Center) - Images



Western blot analysis of CDC5L Antibody (Center) (Cat. #AP8949c) in MCF-7 cell line lysates (35ug/lane). CDC5L (arrow) was detected using the purified Pab.



CDC5L Antibody (Center) (Cat. #AP8949c) flow cytometric analysis of k562 cells (bottom histogram) compared to a negative control cell (top histogram). FITC-conjugated goat-anti-rabbit secondary antibodies were used for the analysis.

#### **CDC5L Antibody (Center) - Background**

The protein is a significant similarity with *Schizosaccharomyces pombe* cdc5 gene product, which is a cell cycle regulator important for G2/M transition. This protein has been demonstrated to act as a positive regulator of cell cycle G2/M progression. It was also found to be an essential component of a non-snRNA spliceosome, which contains at least five additional protein factors and is required for the second catalytic step of pre-mRNA splicing.

#### **CDC5L Antibody (Center) - References**

Grillari, J., et.al., J. Biol. Chem. 284 (42), 29193-29204 (2009) Zhang, N., et.al., EMBO Rep. 10 (9), 1029-1035 (2009)

#### **CDC5L Antibody (Center) - Citations**

- [DNA methylation-regulated miR-193a-3p dictates resistance of hepatocellular carcinoma to 5-fluorouracil via repression of SRSF2 expression.](#)