

**ANGEL1 Antibody (C-term)**  
**Affinity Purified Rabbit Polyclonal Antibody (Pab)**  
**Catalog # AP8945b**

**Specification**

---

**ANGEL1 Antibody (C-term) - Product Information**

Application	WB, IHC-P, FC,E
Primary Accession	<a href="#">O9UNK9</a>
Reactivity	Human, Mouse
Host	Rabbit
Clonality	Polyclonal
Isotype	Rabbit IgG
Calculated MW	75276
Antigen Region	597-624

**ANGEL1 Antibody (C-term) - Additional Information**

**Gene ID** 23357

**Other Names**

Protein angel homolog 1, ANGEL1, KIAA0759

**Target/Specificity**

This ANGEL1 antibody is generated from rabbits immunized with a KLH conjugated synthetic peptide between 597-624 amino acids from the C-terminal region of human ANGEL1.

**Dilution**

WB~~1:1000  
IHC-P~~1:50~100  
FC~~1:10~50

**Format**

Purified polyclonal antibody supplied in PBS with 0.09% (W/V) sodium azide. This antibody is purified through a protein A column, followed by peptide affinity purification.

**Storage**

Maintain refrigerated at 2-8°C for up to 2 weeks. For long term storage store at -20°C in small aliquots to prevent freeze-thaw cycles.

**Precautions**

ANGEL1 Antibody (C-term) is for research use only and not for use in diagnostic or therapeutic procedures.

**ANGEL1 Antibody (C-term) - Protein Information**

**Name** ANGEL1

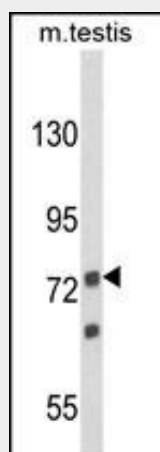
**Synonyms** KIAA0759

## ANGEL1 Antibody (C-term) - Protocols

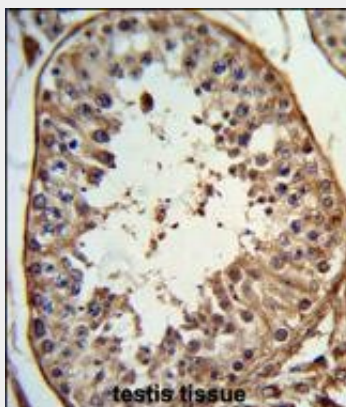
Provided below are standard protocols that you may find useful for product applications.

- [Western Blot](#)
- [Blocking Peptides](#)
- [Dot Blot](#)
- [Immunohistochemistry](#)
- [Immunofluorescence](#)
- [Immunoprecipitation](#)
- [Flow Cytometry](#)
- [Cell Culture](#)

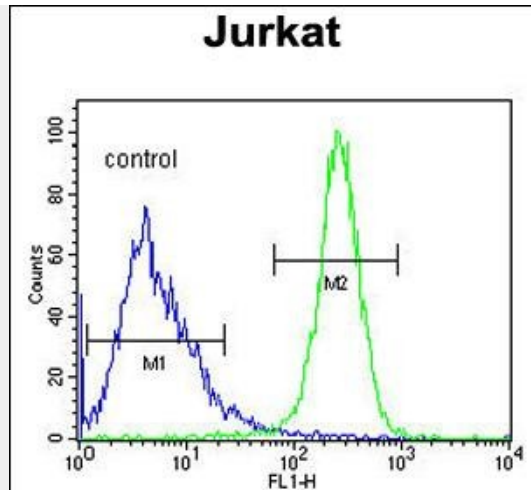
## ANGEL1 Antibody (C-term) - Images



Western blot analysis of ANGEL1 Antibody (C-term) (Cat. #AP8945b) in mouse testis tissue lysates (35ug/lane). ANGEL1 (arrow) was detected using the purified Pab.



Formalin-fixed and paraffin-embedded human testis tissue reacted with ANGEL1 Antibody (C-term), which was peroxidase-conjugated to the secondary antibody, followed by DAB staining. This data demonstrates the use of this antibody for immunohistochemistry; clinical relevance has not been evaluated.



ANGEL1 Antibody (C-term) (Cat. #AP8945b) flow cytometric analysis of Jurkat cells (right histogram) compared to a negative control cell (left histogram). FITC-conjugated goat-anti-rabbit secondary antibodies were used for the analysis.

#### **ANGEL1 Antibody (C-term) - References**

Lipovich, L., et al., Gene 286 (2), 203-213 (2002)