

**IL21 Antibody**  
**Affinity Purified Rabbit Polyclonal Antibody (Pab)**  
**Catalog # AP8931a**

**Specification**

---

**IL21 Antibody - Product Information**

Application	<b>WB, IHC-P, FC,E</b>
Primary Accession	<a href="#">O9HBE4</a>
Reactivity	<b>Human</b>
Host	<b>Rabbit</b>
Clonality	<b>Polyclonal</b>
Isotype	<b>Rabbit IgG</b>

**IL21 Antibody - Additional Information**

**Gene ID** 59067

**Other Names**

Interleukin-21, IL-21, Za11, IL21

**Target/Specificity**

This IL21 antibody is generated from rabbits immunized with human IL21.

**Dilution**

WB~~1:1000  
IHC-P~~1:10~50  
FC~~1:10~50

**Format**

Purified polyclonal antibody supplied in PBS with 0.09% (W/V) sodium azide. This antibody is purified through a protein A column, followed by peptide affinity purification.

**Storage**

Maintain refrigerated at 2-8°C for up to 2 weeks. For long term storage store at -20°C in small aliquots to prevent freeze-thaw cycles.

**Precautions**

IL21 Antibody is for research use only and not for use in diagnostic or therapeutic procedures.

**IL21 Antibody - Protein Information**

**Name** IL21 ([HGNC:6005](#))

**Function** Cytokine with immunoregulatory activity. May promote the transition between innate and adaptive immunity. Induces the production of IgG(1) and IgG(3) in B-cells (By similarity). Implicated in the generation and maintenance of T follicular helper (Tfh) cells and the formation of germinal-centers. Together with IL6, control the early generation of Tfh cells and are critical for an effective antibody response to acute viral infection (By similarity). May play a role in proliferation

and maturation of natural killer (NK) cells in synergy with IL15. May regulate proliferation of mature B- and T-cells in response to activating stimuli. In synergy with IL15 and IL18 stimulates interferon gamma production in T-cells and NK cells (PubMed:[11081504](#), PubMed:[15178704](#)). During T-cell mediated immune response may inhibit dendritic cells (DC) activation and maturation (By similarity).

#### Cellular Location

Secreted.

#### Tissue Location

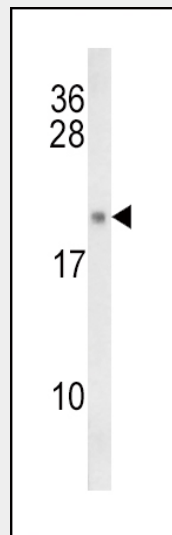
Expressed in activated CD4-positive T-cells but not in CD8-positive T-cells, B-cells, or monocytes

### IL21 Antibody - Protocols

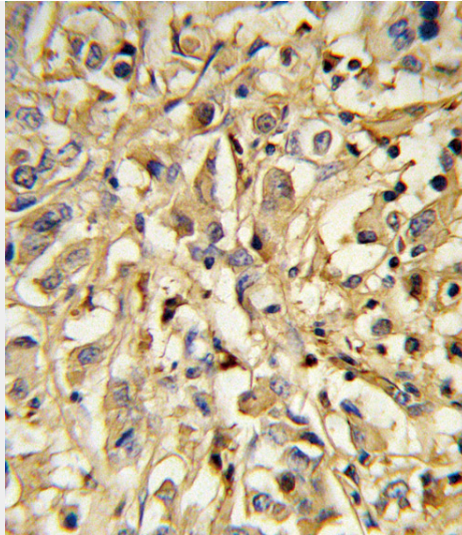
Provided below are standard protocols that you may find useful for product applications.

- [Western Blot](#)
- [Blocking Peptides](#)
- [Dot Blot](#)
- [Immunohistochemistry](#)
- [Immunofluorescence](#)
- [Immunoprecipitation](#)
- [Flow Cytometry](#)
- [Cell Culture](#)

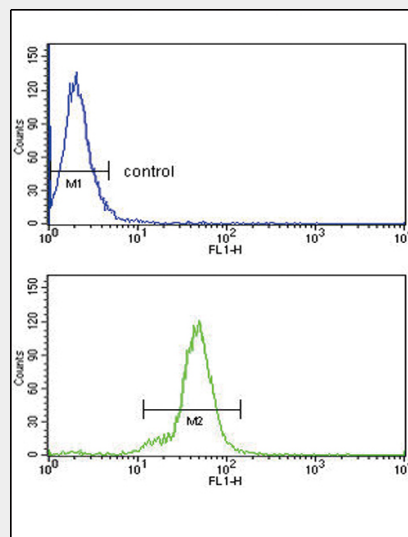
### IL21 Antibody - Images



Western blot analysis of IL21 (Cat. #AP8931a) in MDA-MB435 cell line lysates (35ug/lane). IL21 (arrow) was detected using the purified Pab.



Formalin-fixed and paraffin-embedded human breast carcinoma reacted with IL21 Antibody, which was peroxidase-conjugated to the secondary antibody, followed by DAB staining. This data demonstrates the use of this antibody for immunohistochemistry; clinical relevance has not been evaluated.



IL21 Antibody (Cat.#AP8931a) flow cytometry analysis of MDA-MB231 cells (bottom histogram) compared to a negative control cell (top histogram). FITC-conjugated goat-anti-rabbit secondary antibodies were used for the analysis.

### IL21 Antibody - Background

IL21 may promote the transition between innate and adaptive immunity. It induces the production of IgG(1) and IgG(3) in B-cells (By similarity). It may play a role in proliferation and maturation of natural killer (NK) cells in synergy with IL15 and may regulate proliferation of mature B-and T-cells in response to activating stimuli. In synergy with IL15 and IL18 stimulates interferon gamma production in T-cells and NK cells. During T-cell mediated immune response may inhibit dendritic cells (DC) activation and maturation.

### IL21 Antibody - References

Sivakumar P.V.,et.al., Immunology 112:177-182(2004).