

RAC2 Antibody (C-term)
Affinity Purified Rabbit Polyclonal Antibody (Pab)
Catalog # AP8839b

Specification

RAC2 Antibody (C-term) - Product Information

Application	WB, FC,E
Primary Accession	P15153
Reactivity	Human
Host	Rabbit
Clonality	Polyclonal
Isotype	Rabbit IgG
Calculated MW	21429
Antigen Region	164-188

RAC2 Antibody (C-term) - Additional Information

Gene ID 5880

Other Names

Ras-related C3 botulinum toxin substrate 2, GX, Small G protein, p21-Rac2, RAC2

Target/Specificity

This RAC2 antibody is generated from rabbits immunized with a KLH conjugated synthetic peptide between 164-188 amino acids from the C-terminal region of human RAC2.

Dilution

WB~~1:1000
FC~~1:10~50

Format

Purified polyclonal antibody supplied in PBS with 0.09% (W/V) sodium azide. This antibody is purified through a protein A column, followed by peptide affinity purification.

Storage

Maintain refrigerated at 2-8°C for up to 2 weeks. For long term storage store at -20°C in small aliquots to prevent freeze-thaw cycles.

Precautions

RAC2 Antibody (C-term) is for research use only and not for use in diagnostic or therapeutic procedures.

RAC2 Antibody (C-term) - Protein Information

Name RAC2

Function Plasma membrane-associated small GTPase which cycles between an active GTP-bound and inactive GDP-bound state. In active state binds to a variety of effector proteins to regulate

cellular responses, such as secretory processes, phagocytose of apoptotic cells and epithelial cell polarization. Augments the production of reactive oxygen species (ROS) by NADPH oxidase.

Cellular Location

Cytoplasm. Note=Membrane-associated when activated

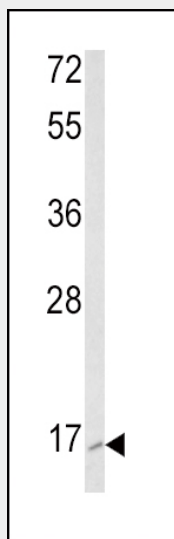
Tissue Location

Hematopoietic specific.

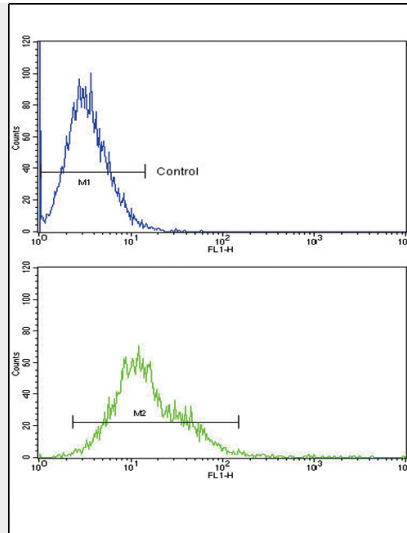
RAC2 Antibody (C-term) - Protocols

Provided below are standard protocols that you may find useful for product applications.

- [Western Blot](#)
- [Blocking Peptides](#)
- [Dot Blot](#)
- [Immunohistochemistry](#)
- [Immunofluorescence](#)
- [Immunoprecipitation](#)
- [Flow Cytometry](#)
- [Cell Culture](#)

RAC2 Antibody (C-term) - Images

Western blot analysis of RAC2 Antibody (C-term) (Cat. #AP8839b) in K562 cell line lysates (35ug/lane). RAC2 (arrow) was detected using the purified Pab.



RAC2 Antibody (C-term) (Cat. #AP8839b) flow cytometric analysis of k562 cells (bottom histogram) compared to a negative control cell (top histogram). FITC-conjugated goat-anti-rabbit secondary antibodies were used for the analysis.

RAC2 Antibody (C-term) - Background

RAC2 is a GTPase which belongs to the RAS superfamily of small GTP-binding proteins. Members of this superfamily appear to regulate a diverse array of cellular events, including the control of cell growth, cytoskeletal reorganization, and the activation of protein kinases.

RAC2 Antibody (C-term) - References

Reibel, L., et al., *Biochem. Biophys. Res. Commun.* 175 (2), 451-458 (1991)
Brechard, S., et al., *J. Leukoc. Biol.* 85 (4), 638-647 (2009)