

**RASL11B Antibody (N-term)**  
**Purified Rabbit Polyclonal Antibody (Pab)**  
**Catalog # AP8789a**

**Specification**

---

**RASL11B Antibody (N-term) - Product Information**

Application	WB, FC,E
Primary Accession	<a href="#">Q9BPW5</a>
Other Accession	<a href="#">Q8AVS6</a> , <a href="#">Q6IMA7</a> , <a href="#">Q922H7</a> , <a href="#">Q5E9J3</a>
Reactivity	Human
Predicted	Bovine, Mouse, Rat, Xenopus
Host	Rabbit
Clonality	Polyclonal
Isotype	Rabbit IgG
Calculated MW	27508
Antigen Region	37-66

**RASL11B Antibody (N-term) - Additional Information**

**Gene ID** 65997

**Other Names**

Ras-like protein family member 11B, RASL11B {ECO:0000312|EMBL:AAH018461}

**Target/Specificity**

This RASL11B antibody is generated from rabbits immunized with a KLH conjugated synthetic peptide between 37-66 amino acids from the N-terminal region of human RASL11B.

**Dilution**

WB~~1:1000  
FC~~1:10~50

**Format**

Purified polyclonal antibody supplied in PBS with 0.09% (W/V) sodium azide. This antibody is prepared by Saturated Ammonium Sulfate (SAS) precipitation followed by dialysis against PBS.

**Storage**

Maintain refrigerated at 2-8°C for up to 2 weeks. For long term storage store at -20°C in small aliquots to prevent freeze-thaw cycles.

**Precautions**

RASL11B Antibody (N-term) is for research use only and not for use in diagnostic or therapeutic procedures.

**RASL11B Antibody (N-term) - Protein Information**

**Name** RASL11B {ECO:0000312|EMBL:AAH01846.1}

### Tissue Location

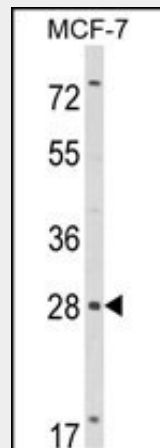
Widely expressed with highest levels in placenta and primary macrophages.

### RASL11B Antibody (N-term) - Protocols

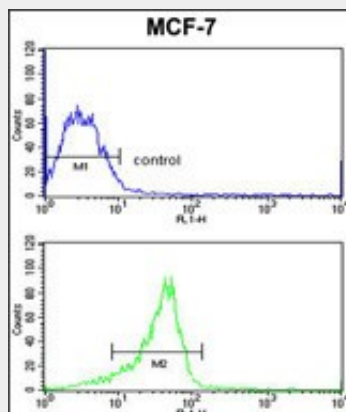
Provided below are standard protocols that you may find useful for product applications.

- [Western Blot](#)
- [Blocking Peptides](#)
- [Dot Blot](#)
- [Immunohistochemistry](#)
- [Immunofluorescence](#)
- [Immunoprecipitation](#)
- [Flow Cytometry](#)
- [Cell Culture](#)

### RASL11B Antibody (N-term) - Images



Western blot analysis of RASL11B Antibody (N-term) (Cat. #AP8789a) in MCF-7 cell line lysates (35ug/lane). RASL11B (arrow) was detected using the purified Pab.



RASL11B Antibody (N-term) (Cat. #AP8789a) flow cytometric analysis of MCF-7 cells (bottom histogram) compared to a negative control cell (top histogram). FITC-conjugated goat-anti-rabbit secondary antibodies were used for the analysis.

### RASL11B Antibody (N-term) - Background

RASL11B may play a role in TGF-beta1-mediated developmental processes & in pathophysiologies such as inflammation, cancer and arteriosclerosis.

**RASL11B Antibody (N-term) - References**

Louro R., et.al., Biochem. Biophys. Res. Commun. 316:618-627(2004).