

**CTHRC1 Antibody (N-term)**  
**Affinity Purified Rabbit Polyclonal Antibody (Pab)**  
**Catalog # AP8778a**

**Specification**

---

**CTHRC1 Antibody (N-term) - Product Information**

Application	WB, IHC-P, FC,E
Primary Accession	<a href="#">O96CG8</a>
Reactivity	Human
Host	Rabbit
Clonality	Polyclonal
Isotype	Rabbit IgG
Antigen Region	19-46

**CTHRC1 Antibody (N-term) - Additional Information**

**Gene ID** 115908

**Other Names**

Collagen triple helix repeat-containing protein 1, Protein NMTC1, CTHRC1

**Target/Specificity**

This CTHRC1 antibody is generated from rabbits immunized with a KLH conjugated synthetic peptide between 19-46 amino acids from the N-terminal region of human CTHRC1.

**Dilution**

WB~~1:16000  
IHC-P~~1:50~100  
FC~~1:10~50

**Format**

Purified polyclonal antibody supplied in PBS with 0.09% (W/V) sodium azide. This antibody is purified through a protein A column, followed by peptide affinity purification.

**Storage**

Maintain refrigerated at 2-8°C for up to 2 weeks. For long term storage store at -20°C in small aliquots to prevent freeze-thaw cycles.

**Precautions**

CTHRC1 Antibody (N-term) is for research use only and not for use in diagnostic or therapeutic procedures.

**CTHRC1 Antibody (N-term) - Protein Information**

**Name** CTHRC1

**Function** May act as a negative regulator of collagen matrix deposition.

### Cellular Location

Secreted, extracellular space, extracellular matrix

### Tissue Location

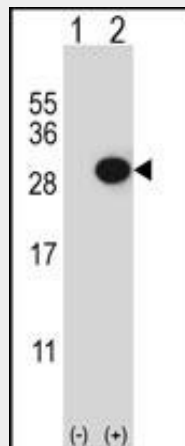
Isoform 1 is expressed in calcified atherosclerotic plaque and chondrocyte-like cells.

### CTHRC1 Antibody (N-term) - Protocols

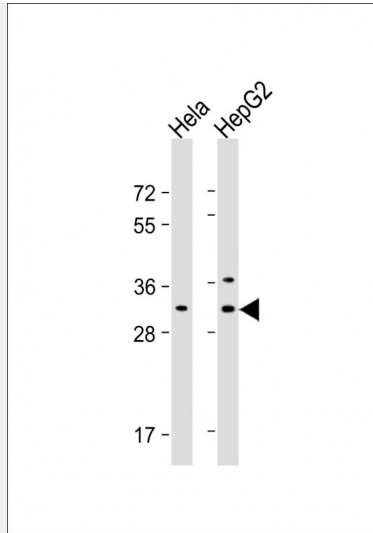
Provided below are standard protocols that you may find useful for product applications.

- [Western Blot](#)
- [Blocking Peptides](#)
- [Dot Blot](#)
- [Immunohistochemistry](#)
- [Immunofluorescence](#)
- [Immunoprecipitation](#)
- [Flow Cytometry](#)
- [Cell Culture](#)

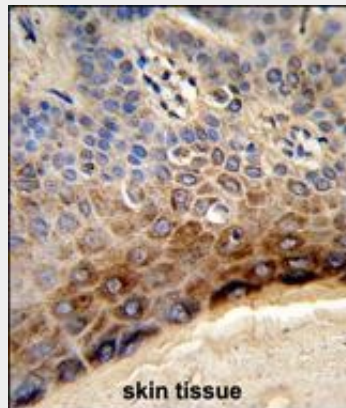
### CTHRC1 Antibody (N-term) - Images



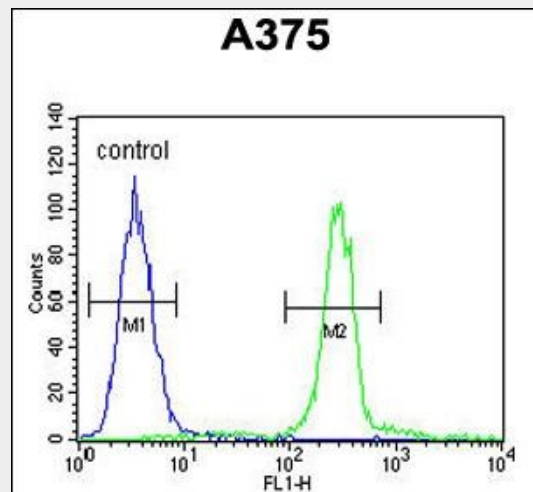
Western blot analysis of CTHRC1 (arrow) using rabbit polyclonal CTHRC1 Antibody (N-term) (Cat. #AP8778a). 293 cell lysates (2 ug/lane) either nontransfected (Lane 1) or transiently transfected (Lane 2) with the CTHRC1 gene.



All lanes : Anti-CTHRC1 Antibody (N-term) at 1:16000 dilution Lane 1: HeLa whole cell lysate Lane 2: HepG2 whole cell lysate Lysates/proteins at 20 µg per lane. Secondary Goat Anti-Rabbit IgG, (H+L), Peroxidase conjugated at 1/10000 dilution. Predicted band size : 26 kDa Blocking/Dilution buffer: 5% NFDN/TBST.



Formalin-fixed and paraffin-embedded human skin tissue reacted with CTHRC1 Antibody (N-term), which was peroxidase-conjugated to the secondary antibody, followed by DAB staining. This data demonstrates the use of this antibody for immunohistochemistry; clinical relevance has not been evaluated.



CTHRC1 Antibody (N-term) (Cat. #AP8778a) flow cytometric analysis of A375 cells (right histogram) compared to a negative control cell (left histogram).FITC-conjugated goat-anti-rabbit secondary antibodies were used for the analysis.

#### **CTHRC1 Antibody (N-term) - Background**

CTHRC1 may act as a negative regulator of collagen matrix deposition (By similarity).

#### **CTHRC1 Antibody (N-term) - References**

Clark,H.F., et.al., Genome Res. 13 (10), 2265-2270 (2003)

#### **CTHRC1 Antibody (N-term) - Citations**

- [Collagen triple helix repeat containing 1 promotes tumor angiogenesis in gastrointestinal stromal tumors.](#)
- [Collagen triple helix repeat containing-1 promotes pancreatic cancer progression by regulating migration and adhesion of tumor cells.](#)