

**DERA Antibody (N-term)**  
**Affinity Purified Rabbit Polyclonal Antibody (Pab)**  
**Catalog # AP8764a**

**Specification**

---

**DERA Antibody (N-term) - Product Information**

Application	WB, IHC-P, FC,E
Primary Accession	<a href="#">O9Y315</a>
Reactivity	Human
Host	Rabbit
Clonality	Polyclonal
Isotype	Rabbit IgG
Calculated MW	35231
Antigen Region	12-41

**DERA Antibody (N-term) - Additional Information**

**Gene ID** 51071

**Other Names**

Deoxyribose-phosphate aldolase, DERA, 2-deoxy-D-ribose 5-phosphate aldolase, Phosphodeoxyriboaldolase, Deoxyriboaldolase, DERA

**Target/Specificity**

This DERA antibody is generated from rabbits immunized with a KLH conjugated synthetic peptide between 12-41 amino acids from the N-terminal region of human DERA.

**Dilution**

WB~~1:1000  
IHC-P~~1:50~100  
FC~~1:10~50

**Format**

Purified polyclonal antibody supplied in PBS with 0.09% (W/V) sodium azide. This antibody is purified through a protein A column, followed by peptide affinity purification.

**Storage**

Maintain refrigerated at 2-8°C for up to 2 weeks. For long term storage store at -20°C in small aliquots to prevent freeze-thaw cycles.

**Precautions**

DERA Antibody (N-term) is for research use only and not for use in diagnostic or therapeutic procedures.

**DERA Antibody (N-term) - Protein Information**

**Name** DERA

**Function** Catalyzes a reversible aldol reaction between acetaldehyde and D-glyceraldehyde 3-phosphate to generate 2-deoxy-D-ribose 5-phosphate. Participates in stress granule (SG) assembly. May allow ATP production from extracellular deoxyinosine in conditions of energy deprivation.

#### Cellular Location

Cytoplasm. Cytoplasmic granule. Nucleus. Note=Recruited to stress granules but not to processing bodies upon arsenite or clotrimazole treatment or energy deprivation.

#### Tissue Location

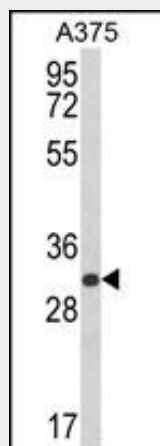
Mainly expressed in liver, lung and colon.

### DERA Antibody (N-term) - Protocols

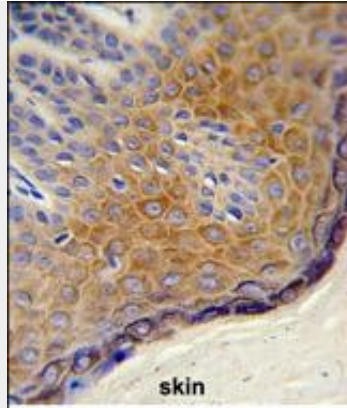
Provided below are standard protocols that you may find useful for product applications.

- [Western Blot](#)
- [Blocking Peptides](#)
- [Dot Blot](#)
- [Immunohistochemistry](#)
- [Immunofluorescence](#)
- [Immunoprecipitation](#)
- [Flow Cytometry](#)
- [Cell Culture](#)

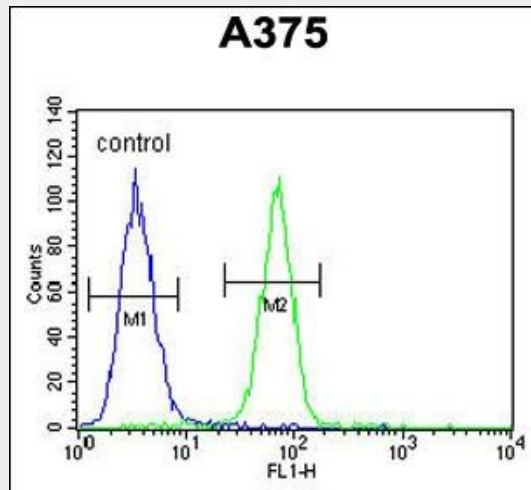
### DERA Antibody (N-term) - Images



Western blot analysis of DERA Antibody (N-term) (Cat. #AP8764a) in A375 cell line lysates (35ug/lane). DERA (arrow) was detected using the purified Pab.



Formalin-fixed and paraffin-embedded human skin reacted with DERA Antibody (N-term), which was peroxidase-conjugated to the secondary antibody, followed by DAB staining. This data demonstrates the use of this antibody for immunohistochemistry; clinical relevance has not been evaluated.



DERA Antibody (N-term) (Cat. #AP8764a) flow cytometric analysis of A375 cells (right histogram) compared to a negative control cell (left histogram). FITC-conjugated goat-anti-rabbit secondary antibodies were used for the analysis.

**DERA Antibody (N-term) - References**

Sgarrella, F., et al., *Comp. Biochem. Physiol. B, Biochem. Mol. Biol.* 117 (2), 253-257 (1997)