

**CCDC3 Antibody (C-term)**  
**Affinity Purified Rabbit Polyclonal Antibody (Pab)**  
**Catalog # AP8744b**

**Specification**

---

**CCDC3 Antibody (C-term) - Product Information**

Application	WB, IHC-P, FC,E
Primary Accession	<a href="#">O9BQI4</a>
Other Accession	<a href="#">O9D6Y1</a>
Reactivity	Human, Mouse
Host	Rabbit
Clonality	Polyclonal
Isotype	Rabbit IgG
Antigen Region	195-222

**CCDC3 Antibody (C-term) - Additional Information**

**Gene ID** 83643

**Other Names**

Coiled-coil domain-containing protein 3, Fat/vessel-derived secretory protein, Favine, CCDC3

**Target/Specificity**

This CCDC3 antibody is generated from rabbits immunized with a KLH conjugated synthetic peptide between 195-222 amino acids from the C-terminal region of human CCDC3.

**Dilution**

WB~~1:1000  
IHC-P~~1:50~100  
FC~~1:10~50

**Format**

Purified polyclonal antibody supplied in PBS with 0.09% (W/V) sodium azide. This antibody is purified through a protein A column, followed by peptide affinity purification.

**Storage**

Maintain refrigerated at 2-8°C for up to 2 weeks. For long term storage store at -20°C in small aliquots to prevent freeze-thaw cycles.

**Precautions**

CCDC3 Antibody (C-term) is for research use only and not for use in diagnostic or therapeutic procedures.

**CCDC3 Antibody (C-term) - Protein Information**

**Name** CCDC3

**Function** Negatively regulates TNF-alpha-induced pro-inflammatory response in endothelial cells

(ECs) via inhibition of TNF-alpha-induced NF-kappaB activation in ECs (PubMed:[25193116](#)). Positively regulates lipid accumulation in adipose cells (By similarity).

#### Cellular Location

Secreted {ECO:0000250|UniProtKB:Q9D6Y1}.

#### Tissue Location

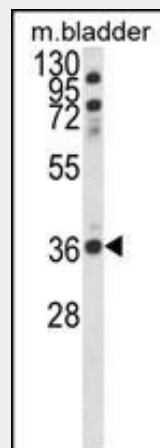
Expressed in umbilical vein endothelial cells (HUVEC), and at lower levels in aortic smooth muscle cells (HASMC)

### CCDC3 Antibody (C-term) - Protocols

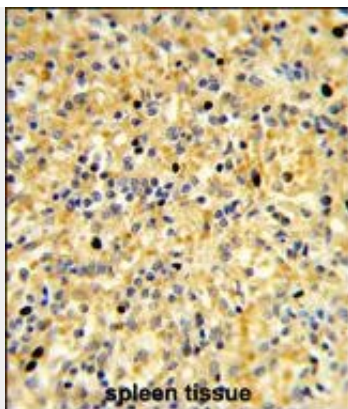
Provided below are standard protocols that you may find useful for product applications.

- [Western Blot](#)
- [Blocking Peptides](#)
- [Dot Blot](#)
- [Immunohistochemistry](#)
- [Immunofluorescence](#)
- [Immunoprecipitation](#)
- [Flow Cytometry](#)
- [Cell Culture](#)

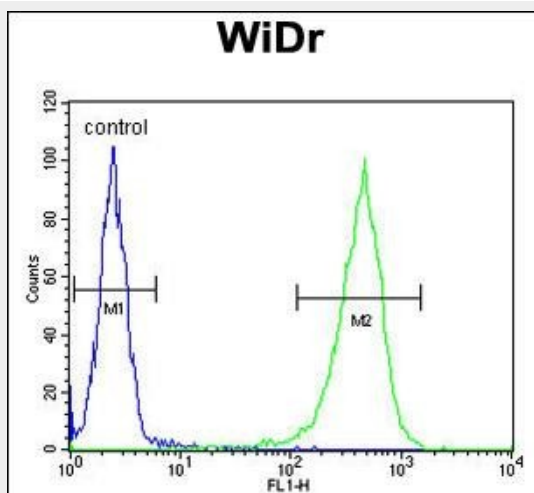
### CCDC3 Antibody (C-term) - Images



Western blot analysis of CCDC3 Antibody (C-term) (Cat. #AP8744b) in mouse bladder tissue lysates (35ug/lane). CCDC3 (arrow) was detected using the purified Pab.



Formalin-fixed and paraffin-embedded human spleen reacted with CCDC3 Antibody (C-term), which was peroxidase-conjugated to the secondary antibody, followed by DAB staining. This data demonstrates the use of this antibody for immunohistochemistry; clinical relevance has not been evaluated.



CCDC3 Antibody (C-term) (Cat. #AP8744b) flow cytometric analysis of WiDr cells (right histogram) compared to a negative control cell (left histogram). FITC-conjugated goat-anti-rabbit secondary antibodies were used for the analysis.

**CCDC3 Antibody (C-term) - References**

Mural, R.J., et al., Submitted (05-JUL-2005) Celera Genomics, 45 W. Gude Dr., Rockville, MD 20850, USA