

**BANK1 Antibody (Center)**  
**Affinity Purified Rabbit Polyclonal Antibody (Pab)**  
**Catalog # AP8667c**

**Specification**

---

**BANK1 Antibody (Center) - Product Information**

Application	<b>WB, FC,E</b>
Primary Accession	<a href="#">Q8NDB2</a>
Reactivity	<b>Human</b>
Host	<b>Rabbit</b>
Clonality	<b>Polyclonal</b>
Isotype	<b>Rabbit IgG</b>
Calculated MW	<b>89282</b>
Antigen Region	<b>119-146</b>

**BANK1 Antibody (Center) - Additional Information**

**Gene ID** 55024

**Other Names**

B-cell scaffold protein with ankyrin repeats, BANK1

**Target/Specificity**

This BANK1 antibody is generated from rabbits immunized with a KLH conjugated synthetic peptide between 119-146 amino acids from the Central region of human BANK1.

**Dilution**

WB~~1:1000  
FC~~1:10~50

**Format**

Purified polyclonal antibody supplied in PBS with 0.09% (W/V) sodium azide. This antibody is purified through a protein A column, followed by peptide affinity purification.

**Storage**

Maintain refrigerated at 2-8°C for up to 2 weeks. For long term storage store at -20°C in small aliquots to prevent freeze-thaw cycles.

**Precautions**

BANK1 Antibody (Center) is for research use only and not for use in diagnostic or therapeutic procedures.

**BANK1 Antibody (Center) - Protein Information**

**Name** BANK1

**Function** Involved in B-cell receptor (BCR)-induced Ca(2+) mobilization from intracellular stores. Promotes Lyn-mediated phosphorylation of IP3 receptors 1 and 2.

### Tissue Location

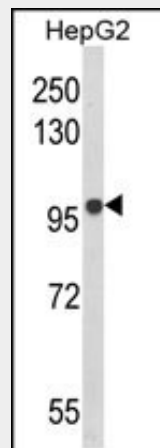
Expressed in B-cell but not T-cell or myeloid cell lines. Highest expression in CD19(+) B-cells, with very low expression in other cell populations.

### BANK1 Antibody (Center) - Protocols

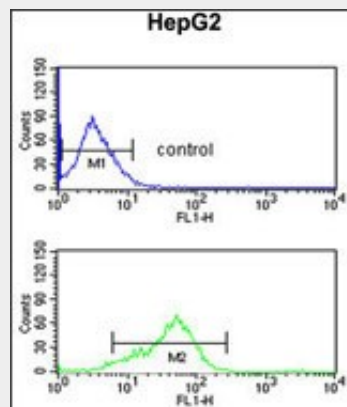
Provided below are standard protocols that you may find useful for product applications.

- [Western Blot](#)
- [Blocking Peptides](#)
- [Dot Blot](#)
- [Immunohistochemistry](#)
- [Immunofluorescence](#)
- [Immunoprecipitation](#)
- [Flow Cytometry](#)
- [Cell Culture](#)

### BANK1 Antibody (Center) - Images



Western blot analysis of BANK1 Antibody (Center) (Cat. #AP8667c) in HepG2 cell line lysates (35ug/lane). BANK1 (arrow) was detected using the purified Pab.



BANK1 Antibody (Center) (Cat. #AP8667c) flow cytometric analysis of HepG2 cells (bottom histogram) compared to a negative control cell (top histogram). FITC-conjugated goat-anti-rabbit secondary antibodies were used for the analysis.

### BANK1 Antibody (Center) - Background

BANK1 is a B-cell-specific scaffold protein and LYN (MIM 165120) tyrosine kinase substrate that promotes tyrosine phosphorylation of inositol 1,4,5-trisphosphate receptors.

#### **BANK1 Antibody (Center) - References**

Orozco,G., et.al., Arthritis Rheum. 60 (2), 372-379 (2009)

Guo,L., et.al., Genes Immun. 10 (5), 531-538 (2009)

#### **BANK1 Antibody (Center) - Citations**

- [Identification of a Novel Serological Marker in Seronegative Rheumatoid Arthritis Using the Peptide Library Approach](#)