

**WNT5B Antibody (Center)**  
**Affinity Purified Rabbit Polyclonal Antibody (Pab)**  
**Catalog # AP8603C**

**Specification**

---

**WNT5B Antibody (Center) - Product Information**

Application	WB, IHC-P, FC,E
Primary Accession	<a href="#">O9H1J7</a>
Other Accession	<a href="#">P33945</a> , <a href="#">P22726</a> , <a href="#">P31286</a> , <a href="#">O9OX07</a> , <a href="#">Q27052</a> , <a href="#">P22725</a> , <a href="#">P41221</a>
Reactivity	Human, Mouse
Predicted	Rabbit, Rat, Xenopus
Host	Rabbit
Clonality	Polyclonal
Isotype	Rabbit IgG
Calculated MW	40323
Antigen Region	153-182

**WNT5B Antibody (Center) - Additional Information**

**Gene ID** 81029

**Other Names**

Protein Wnt-5b, WNT5B

**Target/Specificity**

This WNT5B antibody is generated from rabbits immunized with a KLH conjugated synthetic peptide between 153-182 amino acids from the Central region of human WNT5B.

**Dilution**

WB~~1:1000  
IHC-P~~1:10~50  
FC~~1:10~50

**Format**

Purified polyclonal antibody supplied in PBS with 0.09% (W/V) sodium azide. This antibody is purified through a protein A column, followed by peptide affinity purification.

**Storage**

Maintain refrigerated at 2-8°C for up to 2 weeks. For long term storage store at -20°C in small aliquots to prevent freeze-thaw cycles.

**Precautions**

WNT5B Antibody (Center) is for research use only and not for use in diagnostic or therapeutic procedures.

**WNT5B Antibody (Center) - Protein Information**

## Name WNT5B

**Function** Ligand for members of the frizzled family of seven transmembrane receptors. Probable developmental protein. May be a signaling molecule which affects the development of discrete regions of tissues. Is likely to signal over only few cell diameters (By similarity).

## Cellular Location

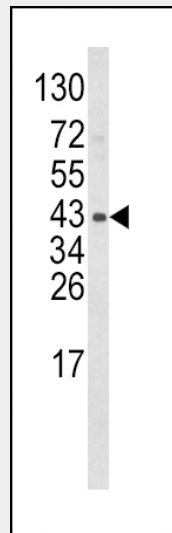
Secreted, extracellular space, extracellular matrix

## WNT5B Antibody (Center) - Protocols

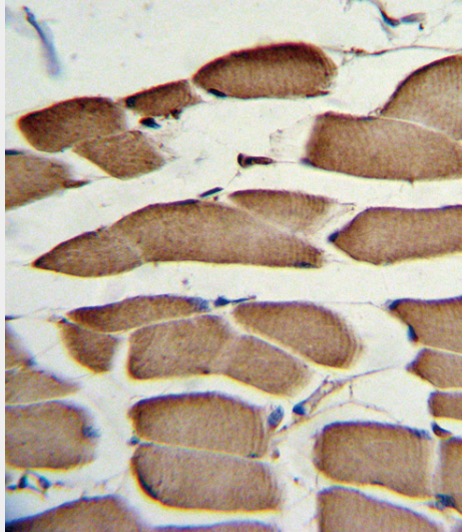
Provided below are standard protocols that you may find useful for product applications.

- [Western Blot](#)
- [Blocking Peptides](#)
- [Dot Blot](#)
- [Immunohistochemistry](#)
- [Immunofluorescence](#)
- [Immunoprecipitation](#)
- [Flow Cytometry](#)
- [Cell Culture](#)

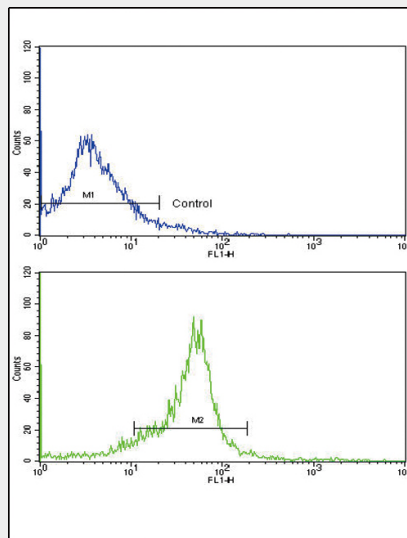
## WNT5B Antibody (Center) - Images



Western blot analysis of WNT5B Antibody (Center) (Cat. #AP8603c) in mouse bladder tissue lysates (35ug/lane). WNT5B (arrow) was detected using the purified Pab.



Formalin-fixed and paraffin-embedded human skeletal muscle with WNT5B Antibody (Center), which was peroxidase-conjugated to the secondary antibody, followed by DAB staining. This data demonstrates the use of this antibody for immunohistochemistry; clinical relevance has not been evaluated.



Flow cytometric analysis of widr cells using WNT5B Antibody (Center)(bottom histogram) compared to a negative control cell (top histogram). FITC-conjugated goat-anti-rabbit secondary antibodies were used for the analysis.

**WNT5B Antibody (Center) - Background**

WNT5B is a protein which shows 94% and 80% amino acid identity to the mouse Wnt5b protein and the human WNT5A protein, respectively.

**WNT5B Antibody (Center) - References**

Saitoh,T. et.al., Int. J. Mol. Med. 10 (3), 345-349 (2002) Yates,K.E. et.al., Osteoarthr. Cartil. 12 (6), 497-505 (2004)