

**C5 Antibody (N-term)**  
**Affinity Purified Rabbit Polyclonal Antibody (Pab)**  
**Catalog # AP8577a****Specification**

---

**C5 Antibody (N-term) - Product Information**

Application	<b>WB, IHC-P, FC,E</b>
Primary Accession	<a href="#">P01031</a>
Reactivity	<b>Human</b>
Host	<b>Rabbit</b>
Clonality	<b>Polyclonal</b>
Isotype	<b>Rabbit IgG</b>
Antigen Region	<b>253-281</b>

**C5 Antibody (N-term) - Additional Information****Gene ID** 727**Other Names**

Complement C5, C3 and PZP-like alpha-2-macroglobulin domain-containing protein 4, Complement C5 beta chain, Complement C5 alpha chain, C5a anaphylatoxin, Complement C5 alpha' chain, C5, CPAMD4

**Target/Specificity**

This C5 antibody is generated from rabbits immunized with a KLH conjugated synthetic peptide between 253-281 amino acids of human C5.

**Dilution**

WB~~1:1000  
IHC-P~~1:50~100  
FC~~1:10~50

**Format**

Purified polyclonal antibody supplied in PBS with 0.09% (W/V) sodium azide. This antibody is purified through a protein A column, followed by peptide affinity purification.

**Storage**

Maintain refrigerated at 2-8°C for up to 2 weeks. For long term storage store at -20°C in small aliquots to prevent freeze-thaw cycles.

**Precautions**

C5 Antibody (N-term) is for research use only and not for use in diagnostic or therapeutic procedures.

**C5 Antibody (N-term) - Protein Information****Name** C5

## Synonyms CPAMD4

**Function** Activation of C5 by a C5 convertase initiates the spontaneous assembly of the late complement components, C5-C9, into the membrane attack complex. C5b has a transient binding site for C6. The C5b-C6 complex is the foundation upon which the lytic complex is assembled.

## Cellular Location

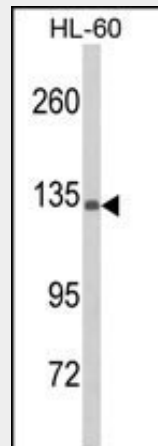
Secreted.

## C5 Antibody (N-term) - Protocols

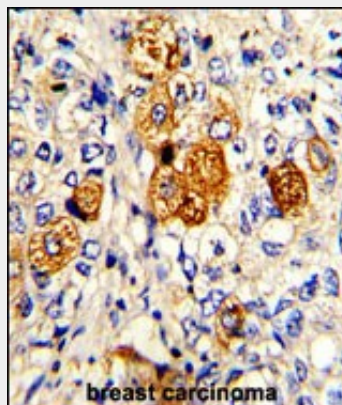
Provided below are standard protocols that you may find useful for product applications.

- [Western Blot](#)
- [Blocking Peptides](#)
- [Dot Blot](#)
- [Immunohistochemistry](#)
- [Immunofluorescence](#)
- [Immunoprecipitation](#)
- [Flow Cytometry](#)
- [Cell Culture](#)

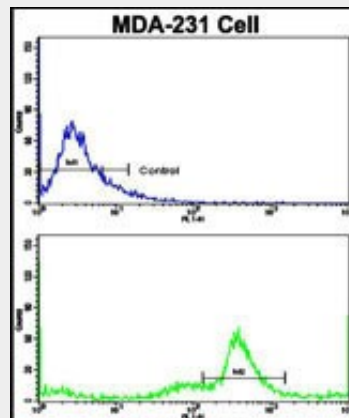
## C5 Antibody (N-term) - Images



Western blot analysis of C5 Antibody (N-term) (Cat. #AP8577a) in HL-60 cell line lysates (35ug/lane). C5 (arrow) was detected using the purified Pab.(2ug/ml)



Formalin-fixed and paraffin-embedded human breast carcinoma with C5 Antibody (N-term), which was peroxidase-conjugated to the secondary antibody, followed by DAB staining. This data demonstrates the use of this antibody for immunohistochemistry; clinical relevance has not been evaluated.



Flow cytometric analysis of MDA-231 cells using C5 Antibody (N-term)(bottom histogram) compared to a negative control cell (top histogram). FITC-conjugated goat-anti-rabbit secondary antibodies were used for the analysis.

### **C5 Antibody (N-term) - Background**

C5 is the fifth component of complement, which plays an important role in inflammatory and cell killing processes. This protein is comprised of alpha and beta polypeptide chains that are linked by a disulfide bridge. An activation peptide, C5a, which is an anaphylatoxin that possesses potent spasmogenic and chemotactic activity, is derived from the alpha polypeptide via cleavage with a convertase. The C5b macromolecular cleavage product can form a complex with the C6 complement component, and this complex is the basis for formation of the membrane attack complex, which includes additional complement components.

### **C5 Antibody (N-term) - References**

McClure,A., et.al., Rheumatology (Oxford) 48 (11), 1369-1374 (2009)  
DiScipio,R.G.et.al., J. Biol. Chem. 267 (24), 17087-17094 (1992)

### **C5 Antibody (N-term) - Citations**

- [SAK-HV Triggered a Short-period Lipid-lowering Biotherapy Based on the Energy Model of Liver Proliferation via a Novel Pathway.](#)