

**CECR5 Antibody (Center)**  
**Affinity Purified Rabbit Polyclonal Antibody (Pab)**  
**Catalog # AP8560c**

**Specification**

---

**CECR5 Antibody (Center) - Product Information**

|                   |                        |
|-------------------|------------------------|
| Application       | WB, IHC-P, FC,E        |
| Primary Accession | <a href="#">Q9BXW7</a> |
| Reactivity        | Human                  |
| Host              | Rabbit                 |
| Clonality         | Polyclonal             |
| Isotype           | Rabbit IgG             |
| Calculated MW     | 46321                  |
| Antigen Region    | 164-190                |

**CECR5 Antibody (Center) - Additional Information**

**Gene ID** 27440

**Other Names**

Cat eye syndrome critical region protein 5, CECR5

**Target/Specificity**

This CECR5 antibody is generated from rabbits immunized with a KLH conjugated synthetic peptide between 164-190 amino acids from the Central region of human CECR5.

**Dilution**

WB~~1:1000  
IHC-P~~1:50~100  
FC~~1:10~50

**Format**

Purified polyclonal antibody supplied in PBS with 0.09% (W/V) sodium azide. This antibody is purified through a protein A column, followed by peptide affinity purification.

**Storage**

Maintain refrigerated at 2-8°C for up to 2 weeks. For long term storage store at -20°C in small aliquots to prevent freeze-thaw cycles.

**Precautions**

CECR5 Antibody (Center) is for research use only and not for use in diagnostic or therapeutic procedures.

**CECR5 Antibody (Center) - Protein Information**

**Name** HDHD5 ([HGNC:1843](#))

**Tissue Location**

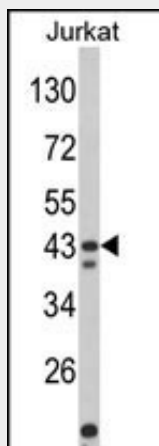
Widely expressed.

### CECR5 Antibody (Center) - Protocols

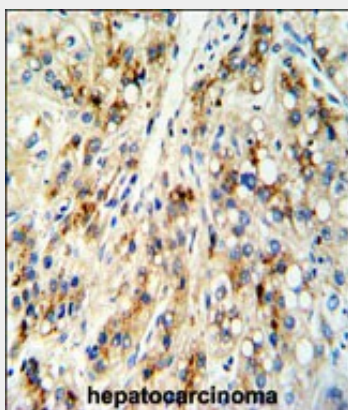
Provided below are standard protocols that you may find useful for product applications.

- [Western Blot](#)
- [Blocking Peptides](#)
- [Dot Blot](#)
- [Immunohistochemistry](#)
- [Immunofluorescence](#)
- [Immunoprecipitation](#)
- [Flow Cytometry](#)
- [Cell Culture](#)

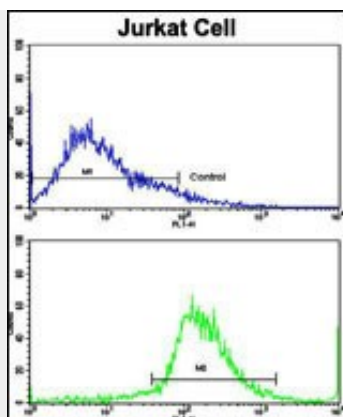
### CECR5 Antibody (Center) - Images



Western blot analysis of CECR5 Antibody (Center) (Cat. #AP8560c) in Jurkat cell line lysates (35ug/lane). CECR5 (arrow) was detected using the purified Pab.



Formalin-fixed and paraffin-embedded human hepatocarcinoma reacted with CECR5 Antibody (Center), which was peroxidase-conjugated to the secondary antibody, followed by DAB staining. This data demonstrates the use of this antibody for immunohistochemistry; clinical relevance has not been evaluated.



Flow cytometric analysis of jurkat cells using CECR5 Antibody (Center)(bottom histogram) compared to a negative control cell (top histogram). FITC-conjugated goat-anti-rabbit secondary antibodies were used for the analysis.

#### **CECR5 Antibody (Center) - References**

Footz,T.K., et.al., Genome Res. 11 (6), 1053-1070 (2001)