

PIGR Antibody (C-term)
Affinity Purified Rabbit Polyclonal Antibody (Pab)
Catalog # AP8555B

Specification

PIGR Antibody (C-term) - Product Information

Application	IF, WB, IHC-P, FC,E
Primary Accession	P01833
Reactivity	Human
Host	Rabbit
Clonality	Polyclonal
Isotype	Rabbit IgG
Antigen Region	646-672

PIGR Antibody (C-term) - Additional Information

Gene ID 5284

Other Names

Polymeric immunoglobulin receptor, PIgR, Poly-Ig receptor, Hepatocellular carcinoma-associated protein TB6, Secretory component, PIGR

Target/Specificity

This PIGR antibody is generated from rabbits immunized with a KLH conjugated synthetic peptide between 646-672 amino acids from the C-terminal region of human PIGR.

Dilution

IF~~1:10~50
WB~~1:1000
IHC-P~~1:10~50
FC~~1:10~50

Format

Purified polyclonal antibody supplied in PBS with 0.09% (W/V) sodium azide. This antibody is purified through a protein A column, followed by peptide affinity purification.

Storage

Maintain refrigerated at 2-8°C for up to 2 weeks. For long term storage store at -20°C in small aliquots to prevent freeze-thaw cycles.

Precautions

PIGR Antibody (C-term) is for research use only and not for use in diagnostic or therapeutic procedures.

PIGR Antibody (C-term) - Protein Information

Name PIGR

Function [Polymeric immunoglobulin receptor]: Mediates selective transcytosis of polymeric IgA and IgM across mucosal epithelial cells. Binds polymeric IgA and IgM at the basolateral surface of epithelial cells. The complex is then transported across the cell to be secreted at the apical surface. During this process, a cleavage occurs that separates the extracellular (known as the secretory component) from the transmembrane segment.

Cellular Location

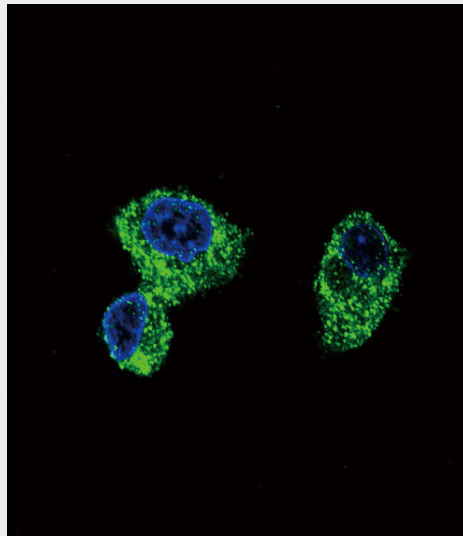
[Polymeric immunoglobulin receptor]: Cell membrane; Single-pass type I membrane protein

PIGR Antibody (C-term) - Protocols

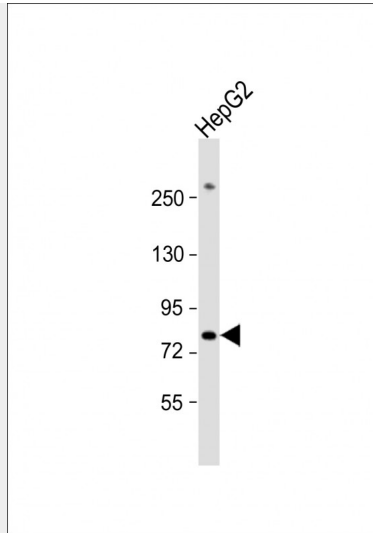
Provided below are standard protocols that you may find useful for product applications.

- [Western Blot](#)
- [Blocking Peptides](#)
- [Dot Blot](#)
- [Immunohistochemistry](#)
- [Immunofluorescence](#)
- [Immunoprecipitation](#)
- [Flow Cytometry](#)
- [Cell Culture](#)

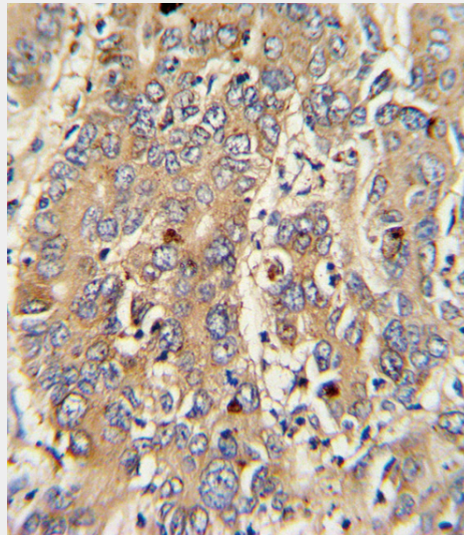
PIGR Antibody (C-term) - Images



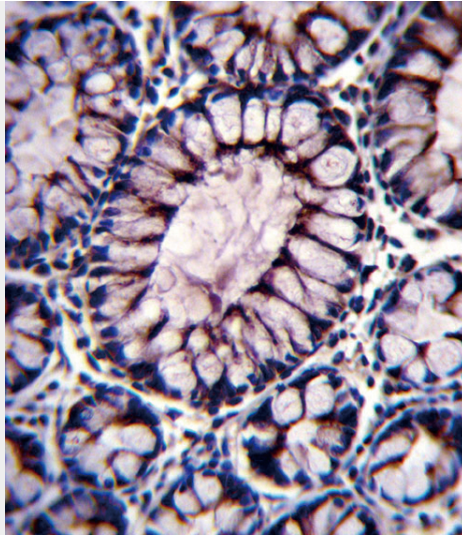
Confocal immunofluorescent analysis of PIGR Antibody (C-term) (Cat#AP8555b) with HepG2 cell followed by Alexa Fluor 488-conjugated goat anti-rabbit IgG (green). DAPI was used to stain the cell nuclear (blue).



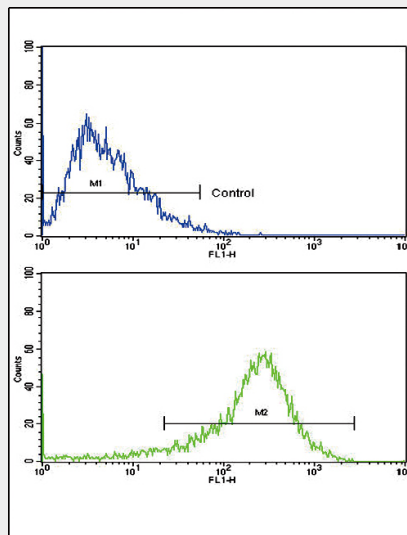
Anti-PIGR Antibody (C-term) at 1:1000 dilution + HepG2 whole cell lysate Lysates/proteins at 20 μ g per lane. Secondary Goat Anti-Rabbit IgG, (H+L), Peroxidase conjugated at 1/10000 dilution. Predicted band size : 83 kDa Blocking/Dilution buffer: 5% NFDM/TBST.



Formalin-fixed and paraffin-embedded human hepatocarcinoma with PIGR Antibody (C-term), which was peroxidase-conjugated to the secondary antibody, followed by DAB staining. This data demonstrates the use of this antibody for immunohistochemistry; clinical relevance has not been evaluated.



PIGR Antibody (C-term) (Cat. #AP8555b) immunohistochemistry analysis in formalin fixed and paraffin embedded human colon tissue followed by peroxidase conjugation of the secondary antibody and DAB staining. This data demonstrates the use of PIGR Antibody (C-term) for immunohistochemistry. Clinical relevance has not been evaluated.



Flow cytometric analysis of HepG2 cells using PIGR Antibody (C-term) (bottom histogram) compared to a negative control (top histogram). FITC-conjugated goat-anti-rabbit secondary antibodies were used for the analysis.

PIGR Antibody (C-term) - Background

PIGR binds polymeric IgA and IgM at the basolateral surface of epithelial cells. The complex is then transported across the cell to be secreted at the apical surface. During this process a cleavage occurs that separates the extracellular (known as the secretory component) from the transmembrane segment.

PIGR Antibody (C-term) - References

Ewing, R.M., et.al., Mol. Syst. Biol. 3, 89 (2007)
 Orzech, E., Cohen, S., et.al., J. Biol. Chem. 275 (20), 15207-15219 (2000)