

**LTA Antibody (Center)**  
**Affinity Purified Rabbit Polyclonal Antibody (Pab)**  
**Catalog # AP8509c**

**Specification**

---

**LTA Antibody (Center) - Product Information**

Application	<b>WB, IHC-P, FC,E</b>
Primary Accession	<a href="#">P01374</a>
Reactivity	<b>Human</b>
Host	<b>Rabbit</b>
Clonality	<b>Polyclonal</b>
Isotype	<b>Rabbit IgG</b>
Calculated MW	<b>22297</b>
Antigen Region	<b>46-72</b>

**LTA Antibody (Center) - Additional Information**

**Gene ID** 4049

**Other Names**

Lymphotoxin-alpha, LT-alpha, TNF-beta, Tumor necrosis factor ligand superfamily member 1, LTA, TNFB, TNFSF1

**Target/Specificity**

This LTA antibody is generated from rabbits immunized with a KLH conjugated synthetic peptide between 46-72 amino acids from the Central region of human LTA.

**Dilution**

WB~~1:1000  
IHC-P~~1:50~100  
FC~~1:10~50

**Format**

Purified polyclonal antibody supplied in PBS with 0.09% (W/V) sodium azide. This antibody is purified through a protein A column, followed by peptide affinity purification.

**Storage**

Maintain refrigerated at 2-8°C for up to 2 weeks. For long term storage store at -20°C in small aliquots to prevent freeze-thaw cycles.

**Precautions**

LTA Antibody (Center) is for research use only and not for use in diagnostic or therapeutic procedures.

**LTA Antibody (Center) - Protein Information**

**Name** LTA

**Synonyms** TNFB, TNFSF1

**Function** Cytokine that in its homotrimeric form binds to TNFRSF1A/TNFR1, TNFRSF1B/TNFB and TNFRSF14/HVEM (PubMed:[9462508](#)). In its heterotrimeric form with LTB binds to TNFRSF3/LTBR (PubMed:[24248355](#)). Lymphotoxin is produced by lymphocytes and is cytotoxic for a wide range of tumor cells in vitro and in vivo.

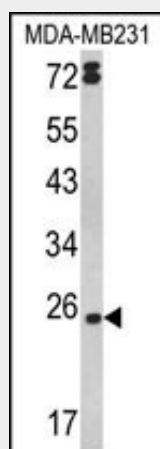
**Cellular Location**

Secreted. Membrane. Note=The homotrimer is secreted. The heterotrimer is membrane-associated

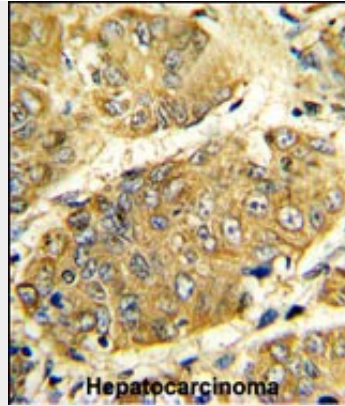
**LTA Antibody (Center) - Protocols**

Provided below are standard protocols that you may find useful for product applications.

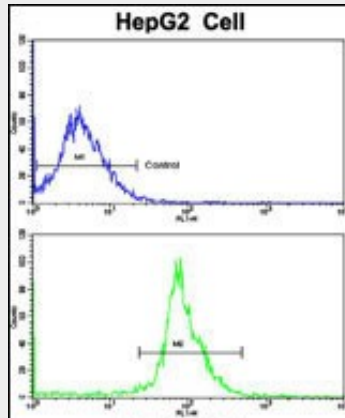
- [Western Blot](#)
- [Blocking Peptides](#)
- [Dot Blot](#)
- [Immunohistochemistry](#)
- [Immunofluorescence](#)
- [Immunoprecipitation](#)
- [Flow Cytometry](#)
- [Cell Culture](#)

**LTA Antibody (Center) - Images**

Western blot analysis of LTA Antibody (Center) (Cat. #AP8509c) in MDA-MB231 cell line lysates (35ug/lane). LTA (arrow) was detected using the purified Pab.



Formalin-fixed and paraffin-embedded human hepatocarcinoma reacted with LTA Antibody (Center), which was peroxidase-conjugated to the secondary antibody, followed by DAB staining. This data demonstrates the use of this antibody for immunohistochemistry; clinical relevance has not been evaluated.



Flow cytometric analysis of HepG2 cells using LTA Antibody (Center)(bottom histogram) compared to a negative control cell (top histogram). FITC-conjugated goat-anti-rabbit secondary antibodies were used for the analysis.

**LTA Antibody (Center) - Background**

LTA, a member of the tumor necrosis factor family, is a cytokine produced by lymphocytes. The protein is highly inducible, secreted, and forms heterotrimers with lymphotoxin-beta which anchor lymphotoxin-alpha to the cell surface. This protein also mediates a large variety of inflammatory, immunostimulatory, and antiviral responses, is involved in the formation of secondary lymphoid organs during development and plays a role in apoptosis.

**LTA Antibody (Center) - References**

Buonaguro,L., et.al., J. Virol. 66 (12), 7159-7167 (1992)  
 Fukushima,K., et.al., Arch. Biochem. Biophys. 304 (1), 144-153 (1993)