

GPD1 Antibody (N-term)
Affinity Purified Rabbit Polyclonal Antibody (Pab)
Catalog # AP8507a

Specification

GPD1 Antibody (N-term) - Product Information

Application	WB, IHC-P, FC,E
Primary Accession	P21695
Reactivity	Human
Host	Rabbit
Clonality	Polyclonal
Isotype	Rabbit IgG
Calculated MW	37568
Antigen Region	28-57

GPD1 Antibody (N-term) - Additional Information

Gene ID 2819

Other Names

Glycerol-3-phosphate dehydrogenase [NAD(+)], cytoplasmic, GPD-C, GPDH-C, GPD1

Target/Specificity

This GPD1 antibody is generated from rabbits immunized with a KLH conjugated synthetic peptide between 28-57 amino acids from the N-terminal region of human GPD1.

Dilution

WB~~1:1000
IHC-P~~1:50~100
FC~~1:10~50

Format

Purified polyclonal antibody supplied in PBS with 0.09% (W/V) sodium azide. This antibody is purified through a protein A column, followed by peptide affinity purification.

Storage

Maintain refrigerated at 2-8°C for up to 2 weeks. For long term storage store at -20°C in small aliquots to prevent freeze-thaw cycles.

Precautions

GPD1 Antibody (N-term) is for research use only and not for use in diagnostic or therapeutic procedures.

GPD1 Antibody (N-term) - Protein Information

Name GPD1 ([HGNC:4455](#))

Function Has glycerol-3-phosphate dehydrogenase activity.

Cellular Location

Cytoplasm.

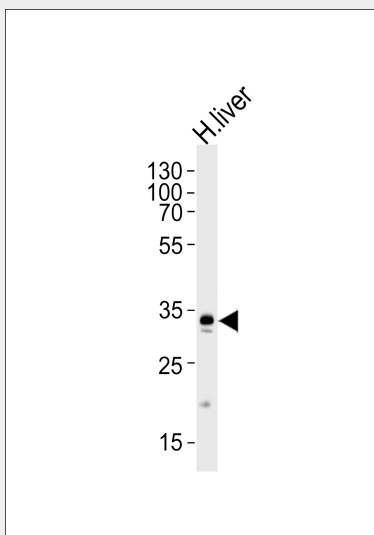
Tissue Location

Expressed in liver (at protein level).

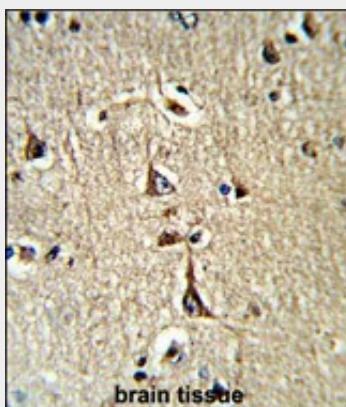
GPD1 Antibody (N-term) - Protocols

Provided below are standard protocols that you may find useful for product applications.

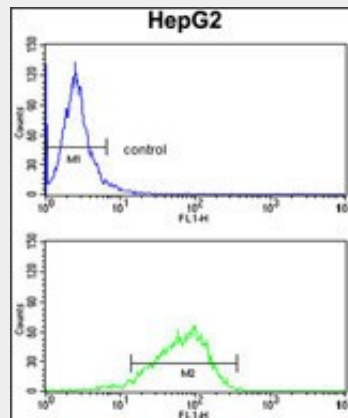
- [Western Blot](#)
- [Blocking Peptides](#)
- [Dot Blot](#)
- [Immunohistochemistry](#)
- [Immunofluorescence](#)
- [Immunoprecipitation](#)
- [Flow Cytometry](#)
- [Cell Culture](#)

GPD1 Antibody (N-term) - Images

Western blot analysis of lysate from human liver tissue lysate, using GPD1 Antibody (N-term)(Cat. #AP8507a). AP8507a was diluted at 1:1000 at each lane. A goat anti-rabbit IgG H&L(HRP) at 1:5000 dilution was used as the secondary antibody. Lysate at 35ug per lane.



Formalin-fixed and paraffin-embedded human brain tissue reacted with GPD1 Antibody (N-term), which was peroxidase-conjugated to the secondary antibody, followed by DAB staining. This data demonstrates the use of this antibody for immunohistochemistry; clinical relevance has not been evaluated.



GPD1 Antibody (N-term) (Cat.#AP8507a) flow cytometry analysis of HepG2 cells (bottom histogram) compared to a negative control cell (top histogram). FITC-conjugated goat-anti-rabbit secondary antibodies were used for the analysis.

GPD1 Antibody (N-term) - Background

GRB14, GPD1, and GDF8 as potential network collaborators in weight loss-induced improvements in insulin action in human skeletal muscle.

GPD1 Antibody (N-term) - References

- Krasnov,G.S., et.al., Mol. Biol. (Mosk.) 43 (2), 348-356 (2009)
- Park,J.J., et.al., Physiol. Genomics 27 (2), 114-121 (2006)