

**TPT1 Antibody (Center)**  
**Purified Rabbit Polyclonal Antibody (Pab)**  
**Catalog # AP8505c**

**Specification**

---

**TPT1 Antibody (Center) - Product Information**

Application	WB, IHC-P, FC,E
Primary Accession	<a href="#">P13693</a>
Other Accession	<a href="#">P43348</a> , <a href="#">P61288</a> , <a href="#">Q5E984</a>
Reactivity	Human
Predicted	Bovine, Pig, Rabbit
Host	Rabbit
Clonality	Polyclonal
Isotype	Rabbit IgG
Calculated MW	19595
Antigen Region	85-113

**TPT1 Antibody (Center) - Additional Information**

**Gene ID** 7178

**Other Names**

Translationally-controlled tumor protein, TCTP, Fortilin, Histamine-releasing factor, HRF, p23, TPT1

**Target/Specificity**

This TPT1 antibody is generated from rabbits immunized with a KLH conjugated synthetic peptide between 85-113 amino acids from the Central region of human TPT1.

**Dilution**

WB~~1:1000  
IHC-P~~1:10~50  
FC~~1:10~50

**Format**

Purified polyclonal antibody supplied in PBS with 0.09% (W/V) sodium azide. This antibody is prepared by Saturated Ammonium Sulfate (SAS) precipitation followed by dialysis against PBS.

**Storage**

Maintain refrigerated at 2-8°C for up to 2 weeks. For long term storage store at -20°C in small aliquots to prevent freeze-thaw cycles.

**Precautions**

TPT1 Antibody (Center) is for research use only and not for use in diagnostic or therapeutic procedures.

**TPT1 Antibody (Center) - Protein Information**

**Name** TPT1

**Function** Involved in calcium binding and microtubule stabilization (PubMed:[12167714](#), PubMed:[15162379](#), PubMed:[15958728](#)). Acts as a negative regulator of TSC2D1-mediated apoptosis, via interaction with and destabilization of TSC2D1 protein (PubMed:[18325344](#)).

#### Cellular Location

Cytoplasm.

#### Tissue Location

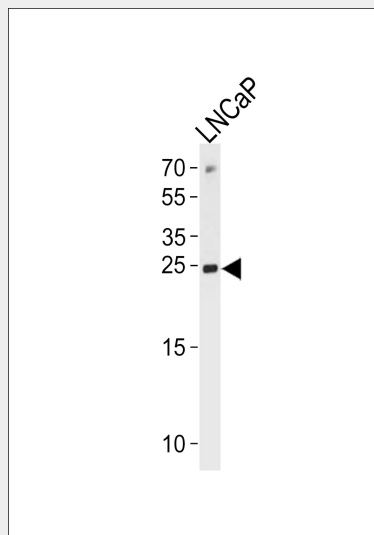
Found in several healthy and tumoral cells including erythrocytes, hepatocytes, macrophages, platelets, keratinocytes, erythroleukemia cells, gliomas, melanomas, hepatoblastomas, and lymphomas. It cannot be detected in kidney and renal cell carcinoma (RCC). Expressed in placenta and prostate

### TPT1 Antibody (Center) - Protocols

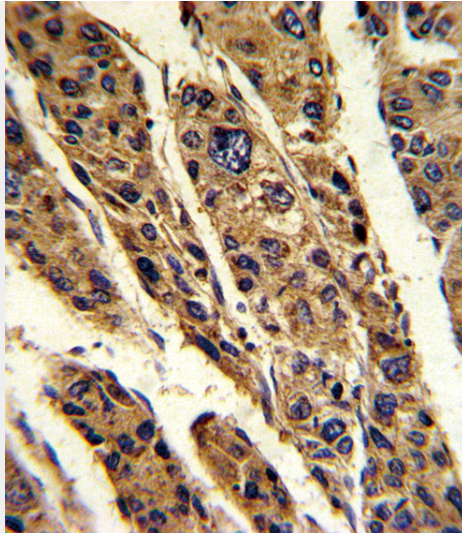
Provided below are standard protocols that you may find useful for product applications.

- [Western Blot](#)
- [Blocking Peptides](#)
- [Dot Blot](#)
- [Immunohistochemistry](#)
- [Immunofluorescence](#)
- [Immunoprecipitation](#)
- [Flow Cytometry](#)
- [Cell Culture](#)

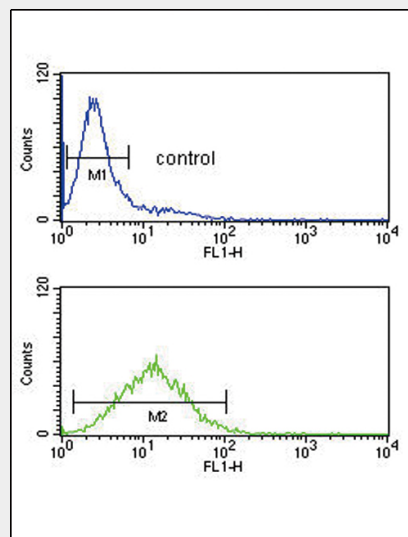
### TPT1 Antibody (Center) - Images



TPT1 Antibody (Center) (Cat. #AP8505c) western blot analysis in LNCaP cell line lysates (35ug/lane). This demonstrates the TPT1 antibody detected the TPT1 protein (arrow).



Formalin-fixed and paraffin-embedded human hepatocarcinoma reacted with TPT1 Antibody (Center), which was peroxidase-conjugated to the secondary antibody, followed by DAB staining. This data demonstrates the use of this antibody for immunohistochemistry; clinical relevance has not been evaluated.



TPT1 Antibody (Center) (Cat. #AP8505c) flow cytometric analysis of Jurkat cells (bottom histogram) compared to a negative control cell (top histogram). FITC-conjugated goat-anti-rabbit secondary antibodies were used for the analysis.

### **TPT1 Antibody (Center) - Background**

TPT1 is involved in calcium binding and microtubule stabilization.

### **TPT1 Antibody (Center) - References**

- Choi, S., et al., PLoS ONE 4 (6), E5732 (2009)
- Sanchez, J.C., et al., Electrophoresis 18 (1), 150-155 (1997)