

**PP1C gamma (PPP1CC) Antibody (N-term)**  
**Purified Rabbit Polyclonal Antibody (Pab)**  
**Catalog # AP8432a****Specification**

---

**PP1C gamma (PPP1CC) Antibody (N-term) - Product Information**

Application	WB,E
Primary Accession	<a href="#">P36873</a>
Reactivity	Human, Mouse
Host	Rabbit
Clonality	Polyclonal
Isotype	Rabbit IgG
Calculated MW	36984
Antigen Region	1-30

**PP1C gamma (PPP1CC) Antibody (N-term) - Additional Information****Gene ID** 5501**Other Names**

Serine/threonine-protein phosphatase PP1-gamma catalytic subunit, PP-1G, Protein phosphatase 1C catalytic subunit, PPP1CC

**Target/Specificity**

This PP1C gamma (PPP1CC) antibody is generated from rabbits immunized with a KLH conjugated synthetic peptide between 1-30 amino acids from the N-terminal region of human PP1C gamma (PPP1CC).

**Dilution**

WB~~1:1000

**Format**

Purified polyclonal antibody supplied in PBS with 0.09% (W/V) sodium azide. This antibody is prepared by Saturated Ammonium Sulfate (SAS) precipitation followed by dialysis against PBS.

**Storage**

Maintain refrigerated at 2-8°C for up to 2 weeks. For long term storage store at -20°C in small aliquots to prevent freeze-thaw cycles.

**Precautions**

PP1C gamma (PPP1CC) Antibody (N-term) is for research use only and not for use in diagnostic or therapeutic procedures.

**PP1C gamma (PPP1CC) Antibody (N-term) - Protein Information****Name** PPP1CC**Function** Protein phosphatase that associates with over 200 regulatory proteins to form highly

specific holoenzymes which dephosphorylate hundreds of biological targets. Protein phosphatase 1 (PP1) is essential for cell division, and participates in the regulation of glycogen metabolism, muscle contractility and protein synthesis. Dephosphorylates RPS6KB1. Involved in regulation of ionic conductances and long-term synaptic plasticity. May play an important role in dephosphorylating substrates such as the postsynaptic density- associated Ca(2+)/calmodulin dependent protein kinase II. Component of the PTW/PP1 phosphatase complex, which plays a role in the control of chromatin structure and cell cycle progression during the transition from mitosis into interphase. In balance with CSNK1D and CSNK1E, determines the circadian period length, through the regulation of the speed and rhythmicity of PER1 and PER2 phosphorylation. May dephosphorylate CSNK1D and CSNK1E. Dephosphorylates the 'Ser-418' residue of FOXP3 in regulatory T-cells (Treg) from patients with rheumatoid arthritis, thereby inactivating FOXP3 and rendering Treg cells functionally defective (PubMed:[23396208](#)).

#### Cellular Location

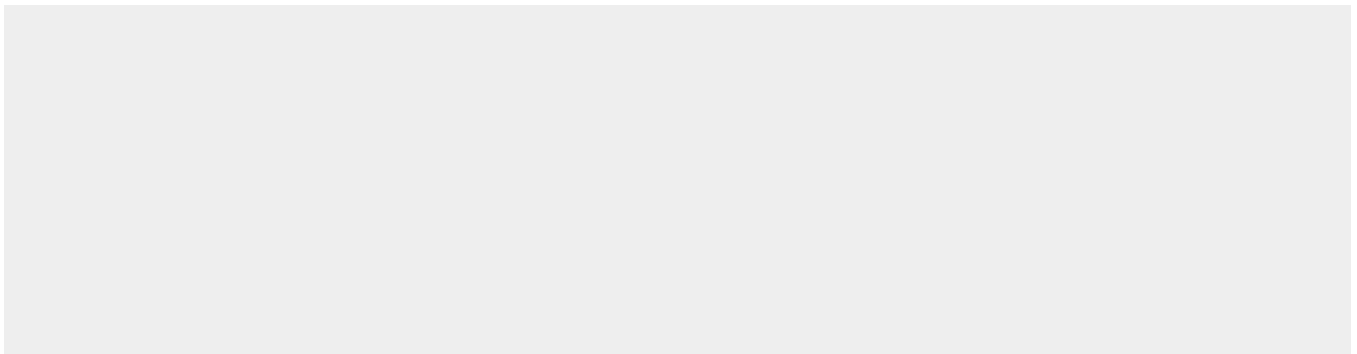
Cytoplasm. Nucleus. Nucleus, nucleolus. Nucleus, nucleoplasm. Nucleus speckle. Chromosome, centromere, kinetochore. Cleavage furrow. Midbody Mitochondrion. Cytoplasm, cytoskeleton, microtubule organizing center Note=Colocalizes with SPZ1 in the nucleus (By similarity). Colocalizes with URI1 at mitochondrion (PubMed:17936702). Rapidly exchanges between the nucleolar, nucleoplasmic and cytoplasmic compartments (PubMed:11739654). Highly mobile in cells and can be relocalized through interaction with targeting subunits (PubMed:17965019). In the presence of PPP1R8 relocalizes from the nucleolus to nuclear speckles (PubMed:11739654). Shows a dynamic targeting to specific sites throughout the cell cycle (PubMed:12529430). Highly concentrated in nucleoli of interphase cells and localizes at kinetochores early in mitosis (PubMed:12529430). Relocalization to chromosome-containing regions occurs at the transition from early to late anaphase (PubMed:12529430). Also accumulates at the cleavage furrow and midbody by telophase (PubMed:12529430). Colocalizes with DYNLT4 in the microtubule organizing center (MTOC) (PubMed:23789093) {ECO:0000250|UniProtKB:P63087, ECO:0000269|PubMed:11739654, ECO:0000269|PubMed:12529430, ECO:0000269|PubMed:17936702, ECO:0000269|PubMed:17965019, ECO:0000269|PubMed:23789093}

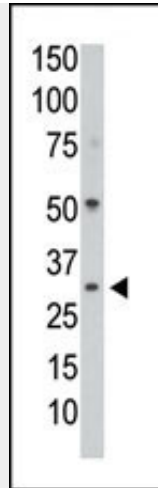
#### PP1C gamma (PPP1CC) Antibody (N-term) - Protocols

Provided below are standard protocols that you may find useful for product applications.

- [Western Blot](#)
- [Blocking Peptides](#)
- [Dot Blot](#)
- [Immunohistochemistry](#)
- [Immunofluorescence](#)
- [Immunoprecipitation](#)
- [Flow Cytometry](#)
- [Cell Culture](#)

#### PP1C gamma (PPP1CC) Antibody (N-term) - Images





The anti-PPP1CC Pab (Cat. #AP8432a) is used in Western blot to detect PPP1CC in mouse colon tissue lysate.

### **PP1C gamma (PPP1CC) Antibody (N-term) - Background**

Protein phosphatase-1 (PP1) is 1 of 4 major serine/threonine-specific protein phosphatases involved in the dephosphorylation of a variety of proteins. These enzymes work in opposition to the protein kinases to control the level of phosphorylation. Protein phosphatase (PP1) is essential for cell division, and it participates in the regulation of glycogen metabolism, muscle contractility and protein synthesis, as well as in regulation of ionic conductances and long-term synaptic plasticity. PP1 has 3 catalytic subunits, designated alpha (PPP1CA), beta (PPP1CB), and gamma (PPP1CC).