

Fructose 6 Phosphate Kinase Antibody (N-term)
Purified Rabbit Polyclonal Antibody (Pab)
Catalog # AP8137a**Specification**

Fructose 6 Phosphate Kinase Antibody (N-term) - Product Information

Application	WB, IHC-P,E
Primary Accession	P08237
Reactivity	Human
Host	Rabbit
Clonality	Polyclonal
Isotype	Rabbit IgG
Antigen Region	122-151

Fructose 6 Phosphate Kinase Antibody (N-term) - Additional Information**Gene ID** 5213**Other Names**

ATP-dependent 6-phosphofructokinase, muscle type {ECO:0000255|HAMAP-Rule:MF_03184}, ATP-PFK {ECO:0000255|HAMAP-Rule:MF_03184}, PFK-M, 27111 {ECO:0000255|HAMAP-Rule:MF_03184}, 6-phosphofructokinase type A, Phosphofructo-1-kinase isozyme A, PFK-A, Phosphohexokinase {ECO:0000255|HAMAP-Rule:MF_03184}, PFKM, PFKX

Target/Specificity

This Fructose 6 Phosphate Kinase antibody is generated from rabbits immunized with a KLH conjugated synthetic peptide between 122-151 amino acids from the N-terminal region of human Fructose 6 Phosphate Kinase.

Dilution

WB~~1:1000
IHC-P~~1:50~100

Format

Purified polyclonal antibody supplied in PBS with 0.09% (W/V) sodium azide. This antibody is prepared by Saturated Ammonium Sulfate (SAS) precipitation followed by dialysis against PBS.

Storage

Maintain refrigerated at 2-8°C for up to 2 weeks. For long term storage store at -20°C in small aliquots to prevent freeze-thaw cycles.

Precautions

Fructose 6 Phosphate Kinase Antibody (N-term) is for research use only and not for use in diagnostic or therapeutic procedures.

Fructose 6 Phosphate Kinase Antibody (N-term) - Protein Information**Name** PFKM

Synonyms PFKX

Function Catalyzes the phosphorylation of D-fructose 6-phosphate to fructose 1,6-bisphosphate by ATP, the first committing step of glycolysis.

Cellular Location

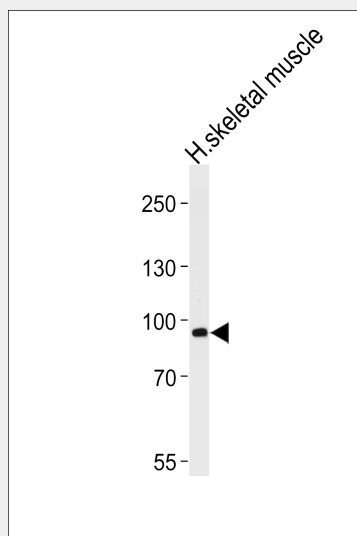
Cytoplasm {ECO:0000255|HAMAP-Rule:MF_03184}.

Fructose 6 Phosphate Kinase Antibody (N-term) - Protocols

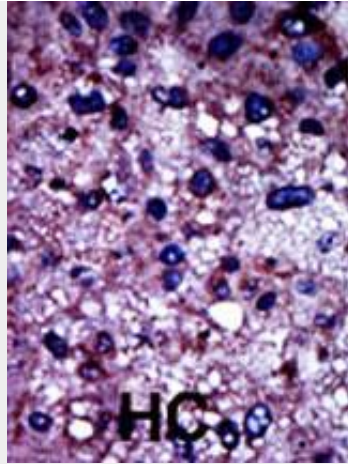
Provided below are standard protocols that you may find useful for product applications.

- [Western Blot](#)
- [Blocking Peptides](#)
- [Dot Blot](#)
- [Immunohistochemistry](#)
- [Immunofluorescence](#)
- [Immunoprecipitation](#)
- [Flow Cytometry](#)
- [Cell Culture](#)

Fructose 6 Phosphate Kinase Antibody (N-term) - Images



Western blot analysis of lysate from human skeletal muscle tissue lysate, using PFKM Antibody [S137] (Cat. #AP8137a). AP8137a was diluted at 1:1000 at each lane. A goat anti-rabbit IgG H&L(HRP) at 1:5000 dilution was used as the secondary antibody. Lysate at 35ug per lane.



Formalin-fixed and paraffin-embedded human cancer tissue reacted with the primary antibody, which was peroxidase-conjugated to the secondary antibody, followed by DAB staining. This data demonstrates the use of this antibody for immunohistochemistry; clinical relevance has not been evaluated. BC = breast carcinoma; HC = hepatocarcinoma.

Fructose 6 Phosphate Kinase Antibody (N-term) - Background

Phosphofructokinase catalyzes the irreversible conversion of fructose 6 phosphate to fructose 1,6 bisphosphate. Mammalian PFK is a complex isozyme consisting of 3 subunits: muscle (M), liver (L), and platelet (P). Only M type PFK isozyme is expressed in mature muscle, while erythrocytes contain both L and M subunits. Defects in PFKM are the cause of glycogen storage disease type 7 (GSD7), also known as Tarui disease.

Fructose 6 Phosphate Kinase Antibody (N-term) - References

- Howard, T.D., et al., Genomics 34(1):122-127 (1996).
- Vasconcelos, O., et al., Proc. Natl. Acad. Sci. U.S.A. 92(22):10322-10326 (1995).
- Raben, N., et al., J. Biol. Chem. 268(7):4963-4967 (1993).
- Yamasaki, T., et al., Gene 104(2):277-282 (1991).
- Sharma, P.M., et al., J. Biol. Chem. 265(16):9006-9010 (1990).